

Продажа - Апартамент - Benalmadena

1.975.000€

Benalmadena

Апартамент

Коммунальные: 3,468 EUR / год

ИБИ: 1,241 EUR / год

Мусор: 60 EUR / год



3



3



181 m2

This stunning duplex penthouse in the iconic Puerto Deportivo Benalmádena offers an exceptional blend of luxury, comfort, and tranquility. Spread over two levels, the home enjoys spectacular, undisturbed views — to the east, the vibrant marina unfolds in all its beauty, while to the west, the sun sets gracefully over the beach. Every detail has been designed with quality in mind, from the elegant finishes to the thoughtfully planned spaces. Three bedrooms and three bathrooms ensure comfort for family and guests alike, with the master suite enjoying its own private top-floor retreat complete with balcony, bathroom, and even a sauna. With three terraces in total, you can follow the sun throughout the day, from morning coffee by the port to evening sunsets over the Mediterranean. The residence is part of an exclusive building equipped with a lift and a heated rooftop pool that can be enjoyed all year round. Despite its central location in the heart of the marina, the apartment remains remarkably peaceful, offering a peaceful home above the lively port below. The apartment comes with a private garage space with direct elevator access. Puerto Deportivo Benalmádena is known for its unique architecture, picturesque harbor, and vibrant atmosphere. From your doorstep, you'll find a wide selection of restaurants, cafés, and golden beaches just moments away. Whether you're seeking relaxation, fine dining, or a lively social scene, everything the Costa del Sol is famous for is right here — all within walking distance of your new home in the marina.

Расположение

- ✓ Первая линия пляжа
- ✓ На побережье
- ✓ Рядом с портом
- ✓ Рядом с магазинами
- ✓ Рядом с морем
- ✓ Рядом с городом
- ✓ Близко к школам

Климат-контроль

- ✓ Кондиционер
- ✓ Полы с подогревом в ванной

меры безопасности

- ✓ Электрические жалюзи
- ✓ Домофон

ОРИЕНТАЦИЯ

- ✓ Юго-запад

ВИД

- ✓ Море
- ✓ Порт
- ✓ Панорамный
- ✓ Город

Парковка

- ✓ Приватная

Состояние

- ✓ Отличное

Особенности

- ✓ Крытая терраса
- ✓ Лифт
- ✓ Встроенные шкафы
- ✓ Рядом с транспортом
- ✓ Приватная терраса
- ✓ Сауна
- ✓ Ванная комната
- ✓ Мраморные полы
- ✓ Оптическое волокно

Категория

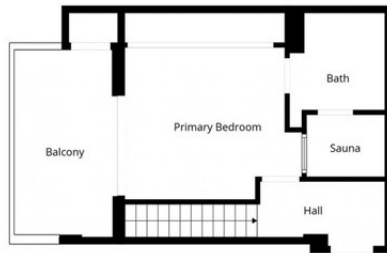
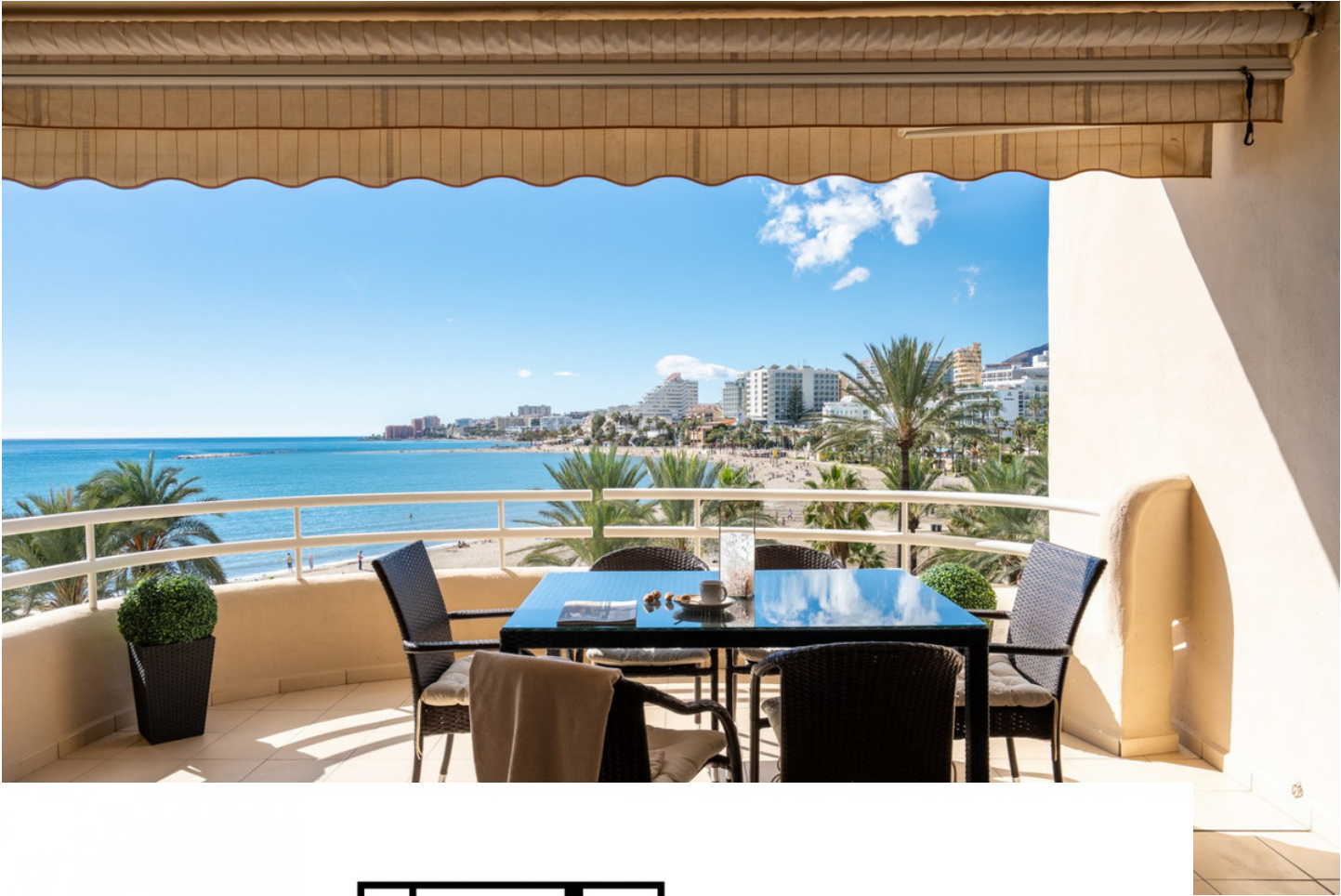
- ✓ Первая линия пляжа
- ✓ Элитная

бассейн

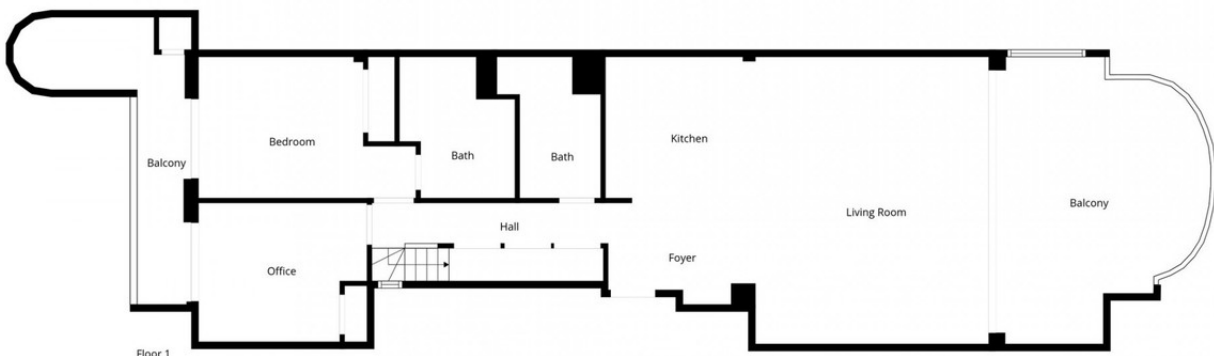
- ✓ Общий
- ✓ С подогревом

Мебель

- ✓ По желанию



Floor 2



Floor 1

Floor Plan Created By Cubicasa App. Measurements Deemed Highly Reliable But Not Guaranteed.





































