

Продажа - Дом - Riviera del Sol

690.000€

Riviera del Sol

Дом



3



2.5



134 m2



134 m2

A brand new three bedroom semi-detached house with fabulous sea views from both levels. Turn key and offered for sale fully furnished to a high standard. The furnishings are a wonderful balance of modern and Boho design. Located in Alya, a gated community in Riviera del Sol. The community has its own gym, co-working and swimming pool all with sea views! Situated only a five minutes drive to Max Beach Restaurant, numerous padel and sports clubs and the boardwalk. The house has great connectivity to both La Cala de Mijas via Calanova Golf and Riviera del Sol. The ground floor has a cosy feel with elegant Cortizo windows leading to the front and manicured garden. Step inside to an open plan arrangement with a spectacular kitchen / lounge. The fully equipped kitchen features a stunning quartz island as a centre piece. Upstairs the first floor hosts the impressive main bedroom with built in wardrobes, electric blind, ensuite bathroom and sea views from the bed. A further two double bedrooms and a bathroom. The outdoor space wraps around the house providing sun at various times of the day ideal for alfresco dining in the warm climate. There is a splendid covered terrace for morning coffee. Private parking behind secure electric car gates for up to three cars. Riviera del Sol, Mijas Costa offers a good variety of nearby amenities, several golf courses and well respected local and international schools all within a short drive. The motorway (AP7) also provides convenient access to Marbella, Malaga and the airport. Energy Rating: A & B

Расположение

- ✓ Урбанизация

Состояние

- ✓ Отличное
- ✓ Новое строительство

бассейн

- ✓ Общий

Климат-контроль

- ✓ Кондиционер
- ✓ Кондиционер холодного воздуха

ВИД

- ✓ Море
- ✓ Сад

Особенности

- ✓ Крытая терраса
- ✓ Встроенные шкафы
- ✓ Приватная терраса
- ✓ Тренажерный зал
- ✓ Ванная комната
- ✓ Оптическое волокно

Мебель

- ✓ Полностью меблированный

Кухня

- ✓ Полностью оборудованная

Сад

- ✓ Общественный
- ✓ Приватный

меры безопасности

- ✓ Огражденный комплекс
- ✓ Электрические жалюзи

Парковка

- ✓ Более чем один
- ✓ Приватная
- ✓ Зарядная станция для электромобилей

Коммунальные услуги

- ✓ Электричество
- ✓ Телефон

Категория

- ✓ Инвестиции
- ✓ Элитная
- ✓ Перепродажа















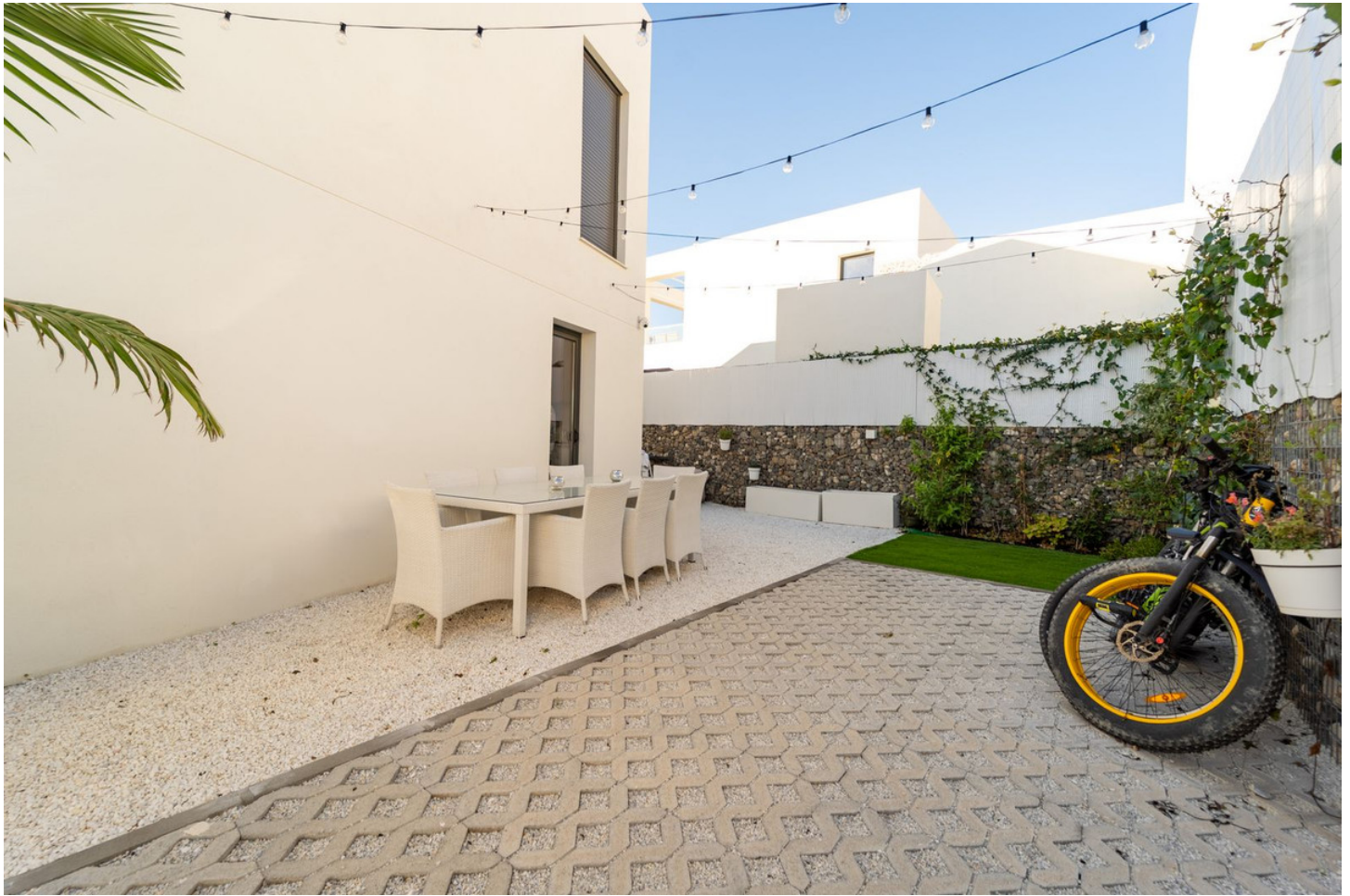






























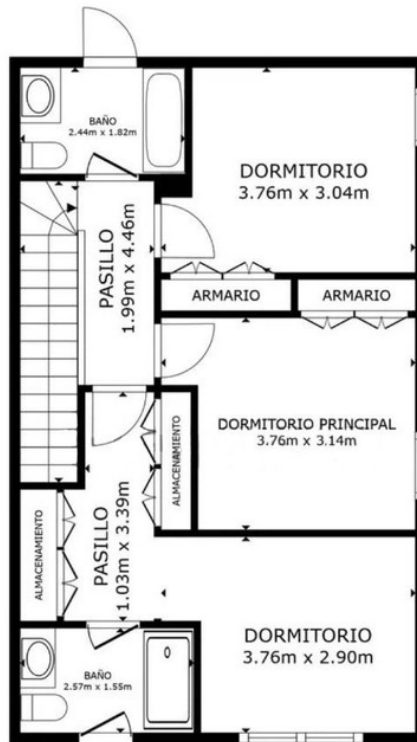








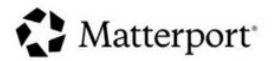




PLANTA 2

ÁREA INTERNA BRUTA
 PLANTA 1 47.6 m² PLANTA 2 57.6 m²
 ÁREAS EXCLUIDAS : TERRAZA 12.6 m²
 TOTAL : 105.2 m²

LOS TAMAÑOS Y LAS DIMENSIONES SON APROXIMADAS Y PUEDEN VARIAR EN ALGUNOS CASOS.



PLANTA 1

ÁREA INTERNA BRUTA
 PLANTA 1 47.6 m² PLANTA 2 57.6 m²
 ÁREAS EXCLUIDAS : TERRAZA 12.6 m²
 TOTAL : 105.2 m²

LOS TAMAÑOS Y LAS DIMENSIONES SON APROXIMADAS Y PUEDEN VARIAR EN ALGUNOS CASOS.

