

Продажа - Апартамент - Fuengirola
995.000€

Коммунальные: 5,004 EUR / год



Now available: newly completed luxury residence in Reserva del Higuierón – ready for immediate viewing This resale unit has just been completed and is move-in ready. Located in the most exclusive phase of the development, it offers the unique convenience of being only 500 meters from the beach. It is the only phase where all high-end amenities are housed within the same building. In future phases, residents will need to walk here to access shared facilities, making this property especially convenient and private. The home enjoys panoramic sea views from its elevated position, with a tiered architectural design that follows the natural slope of the land. Inside, you'll find a bright and open layout with floor-to-ceiling windows, offering a seamless connection between indoor and outdoor living. The interiors are finished with high-quality materials and a calm, modern design. For practicality and comfort, the property includes two large underground parking spaces and a private 25m² storage room, ideal for storing sports equipment, luggage, or seasonal items. Residents in this phase have direct internal access to: Infinity pool with solarium and bar Heated indoor pool Full spa with sauna, hammam, salt cave, Jacuzzi, and massage rooms Gym with Technogym equipment and frontal sea views Private cinema room Coworking space Landscaped gardens and quiet areas to relax The home also features smart and eco-efficient systems, including home automation, aerothermal energy, rainwater reuse, low-consumption fixtures, solar protection, and native plant landscaping that reduces water use. Additional services include a concierge available seven days a week, a one-year Platinum membership to the Reserva del Higuierón Sport Club, access to the private Owners Club, and a free community shuttle to local shopping areas. This is a rare opportunity to own a newly finished, never-lived-in resale unit in the most desirable part of Reserva del Higuierón — with every comfort and amenity located directly within your building. Contact us to arrange your private viewing.

Расположение

- ✓ Пригородная
- ✓ Рядом с магазинами
- ✓ Рядом с морем
- ✓ Рядом с городом
- ✓ Близко к школам
- ✓ Урбанизация

Климат-контроль

- ✓ Кондиционер
- ✓ Кондиционер холодного воздуха
- ✓ Кондиционер горячего воздуха

Кухня

- ✓ Полностью оборудованная

Коммунальные услуги

- ✓ Электричество

ОРИЕНТАЦИЯ

- ✓ Юго-восток

ВИД

- ✓ Море
- ✓ Панорамный

Сад

- ✓ Общественный

Категория

- ✓ Инвестиции
- ✓ Элитная
- ✓ Перепродажа

Состояние

- ✓ Отличное

Особенности

- ✓ Крытая терраса
- ✓ Лифт
- ✓ Встроенные шкафы
- ✓ Приватная терраса
- ✓ WiFi
- ✓ Сауна
- ✓ Падл теннис
- ✓ Ванная комната
- ✓ Джакузи
- ✓ Двойные стеклопакеты
- ✓ Круглосуточная ресепшн
- ✓ Оптическое волокно

меры безопасности

- ✓ Огражденный комплекс
- ✓ Электрические жалюзи
- ✓ Домофон
- ✓ Охрана 24 часа

бассейн

- ✓ Общий
- ✓ Закрытый
- ✓ С подогревом

Мебель

- ✓ Без мебели

Парковка

- ✓ Подземная



































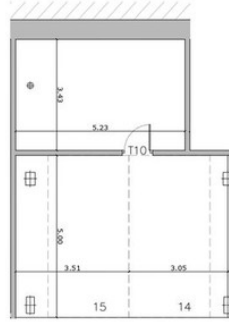




SUPERFICIE CONSTRUIDA VIVIENDA

SUPERFICIE CONSTRUIDA ANEXOS

BLOQUE 1	Unidad	Unidad	SUPERFICIE CONSTRUIDA VIVIENDA					TOTAL CONSTRUIDA (m ²)	SUPERFICIE CONSTRUIDA ANEXOS			TOTAL ANEXOS (m ²)	
			Vivienda (m ²)	Lavadero (m ²)	Terraza (m ²)	Patio/terrazo (m ²)	Porch/Lab. agua (m ²)		Aparcamientos	Trasteros	TOTAL ANEXOS (m ²)		
PLANTA SEGUNDA	2 ^a	DELFINO	84,59	3,04	36,05	0,00	0,00	123,68	Unidad	m ²	Unidad	m ²	
									14 (2)	15,28	10 (2)	22,61	50,19
									15 (2)	12,50			



APARCAMIENTOS Y TRASTERO



ESCALA: 1:100

Las superficies expresadas, al dimensionarse de pilares, la situación de vigas y cornisas de cerramiento, podrán experimentar leves variaciones durante la ejecución de la obra por exigencias técnicas, prácticas, constructivas. Los muestreos serán los reflejados en el memoria de cálculo. El responsable del presente documento es: Roger por las obras. Intervención de arquitecto técnico y controlador de calidad. Auto-grafico en blanco.