

## Продажа - Дом - Elviria

**2.999.000€**

**Elviria**

**Дом**



**4**



**4**



**342 m2**



**1058 m2**

Contemporary Villa with Sea Views Cumbres de Elviria · Marbella East There are homes that simply serve a purpose... and others that elevate the way you live. This villa has been conceived precisely for that: to offer space, privacy and a complete residential lifestyle in one of the most sought-after enclaves of Marbella East. Set on a private plot of 1,060 sqm, the property blends contemporary architecture, generous interior volumes and seamless connection with nature and the Mediterranean Sea. Construction & Level of Finish The villa has been fully custom-built, designed to detail and executed to the highest standards by demanding owners. This translates into: Above-standard materials. Upgraded construction solutions. High-end equipment and finishes. Bespoke architectural details. As a result, it stands as one of the most feature-rich villas in its area. Layout & Architecture The property is distributed over multiple levels connected by a private interior lift, running from the basement to the rooftop solarium. Features include: 4 spacious bedrooms. En-suite bathrooms. 2 additional guest toilets. Social Living Area The heart of the home is designed as an open-plan living environment comprising: Main living room. Integrated dining area. A wide, bright and highly functional social space enhanced by large panoramic windows with direct access to the garden and swimming pool. Private Wellness & Entertainment Area One of the property's most exclusive highlights is its private leisure level, designed as a residential resort experience: Private cinema room with panoramic screen. Surround audiovisual system. Star-ceiling lighting effect, recreating a night-sky cinematic atmosphere. Additionally, the villa offers: Fully equipped gym. Dance / fitness / wellness studio, adaptable for yoga, pilates or personal training. Outdoor Lifestyle Designed for year-round enjoyment: Private swimming pool. Garden. Pergolas. Covered terraces. Chill-out and outdoor dining areas. Views & Surroundings Open sea views. Natural green surroundings. Low-density residential environment. Maximum privacy. Golf & Strategic Location Close to renowned golf courses such as: Santa María Golf. Greenlife Golf. Cabopino Golf. Santa Clara Golf Marbella. And strategically located: Minutes from Elviria beaches. Short drive to Marbella centre. Easy access to Málaga Airport. Near shopping areas and international services.

**Расположение**

- ✓ Рядом с морем

**Климат-контроль**

- ✓ Кондиционер
- ✓ Кондиционер горячего воздуха
- ✓ Центральное отопление
- ✓ Полы с подогревом
- ✓ Полы с подогревом в ванной

**ОРИЕНТАЦИЯ**

- ✓ Юго-запад

**ВИД**

- ✓ Море
- ✓ Сельская местность
- ✓ Сад
- ✓ Бассейн
- ✓ Лес

**Состояние**

- ✓ Отличное

**Особенности**

- ✓ Крытая терраса
- ✓ Лифт
- ✓ Встроенные шкафы
- ✓ Рядом с транспортом
- ✓ Приватная терраса
- ✓ Солярий
- ✓ WiFi
- ✓ Тренажерный зал
- ✓ Игровая комната
- ✓ Кладовка
- ✓ Подсобное помещение
- ✓ Ванная комната
- ✓ Джакузи
- ✓ Барбекю
- ✓ Двойные стеклопакеты
- ✓ Умный дом
- ✓ Ресторан на территории
- ✓ Рядом с мечетью
- ✓ Подвал

**бассейн**

- ✓ Приватный

**Мебель**

- ✓ Частично меблированный

**Кухня**

- ✓ Полностью оборудованная

**Сад**

- ✓ Приватный

**меры безопасности**

- ✓ Электрические жалюзи
- ✓ Домофон
- ✓ Сигнализация
- ✓ Охрана 24 часа
- ✓ Сейф

**Парковка**

- ✓ Подземная
- ✓ Гараж

**Категория**

- ✓ Элитная

































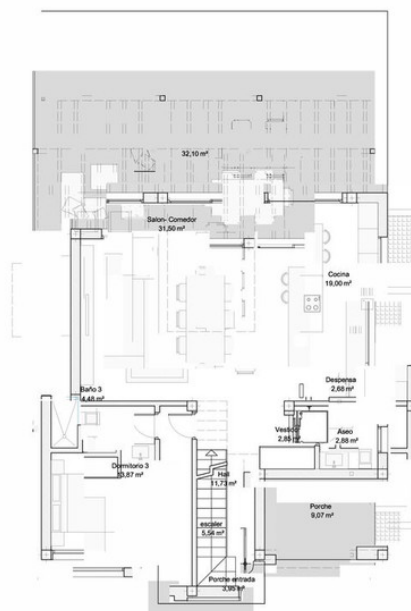
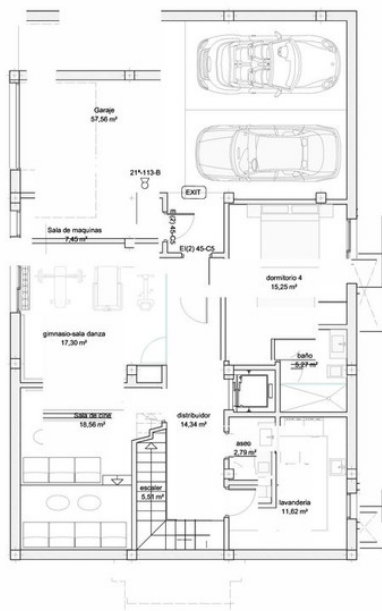








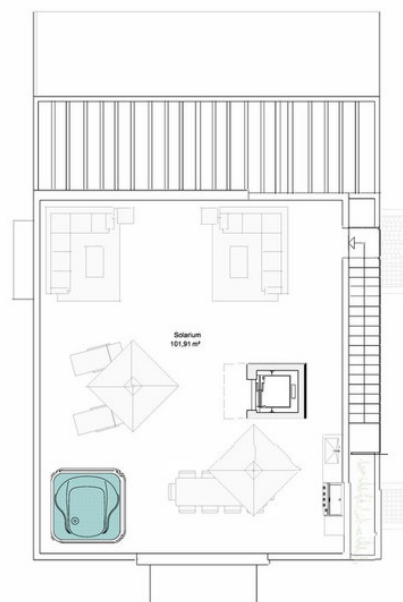
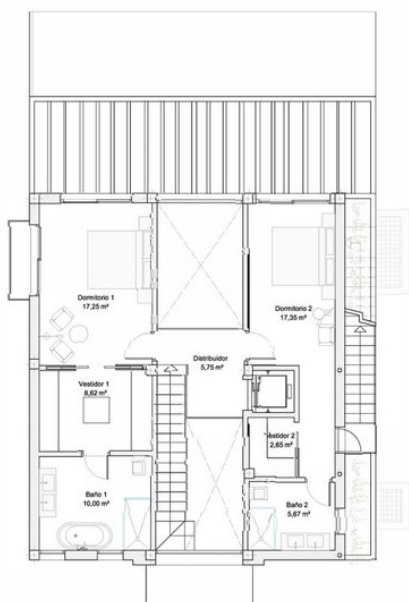




PLANO:  
PLANTA SOTANO - BAJA  
ESCALA: A1 1/50 A3 1/100

ESCALA: A3 1/50 A3 1/100

PM-01



PLANO:	PLANTA ALTA - CUBIERTA
ESCALA:	A1 1/50 A3 1/100

SCALE: A1 1/50, A3 1/100

ISSN: 0000-0000

PM-02



