

Продажа - Дом - La Cala Golf

1.899.500€

La Cala Golf

Дом



4



4



463 m²



1109 m²

This very rare and elegant 4-bedroom home, by the well-known, Marbella architect Jacobson/Gonzales is a perfect example of this architect's eye for details and light. Its location gives a lot of privacy and stunning panoramic views over the golf course and mountains beyond. The big wow factor is when you enter the property and are met by panoramic views through a huge window. This is stunning! To the left you have the kitchen and a big living room with lots of room for family and friends. Connected to this area you also have terraces with beautiful views. One of them leads to the garden and a lovely pool area. To the right from the hallway, you have two good sized bedrooms and a laundry area. To go downstairs you go to the panoramic window and follow it down to the 2 bedrooms below. Here you also find the huge master bedroom with its own terrace. Distances: Colegio Alemán de Málaga / Deutsche Schule Málaga in La Mairena - 7 minutes by car International school St. Anthony's College - 8 minutes by car Carrefour, Aldi, Lidl and Mercadona in La Cala - 7 minutes by car La Cala Golf Club - 300 m, walking distance Marbella Center - 20 minutes by car Elviria - 12 minutes by car Fuengirola center - 20 minutes by car La Cala Golf Resort offers: Three 18-hole golf courses plus a driving range and a 9-hole course Four restaurants Spa with baths, sauna and treatments Three padel courts One tennis court Gym Fitness center with about 40 classes per week (in Spanish or English)

ОРИЕНТАЦИЯ

- ✓ Север
- ✓ Юг
- ✓ Юго-запад
- ✓ Запад

ВИД

- ✓ Горы
- ✓ Гольф
- ✓ Сельская местность
- ✓ Панорамный
- ✓ Сад
- ✓ Бассейн
- ✓ Улица

Сад

- ✓ Приватный

Состояние

- ✓ Отличное

Особенности

- ✓ Крытая терраса
- ✓ Кладовка
- ✓ Подсобное помещение

Парковка

- ✓ С навесом

бассейн

- ✓ Приватный

Мебель

- ✓ Частично меблированный

Категория

- ✓ Гольф

Климат-контроль

- ✓ Кондиционер
- ✓ Камин

Кухня

- ✓ Полностью оборудованная

































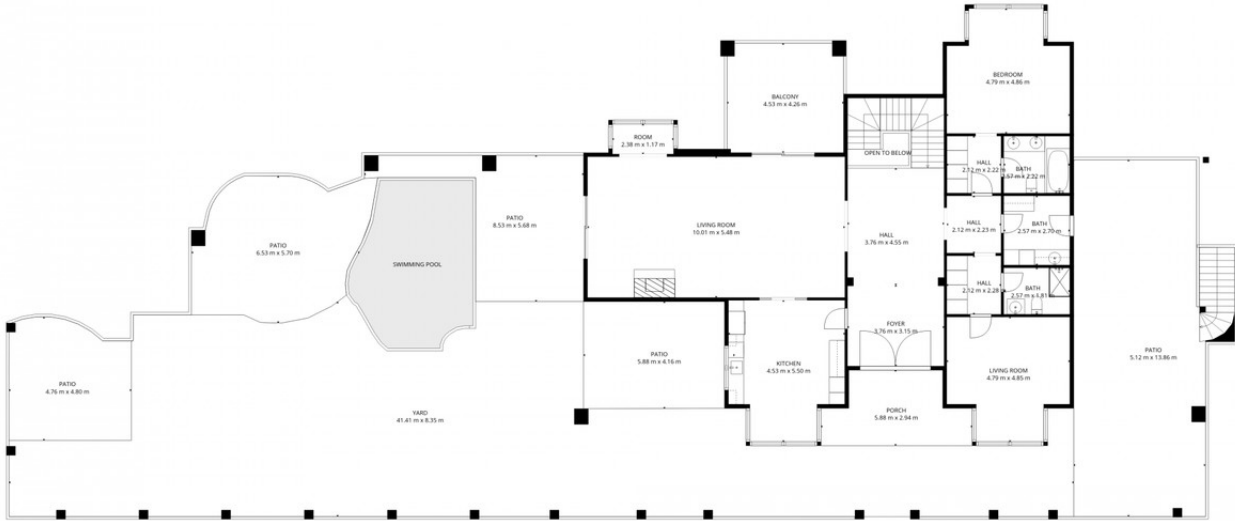






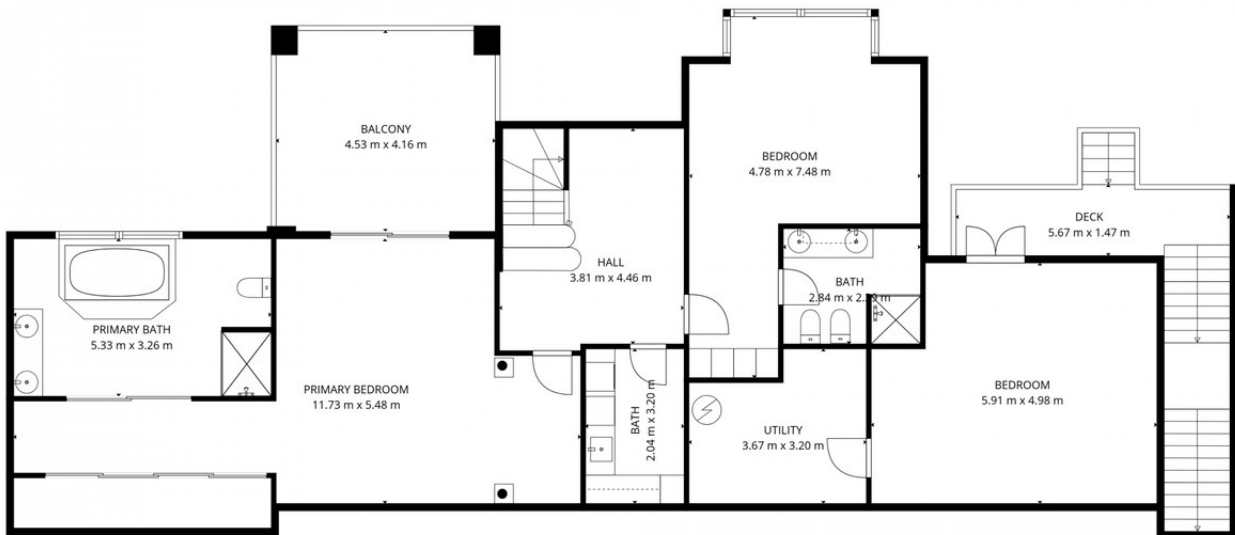






TOTAL: 334 m2
 Basement: 148 m2, 1st floor: 186 m2
 EXCLUDED AREAS: UTILITY: 10 m2, DECK: 17 m2, BALCONY: 38 m2,
 OPEN TO BELOW: 10 m2, PORCH: 14 m2, PATIO: 179 m2,
 WALLS: 24 m2

FLOOR PLAN CREATED BY CUBICASA APP. MEASUREMENTS DEEMED HIGHLY RELIABLE BUT NOT GUARANTEED.



TOTAL: 334 m2
 Basement: 148 m2, 1st floor: 186 m2
 EXCLUDED AREAS: UTILITY: 10 m2, DECK: 17 m2, BALCONY: 38 m2,
 OPEN TO BELOW: 10 m2, PORCH: 14 m2, PATIO: 179 m2,
 WALLS: 24 m2

FLOOR PLAN CREATED BY CUBICASA APP. MEASUREMENTS DEEMED HIGHLY RELIABLE BUT NOT GUARANTEED.