

Продажа - Дом - El Faro

1.895.000€

El Faro

Дом



5



4



453 m²



1081 m²

An exceptional opportunity to own a stylish new villa in the highly desirable area of El Faro, perfectly positioned close to all amenities, beaches, restaurants, and transport links. Scheduled for completion in 2026, this beautifully designed home enjoys an elevated position with breathtaking wide panoramic sea views that are truly second to none. The main residence offers 4 spacious bedrooms and 3 elegant bathrooms, thoughtfully distributed to provide both comfort and privacy. In addition, there is a separate self-contained 1-bedroom apartment, ideal for guests, rental income, staff accommodation, or multi-generational living. Designed with modern elegance and functionality in mind, the villa features a stylish contemporary interior, a fully fitted designer kitchen with premium Bosch appliances, and bright open-plan living spaces that seamlessly connect to the outdoor terraces. A wood-burning fireplace creates warmth and character in the main living area, while air conditioning throughout ensures year-round comfort. Outdoor living is one of this property's standout features, with large terraces, a spectacular rooftop terrace, and a private swimming pool, all perfectly oriented to enjoy the incredible sea views and Mediterranean lifestyle. The property also includes a garage for two cars, plus additional outside parking for one vehicle. This is a rare chance to secure a high-quality villa in a prime location, ideal as a permanent residence, holiday home, or investment.

Расположение

- ✓ Рядом с гольф-полем
- ✓ Рядом с магазинами
- ✓ Рядом с городом

Климат-контроль

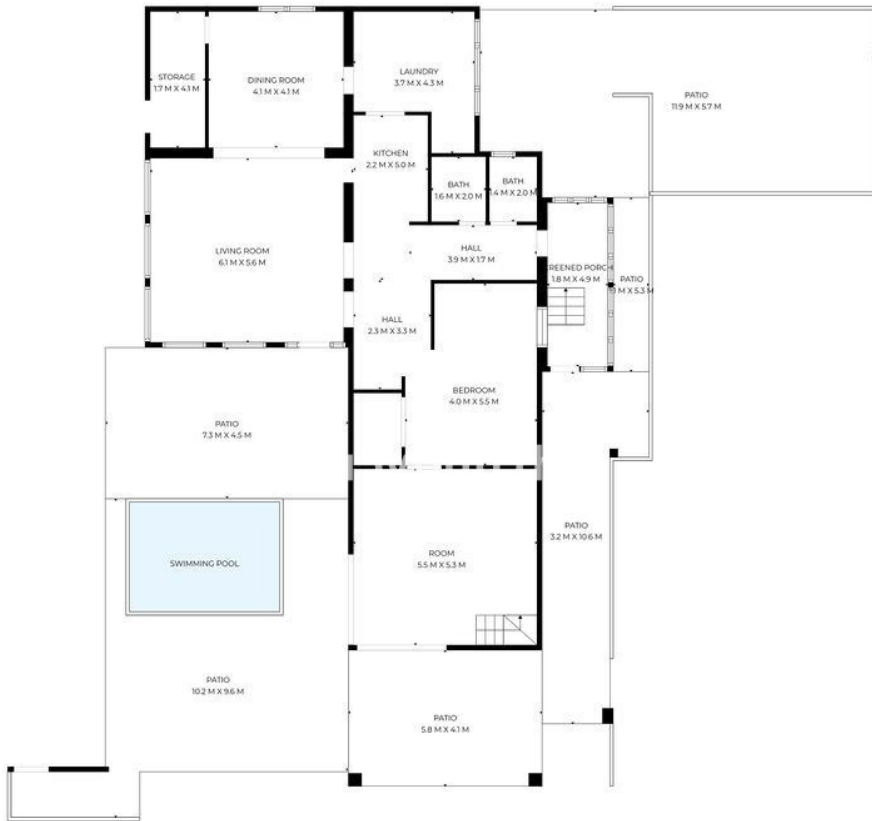
- ✓ Кондиционер

ВИД

- ✓ Море
- ✓ Панорамный

Особенности

- ✓ Рядом с транспортом



SIZES ARE APPROXIMATE, ACTUAL MAY VARY.





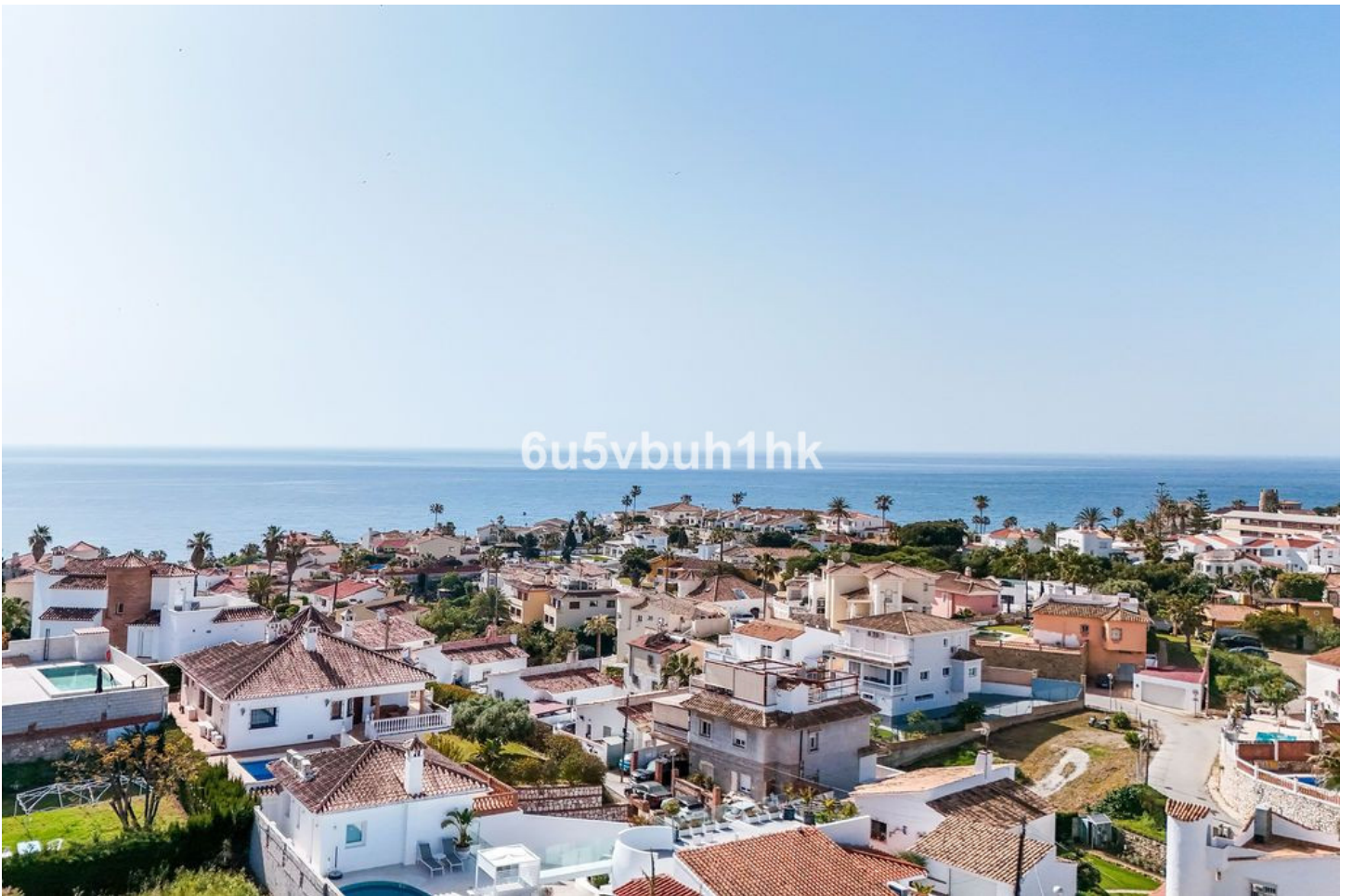




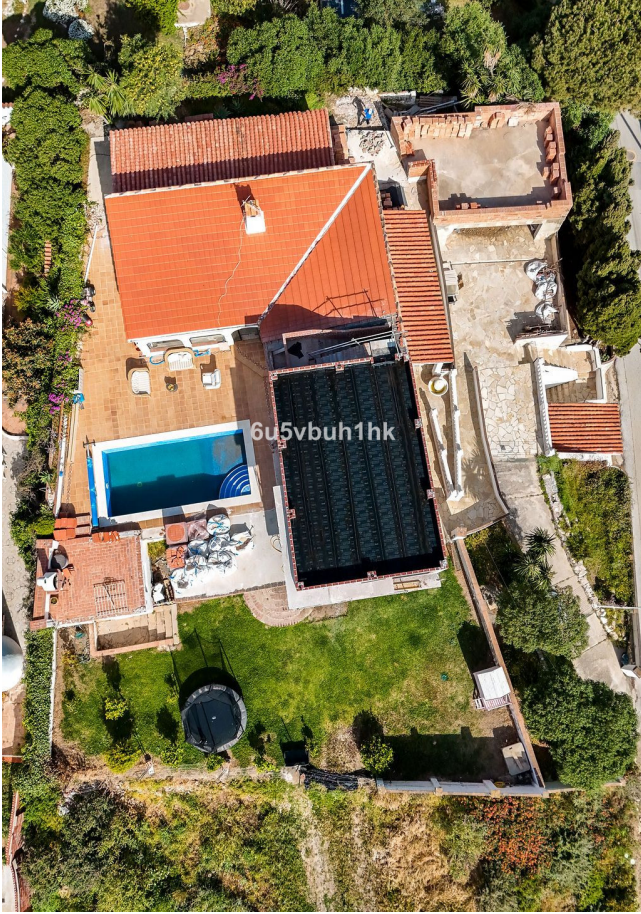
6u5vbuh1hk



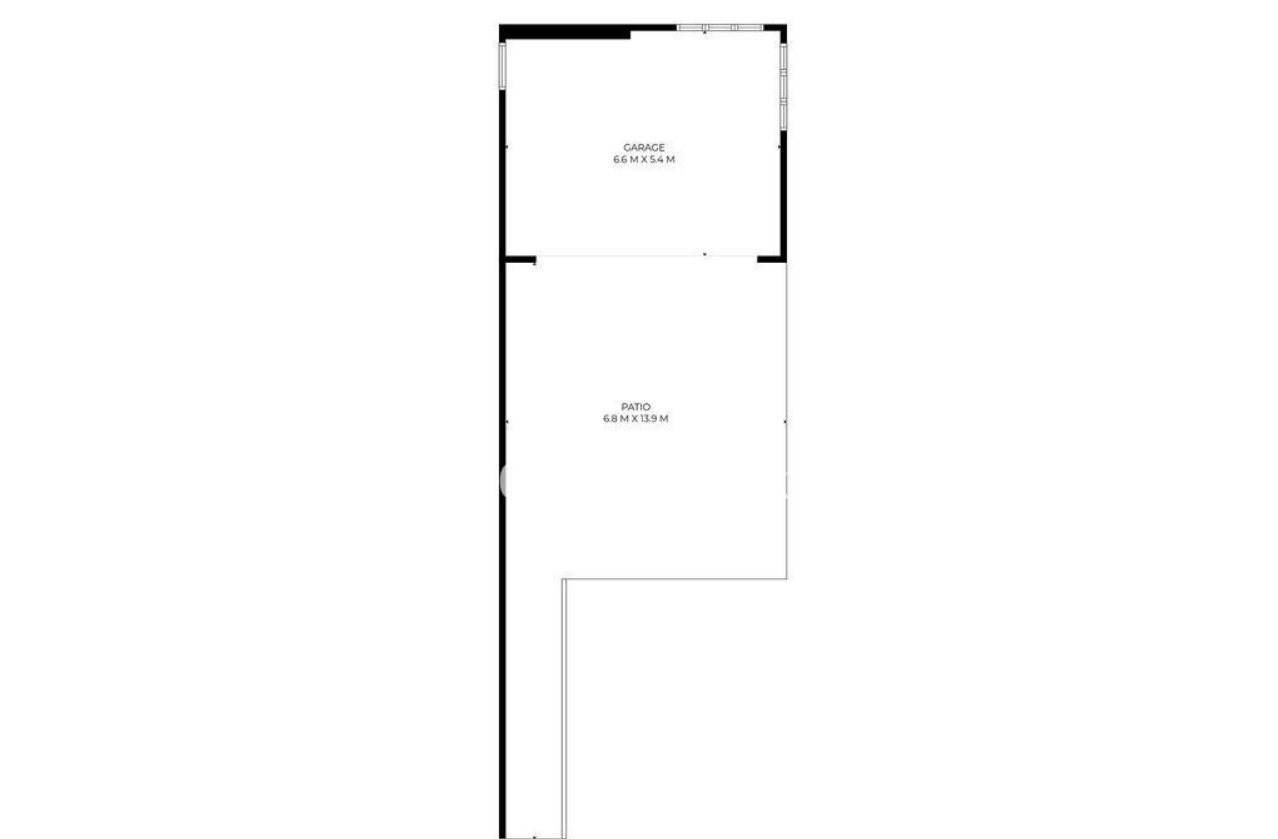
6u5vbuh1hk





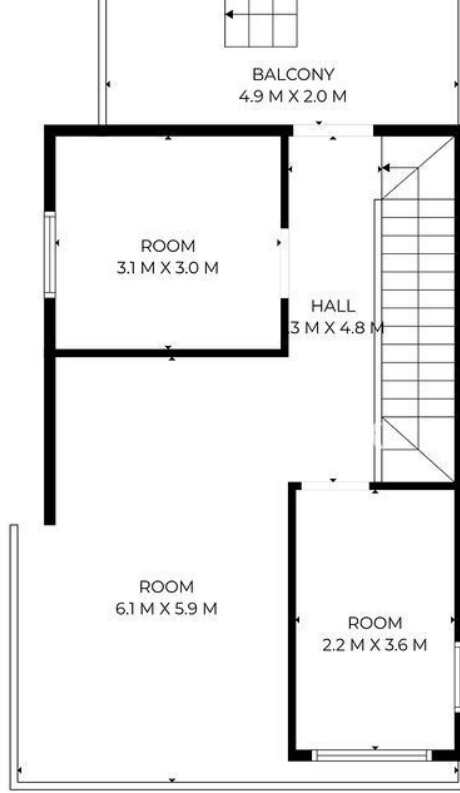


6u5vbuh1hk

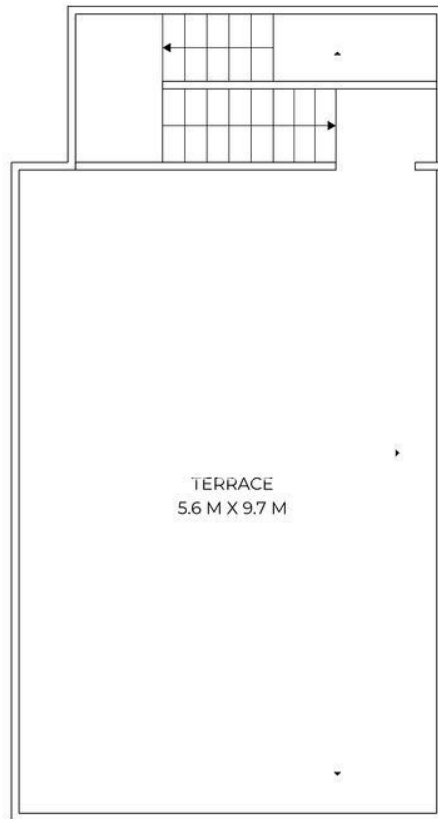


SIZES ARE APPROXIMATE, ACTUAL MAY VARY.





SIZES ARE APPROXIMATE, ACTUAL MAY VARY.



SIZES ARE APPROXIMATE, ACTUAL MAY VARY.

