

Продажа - Апартамент - Marbella

1.695.000€

Marbella

Апартамент



2



3



380 m2



380 m2

This elegant duplex penthouse, situated in Alzambra Vasari—one of the most privileged locations next to the roundabout leading to Puerto Banús—redefines the concept of Mediterranean comfort through spacious, light-filled and carefully designed spaces. Unlike Alzambra Resort, which is located further inland and offers lower-category properties, Vasari stands out for its strategic position and more exclusive surroundings. Spread over two floors, this penthouse offers a unique living experience where the connection between indoors and outdoors takes centre stage, thanks to its spacious terraces with a chill-out area and unobstructed views of lush gardens and the attractive communal swimming pool. The property stands out for its spaciousness—380 m² of floor space—and a layout designed to maximise privacy and functionality. On the main floor is the guest bedroom, alongside a spacious living room dominated by a cosy fireplace that opens onto the terraces, inviting you to enjoy the weather all year round. The fully equipped kitchen combines practicality and design, ideal for both everyday living and entertaining guests. The master bedroom is situated on the upper floor, offering a peaceful and light-filled atmosphere, complete with fitted wardrobes and an en-suite bathroom featuring meticulous detailing and underfloor heating, providing an extra touch of comfort. The finishes throughout the property exude quality and warmth: marble floors that reflect natural light and oak joinery on the doors and windows, lending a timeless elegance. The property forms part of a gated community with 24-hour security, surrounded by mature landscaped gardens, footpaths and artificial streams that create a serene and exclusive setting. The architecture and landscaping evoke a traditional Mediterranean style, where every stroll within the complex becomes an experience. From its terraces, there are unobstructed views of the swimming pool and the landscaped gardens, creating a relaxing atmosphere that invites you to unwind. This penthouse is an ideal choice both as a permanent home and as an investment, combining privacy, spaciousness and a truly privileged setting in the heart of Puerto Banús.

Климат-контроль

- ✓ Кондиционер
- ✓ Камин
- ✓ Полы с подогревом

ВИД

- ✓ Горы
- ✓ Панорамный

Особенности

- ✓ Лифт
- ✓ Приватная терраса
- ✓ Тренажерный зал
- ✓ Кладовка
- ✓ Мраморные полы
- ✓ Двойные стеклопакеты

Мебель

- ✓ Без мебели

Кухня

- ✓ Полностью оборудованная

Сад

- ✓ Приватный

Парковка

- ✓ Приватная













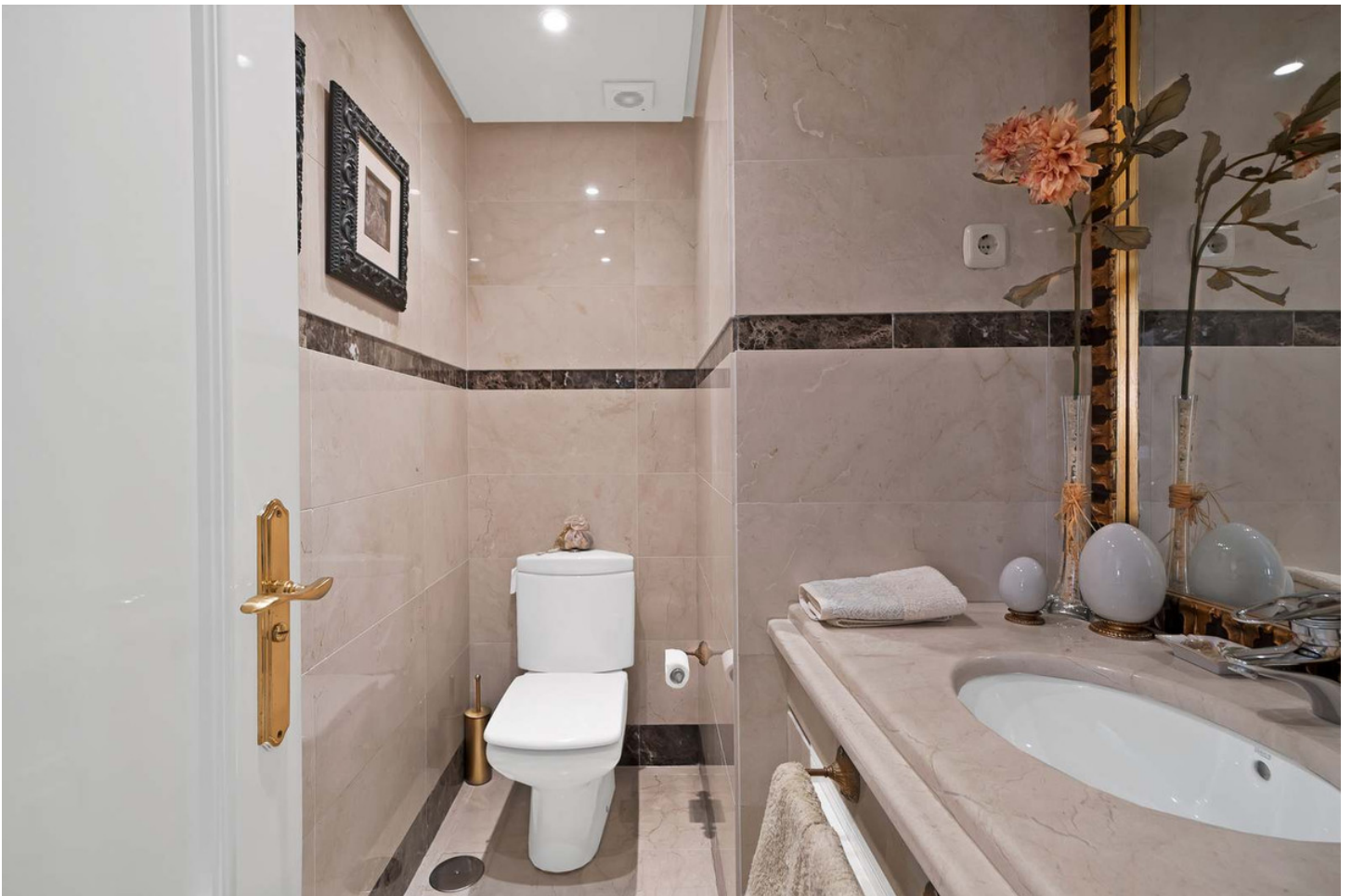












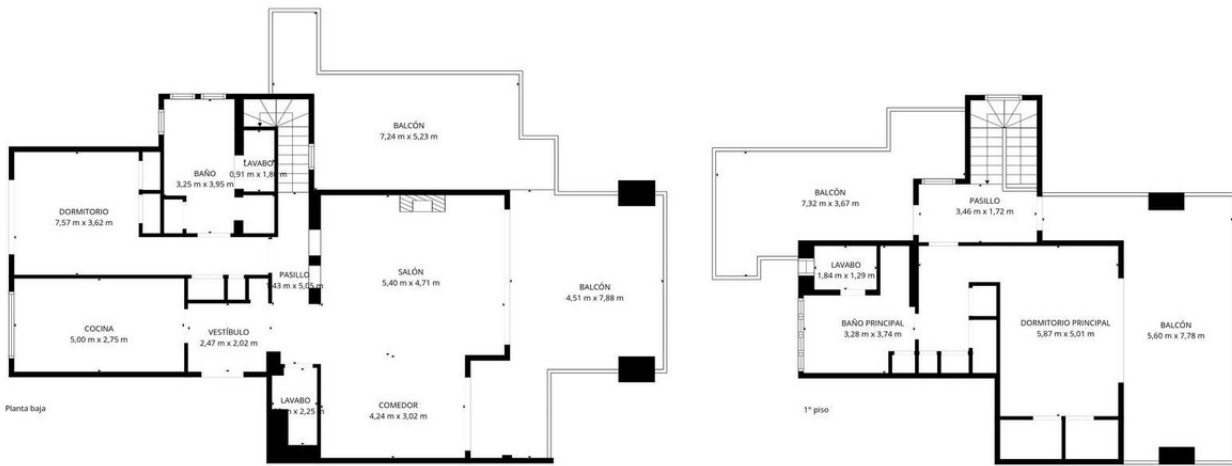
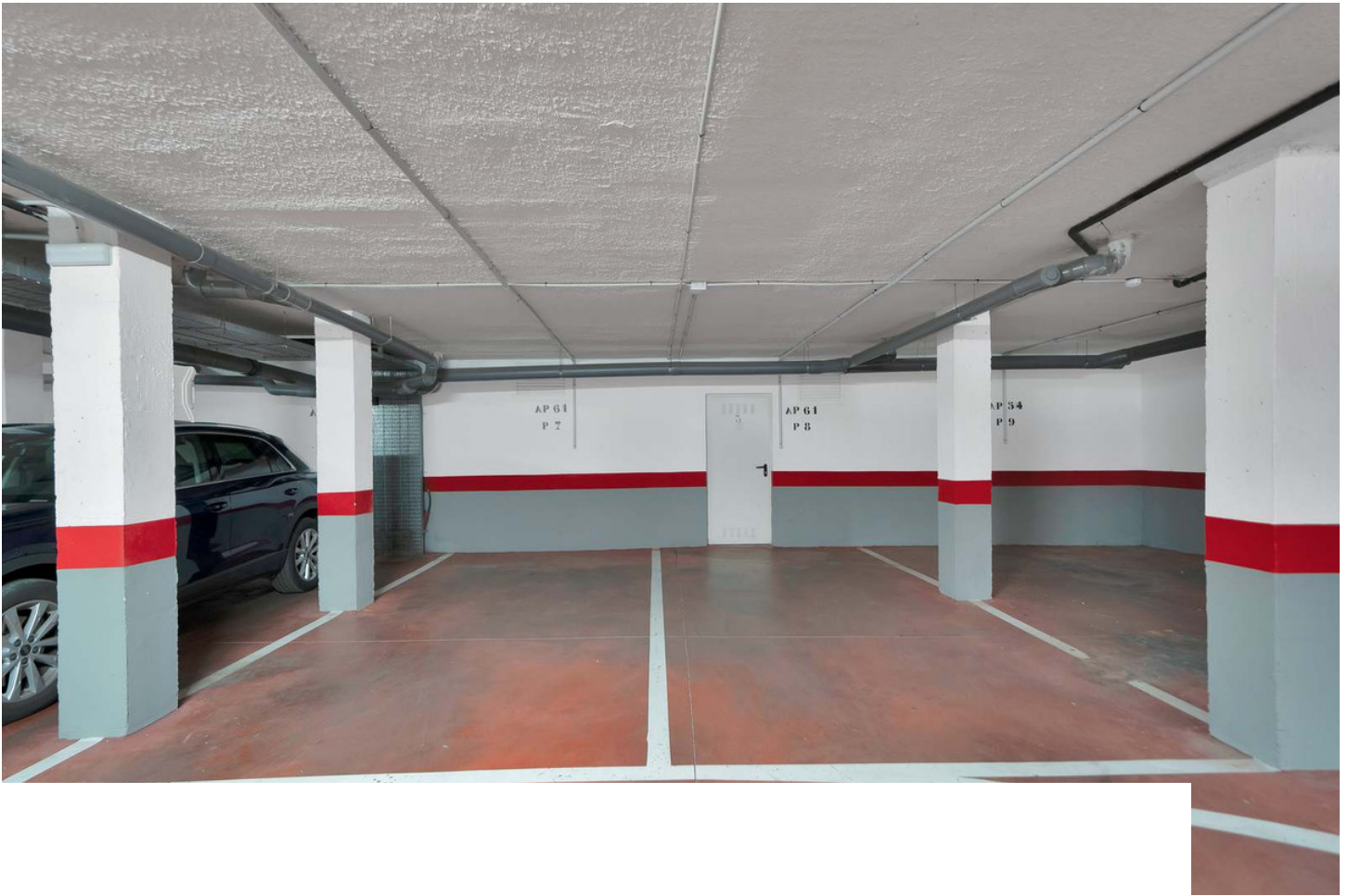






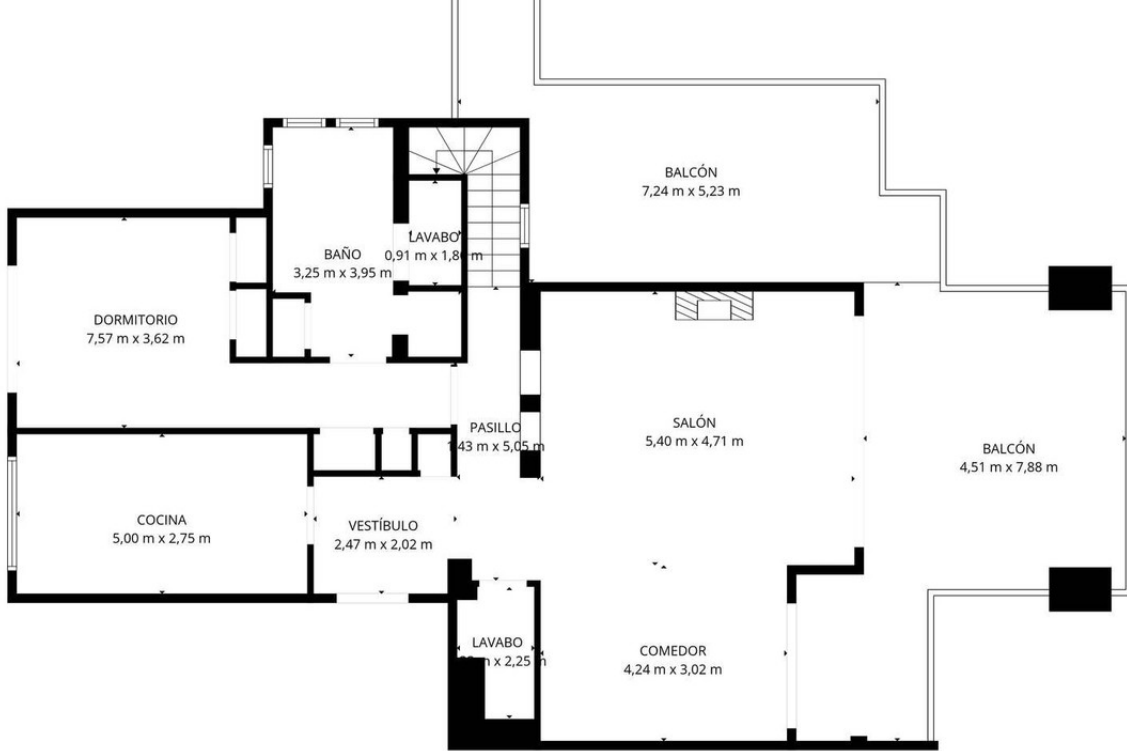






TOTAL: 160 m2
 Planta baja: 106 m2, 1º piso: 54 m2
 ÁREAS EXCLUIDAS: BALCÓN: 104 m2, MUROS: 15 m2

LAS MEDIDAS SON CALCULADAS UTILIZANDO LA TECNOLOGÍA CUBICASA. SON DE ALTA FIABILIDAD PERO NO GARANTIZADAS.

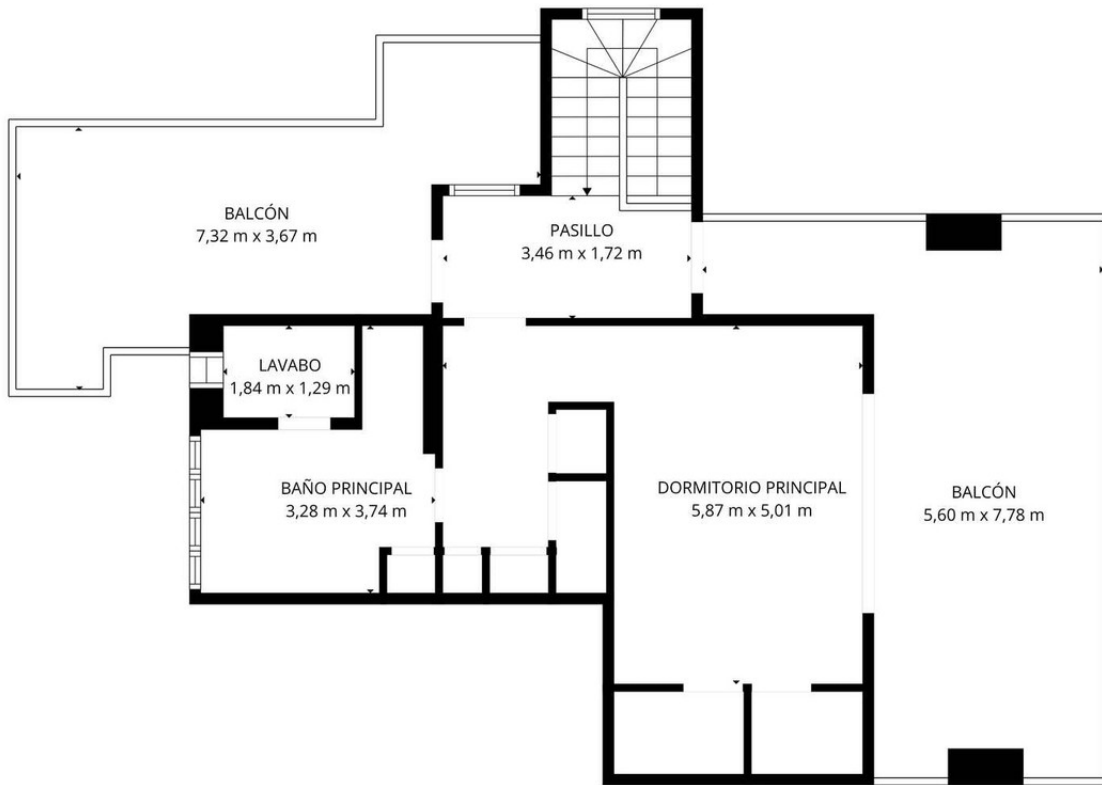


TOTAL: 160 m2

Planta baja: 106 m2, 1° piso: 54 m2

ÁREAS EXCLUIDAS: Balcón: 104 m2, MUROS: 15 m2

LAS MEDIDAS SON CALCULADAS UTILIZANDO LA TECNOLOGÍA CUBICASA, SON DE ALTA FIABILIDAD PERO NO GARANTIZADAS.



TOTAL: 160 m2

Planta baja: 106 m2, 1° piso: 54 m2

ÁREAS EXCLUIDAS: Balcón: 104 m2, MUROS: 15 m2

LAS MEDIDAS SON CALCULADAS UTILIZANDO LA TECNOLOGÍA CUBICASA, SON DE ALTA FIABILIDAD PERO NO GARANTIZADAS.