

Продажа - Апартамент - Estepona

349.000€

Estepona

Апартамент



2



2



80 m2

New to the market, this beautifully maintained apartment presents a fantastic opportunity to own a home in a highly sought-after location. Ideally situated within walking distance to the beach and seafront, and close to all local amenities, parks, shops, and restaurants, this property offers the perfect blend of comfort, convenience, and lifestyle. Located on the fourth floor with lift access, the apartment boasts a spacious and bright open-plan lounge and dining area, a fitted kitchen with separate utility room, two generous double bedrooms with fitted wardrobes, and two bathrooms including a family bathroom and ensuite shower room. Additional storage cupboards provide practical living space throughout. One of the standout features is the large private rooftop terrace, partly enclosed as a glassed-in sunroom — ideal for relaxing, entertaining, or enjoying the sunshine all year round. The property also benefits from a secure garage space, storage room, communal swimming pool, and beautifully maintained grassed outdoor areas within a very secure development. An excellent opportunity not to be missed — whether as a permanent residence, holiday home, or investment property. Early viewing is highly recommended.

Расположение

- ✓ Город
- ✓ Порт
- ✓ Рядом с портом
- ✓ Рядом с магазинами
- ✓ Рядом с морем
- ✓ Рядом с городом
- ✓ Близко к школам
- ✓ Рядом с портом

ВИД

- ✓ Город

Сад

- ✓ Общественный

Категория

- ✓ Выгодное предложение
- ✓ Первая линия пляжа
- ✓ Гольф
- ✓ Перепродажа

ОРИЕНТАЦИЯ

- ✓ Северо-восток

Особенности

- ✓ Лифт
- ✓ Встроенные шкафы
- ✓ Рядом с транспортом
- ✓ Приватная терраса
- ✓ Солярий
- ✓ Кладовка
- ✓ Подсобное помещение
- ✓ Ванная комната
- ✓ Мраморные полы

меры безопасности

- ✓ Огражденный комплекс
- ✓ Домофон

Состояние

- ✓ Хорошее

Мебель

- ✓ Полностью меблированный

Парковка

- ✓ Подземная
- ✓ Улица

бассейн

- ✓ Общий

Кухня

- ✓ Полностью оборудованная

Коммунальные услуги

- ✓ Электричество













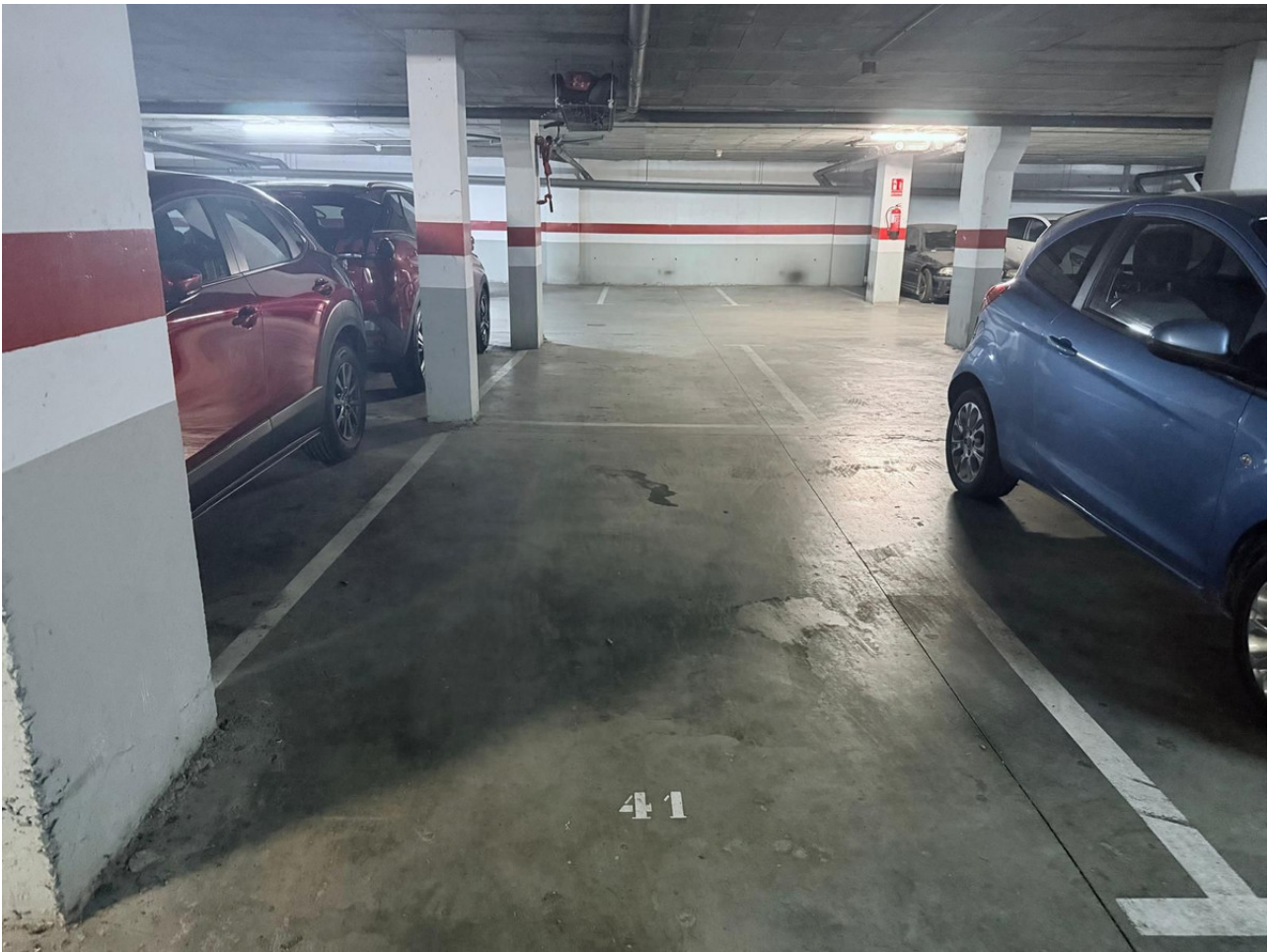


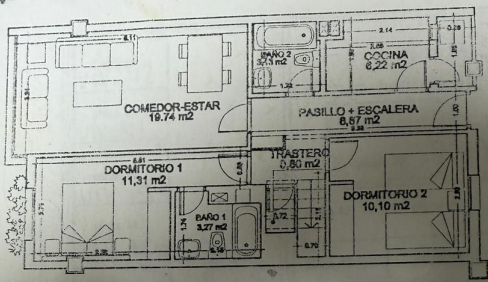




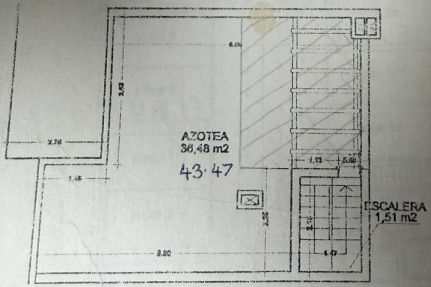








PLANTA DE ACCESO A VIVIENDA



PLANTA DE ACCESO A VIVIENDA