

Продажа - Дом - Coín

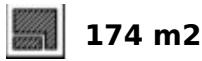
525.000€

Coín

Дом

Коммунальные: 252 EUR / год

ИБИ: 884 EUR / год



Set in a peaceful urbanisation on the outskirts of Coín, this detached villa enjoys beautiful open views across the surrounding countryside and the stunning Guadalhorce Valley, while offering excellent access to the coast, Marbella and Málaga airport. Built over three levels, the property offers spacious and versatile accommodation throughout. An impressive staircase leads to the main living area, where you will find a fully fitted kitchen, two double bedrooms with fitted wardrobes, a family bathroom, and a bright and welcoming living room-diner with fireplace. From here, doors open onto a covered terrace/conservatory, creating additional dining and seating areas that flow seamlessly out to the attractive garden and private swimming pool; ideal for both relaxing and entertaining. The upper floor is dedicated to the impressive master suite, featuring an en suite bathroom, dressing room, and two private terraces. One overlooks the garden and pool, while the other enjoys breathtaking panoramic views across the Guadalhorce Valley. On the ground floor, the villa benefits from a private gated parking area together with a utility room, music room/office and storeroom, offering excellent flexibility for storage, hobbies or working from home. The location is superb, combining tranquillity with convenience. The centre of Coín and the shopping centre are just 5 minutes away, the beaches of the Costa del Sol can be reached in 20 minutes, and Marbella, Málaga city and the international airport are all within a 30-minute drive.

Расположение

- ✓ Рядом с городом
- ✓ Рядом с лесом
- ✓ Урбанизация

Климат-контроль

- ✓ Кондиционер
- ✓ Камин

Кухня

- ✓ Полностью оборудованная

Категория

- ✓ Перепродажа

ОРИЕНТАЦИЯ

- ✓ Юг

ВИД

- ✓ Горы
- ✓ Сельская местность
- ✓ Сад
- ✓ Улица

Сад

- ✓ Приватный
- ✓ Простой в уходе

Состояние

- ✓ Отличное

Особенности

- ✓ Встроенные шкафы
- ✓ Рядом с транспортом
- ✓ Приватная терраса
- ✓ Солярий
- ✓ Кладовка
- ✓ Ванная комната

Парковка

- ✓ Открытая
- ✓ Улица
- ✓ Приватная

бассейн

- ✓ Приватный

Мебель

- ✓ По желанию

Коммунальные услуги

- ✓ Электричество
- ✓ Питьевая вода

























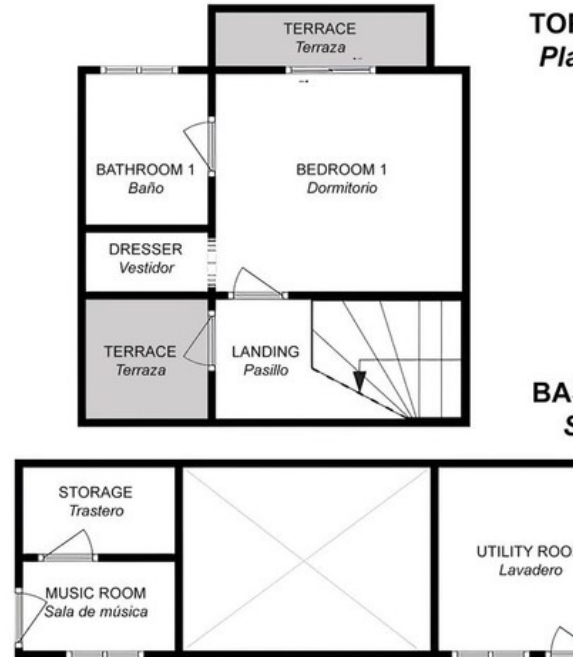








GROUND FLOOR
Planta Baja



This is a representation of the layout of the property and it is not to scale.
Esta es una representación de la distribución de la propiedad y no está a escala.