

Продажа - Апартамент - Benalmadena Costa

399.950€

Benalmadena Costa

Апартамент

Коммунальные: 1,320 EUR / год

ИБИ: 600 EUR / год

Мусор: 172 EUR / год



2



2



85 m2

EXCLUSIVE 2-BEDROOM APARTMENT WITH SEA VIEWS ON THE SECOND LINE OF THE BEACH. Discover this magnificent 2bedroom, 2bathroom (1 on suit) apartment located on the second line of the beach in the highly sought-after area of Benalmádena Costa. An ideal property both as a permanent residence, a holiday home, or an investment thanks to its excellent location and features. The property stands out for its location, spaciousness, and privacy, as well as a generous living room with a dining area that leads to a beautiful terrace with sea views. It also belongs to one of the most prestigious residential complexes in Benalmádena, known for its upkeep, maintenance, and excellent condition, allowing residents to enjoy a wonderful swimming pool with communal gardens. The property includes a large, enclosed underground garage, providing great convenience as well as additional storage space. Additionally, there is communal parking available, ideal for visitors of family and friends. A perfect opportunity to enjoy the quality of life on the Costa del Sol, with all services, shops, and transport links just a couple of minutes away. Don't miss the chance to be the first to view it! SHORT-TERM (TOURIST) RENTALS NOT PERMITTED Community fees: €110/month Property tax (IBI): €600/year Garbage collection: €172/year YOUR DREAM - OUR PASSION www.cristihomes.com

Расположение

- ✓ Рядом с гольф-полем

ВИД

- ✓ Горы
- ✓ Панорамный

меры безопасности

- ✓ Огражденный комплекс

ОРИЕНТАЦИЯ

- ✓ Юг
- ✓ Запад

Особенности

- ✓ Крытая терраса
- ✓ Лифт
- ✓ Встроенные шкафы
- ✓ Рядом с транспортом
- ✓ Приватная терраса
- ✓ Спутниковое телевидение
- ✓ Кладовка
- ✓ Ванная комната
- ✓ Мраморные полы
- ✓ Оптическое волокно

Парковка

- ✓ Подземная
- ✓ Гараж
- ✓ Открытая
- ✓ Приватная

бассейн

- ✓ Общий

Мебель

- ✓ Полностью меблированный

Климат-контроль

- ✓ Кондиционер
- ✓ Центральное отопление

Сад

- ✓ Приватный



















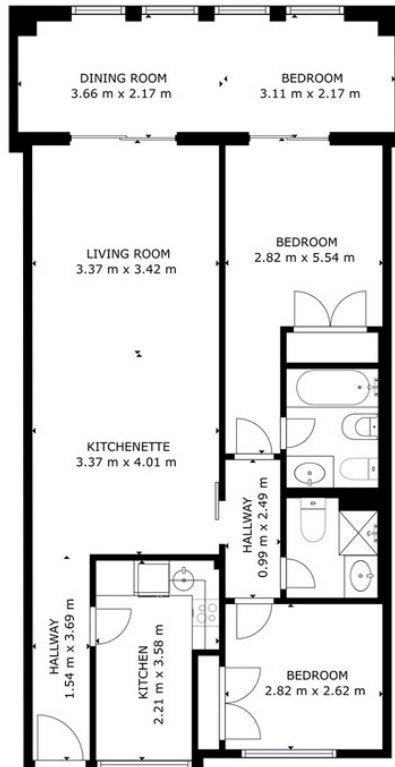












GROSS INTERNAL AREA
 FLOOR 1: 85.27 m²
 TOTAL: 85.27 m²
 SIZES AND DIMENSIONS ARE APPROXIMATE, ACTUAL MAY VARY.

