

Ref.-ID: MIBGR4417516

Benalmadena

Участок



16513 m2

Incredible land to build a hotel complex, aparthotel, also ideal as a sports hotel on an existing luxury base. This 16513m² plot has a total buildable area of more than 11500m². With an elegant restaurant and cafe, a paddle tennis club with 5 courts, a children's playground and an indoor playground and several rooms to host different events, it has successfully catered for multiple weddings in a single day. It is a privileged location, a stone's throw from the famous Torrequebrada golf course, designed by the renowned José Gancedo, and just a few minutes from the beautiful sandy beaches of the Costa del Sol. From the prestigious Torrequebrada area you can find in the center of Benalmádena Costa, 8 minutes by car, 20 minutes from Malaga airport and 25 minutes from the center of Marbella. Contact us to find out more about this profitable investment, you won't be disappointed.

Расположение

- ✓ Рядом с портом
- ✓ Рядом с магазинами
- ✓ Рядом с морем
- ✓ Близко к школам

ВИД

- ✓ Море
- ✓ Горы
- ✓ Гольф
- ✓ Сельская местность
- ✓ Панорамный

Особенности

- ✓ Падл теннис
- ✓ Ресторан на территории

Сад

- ✓ Приватный

Категория

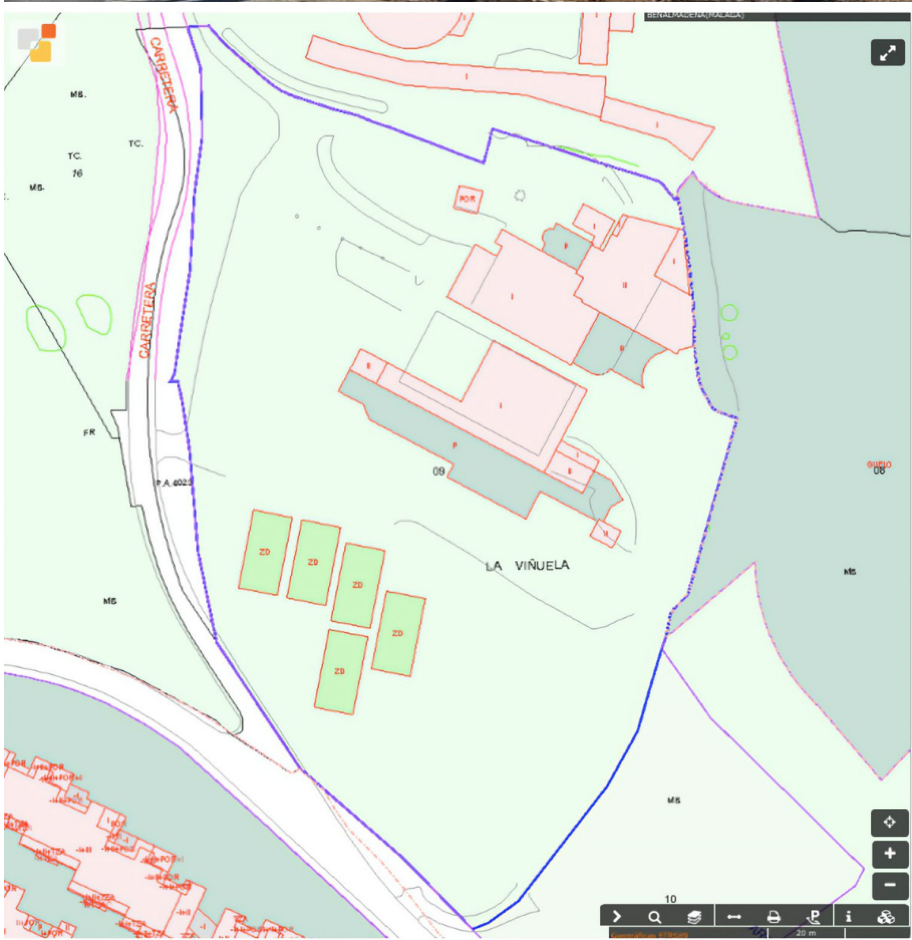
- ✓ Выгодное предложение
- ✓ Гольф
- ✓ Дома для отдыха

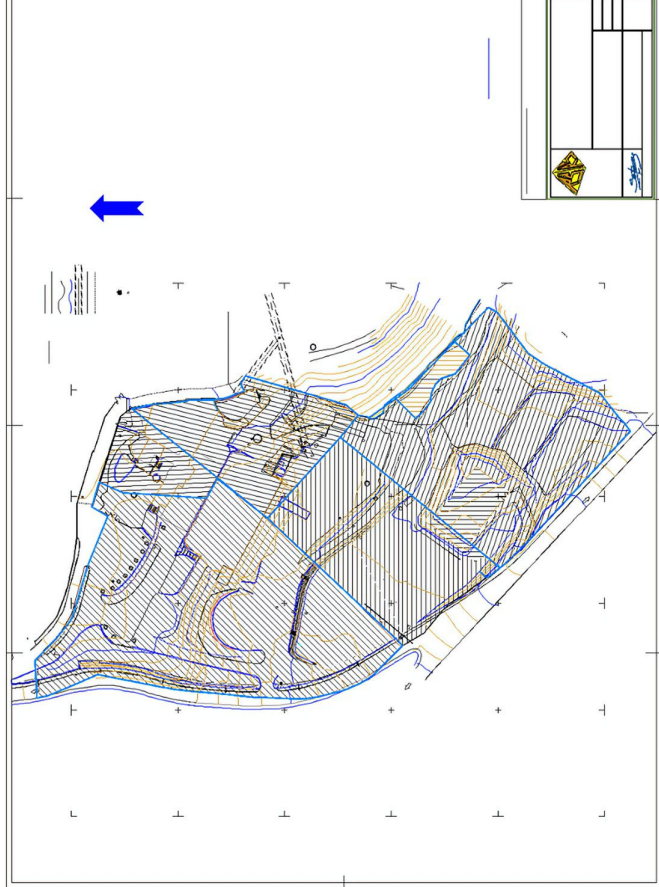












BENALMÁDENA*

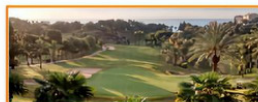


ESTUPA*BUDISTA**
BENALMÁDENA*PUEBLO*

PUERTO*MARINA



RESERVA*DEL*HIGUERÓN*
HOTEL*HILTON*



TORREQUEBRADA*GOLF*CLUB*



HOTEL*
TORREQUEBRADA