

Ref.-ID: MIBGR4693612

Elviria

Апартамент



3



2



149 m2

This brand-new residential complex is located on Elviria Beach, one of Marbella's most exclusive and sought-after areas — just a 10-minute drive from Marbella town centre and approximately 30 minutes from Málaga International Airport. Elviria is well known for offering one of the best beaches on the Costa del Sol, along with an excellent selection of restaurants, entertainment and top-quality golf courses nearby, including Santa Maria, Santa Clara, Rio Real and Marbella Golf, among others. The developer has recently completed Estrella del Mar, a modern beachfront complex set just a short walk from a stunning sandy beach. Designed in a contemporary style and built with high-end materials and the latest construction technologies, the development features carefully planned communal areas that provide both privacy and a sense of open space. We are pleased to present an exclusive apartment in this new development — a brand-new property, possibly one of the best units in the complex, located on a middle floor. Key features: • Spacious built area of 149 m<sup>2</sup> + terrace • Excellent layout with a well-distributed interior space • Bright living area with direct access to the terrace • Comfortable private bedroom area • Views over the landscaped gardens and swimming pool, with a slight sea view • Smart home system for comfort and control • Private underground parking space and storage room included A truly unique opportunity to acquire a turnkey home in a newly built contemporary complex in prestigious East Marbella, right by the sea — ideal for living, holidays or investment.

#### Расположение

- ✓ Первая линия пляжа
- ✓ На побережье
- ✓ Рядом с морем
- ✓ Передняя линия комплекс

#### Климат-контроль

- ✓ Кондиционер

#### Сад

- ✓ Общественный

#### ОРИЕНТАЦИЯ

- ✓ Юг

#### ВИД

- ✓ Море
- ✓ Бассейн

#### меры безопасности

- ✓ Огражденный комплекс

#### Состояние

- ✓ Отличное

#### Особенности

- ✓ Лифт

#### Парковка

- ✓ Подземная

#### бассейн

- ✓ Общий

#### Кухня

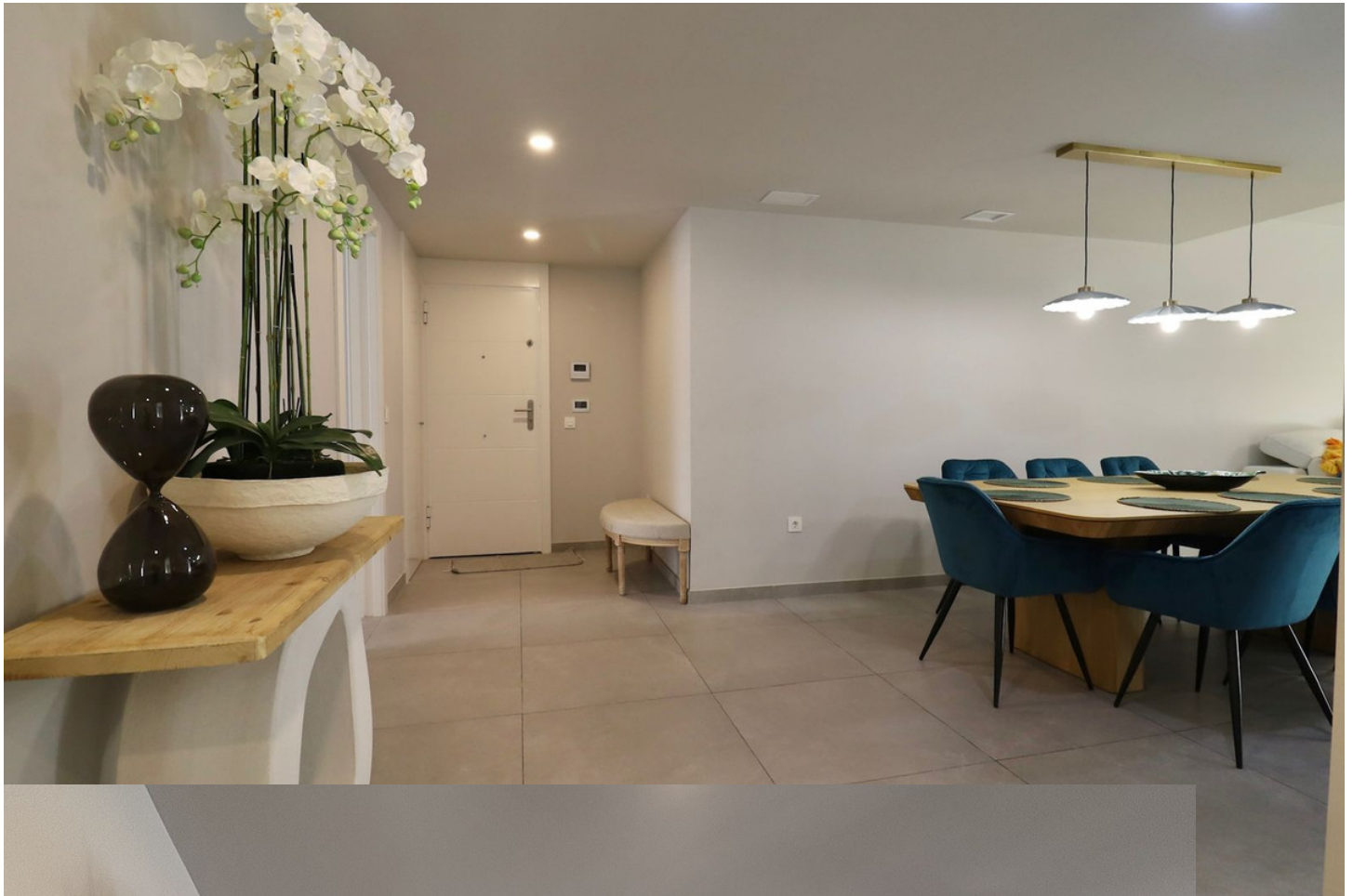
- ✓ Полностью оборудованная



































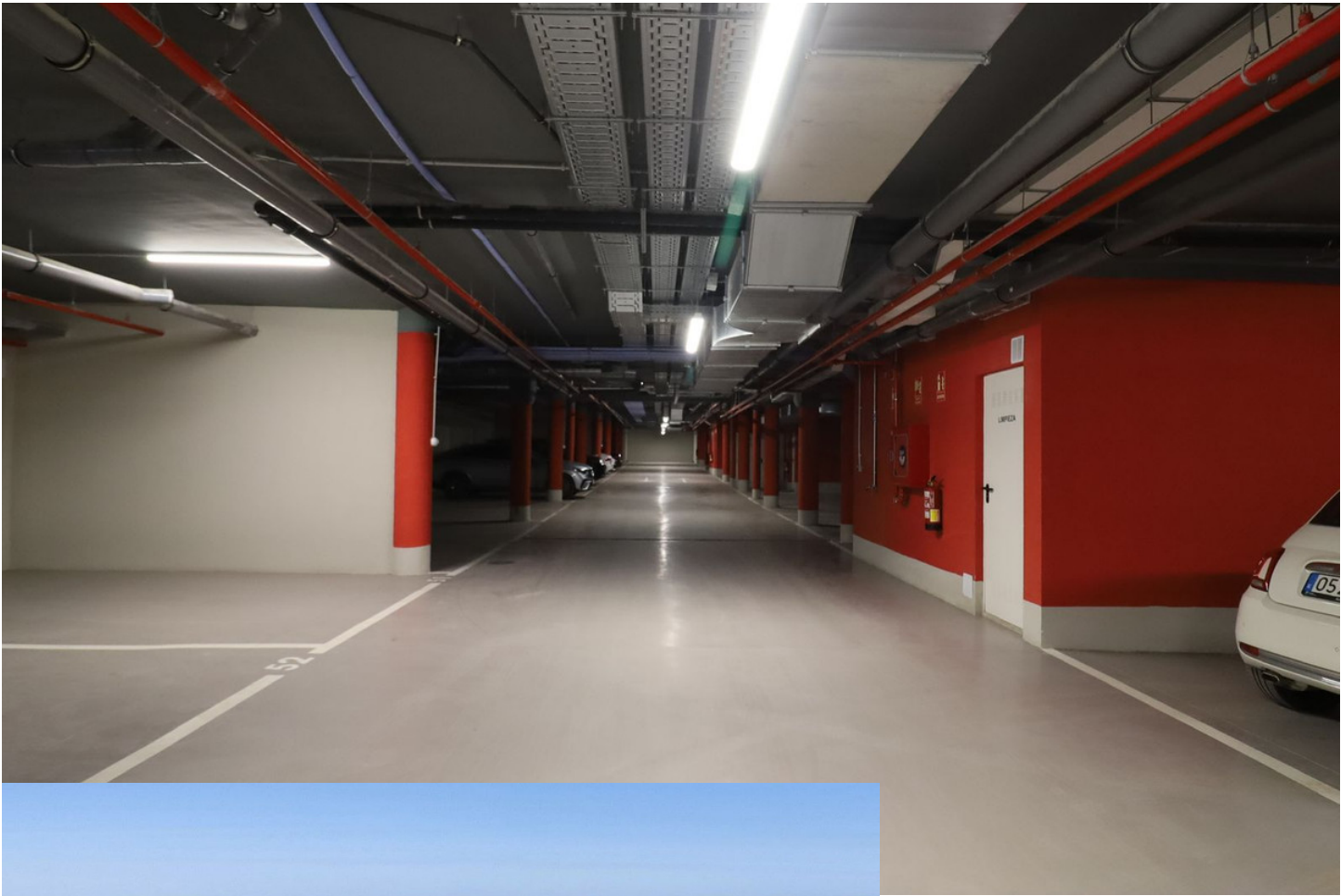














# **PORTAL 5** **PLANTA BAJA. PUERTA G**

3D.F

Superficies	m <sup>2</sup>
<b>S. Útil interior</b>	<b>103,55</b>
Baño 1	5,25
Baño 2	4,15
Cocina	10,10
Distribuidor	10,25
Dormitorio 1	13,95
Dormitorio 2	12,15
Dormitorio 3	12,70
Entrada	3,00
Lavadero	2,25
Salón-Comedor	29,75

<b>S. Construida C/Comunes</b>	<b>149,63</b>
Terraza	18,55
Jardín	-

Superficies según decreto 218/2005

<b>S. Construida vivienda</b>	<b>155,65</b>
S. Útil vivienda	111,03

