

**Ref.-ID: MIBGR4802929**

**Hacienda Las Chapas**

**Участок**



Premium Plot with Luxury Villa Project & Sea Views - Hacienda Las Chapas, Marbella Discover a unique opportunity to build your dream home in one of Marbella's most prestigious and tranquil residential areas. This exceptional 1,933 m<sup>2</sup> plot comes with a fully designed project for a stunning contemporary villa of 727 m<sup>2</sup>, created to embrace natural light, privacy, and the Mediterranean lifestyle. The future home is thoughtfully distributed over three levels plus a rooftop solarium, offering spacious open-plan living areas, floor-to-ceiling windows, and expansive terraces. The rooftop terrace provides beautiful sea views, perfect for enjoying Marbella's year-round sunshine. The project also includes a private garden and swimming pool, ideal for outdoor living and entertaining. One of the key advantages of this property is the flexibility it offers: as the project is still in its early stage, the design and finishes can be tailored to your personal taste, allowing you to create a truly bespoke home without starting from scratch. Building license expected in July, enabling a fast and efficient start to construction. Whether you are looking for a permanent residence, a holiday home, or a smart investment in the Costa del Sol, this is a rare opportunity to secure a prime property in a highly sought-after location.

**Расположение**

- ✓ Рядом с гольф-полем
- ✓ Рядом с морем
- ✓ Близко к школам
- ✓ Урбанизация

**ОРИЕНТАЦИЯ**

- ✓ Юг
- ✓ Юго-запад

**Состояние**

- ✓ Новое строительство

**бассейн**

- ✓ Приватный



















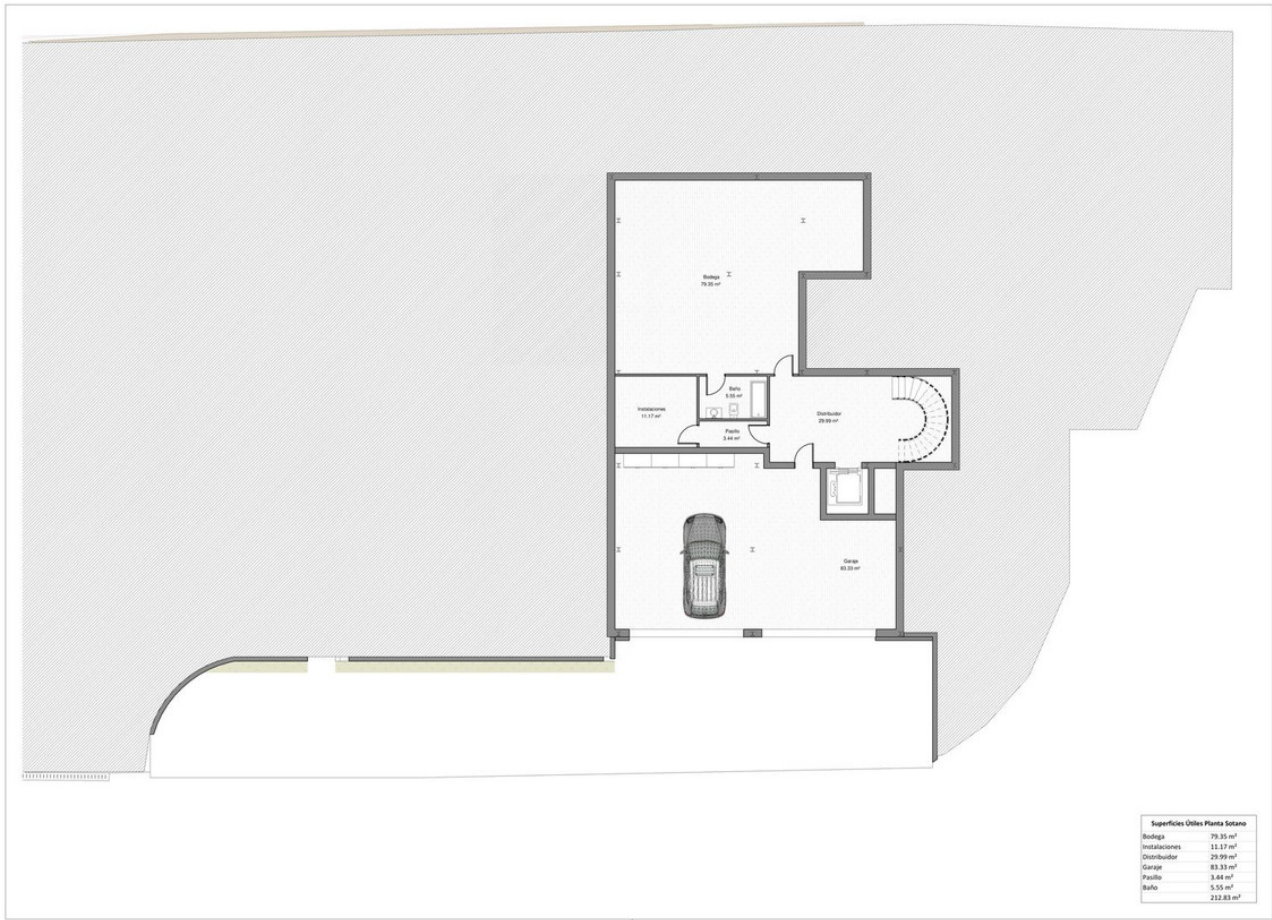


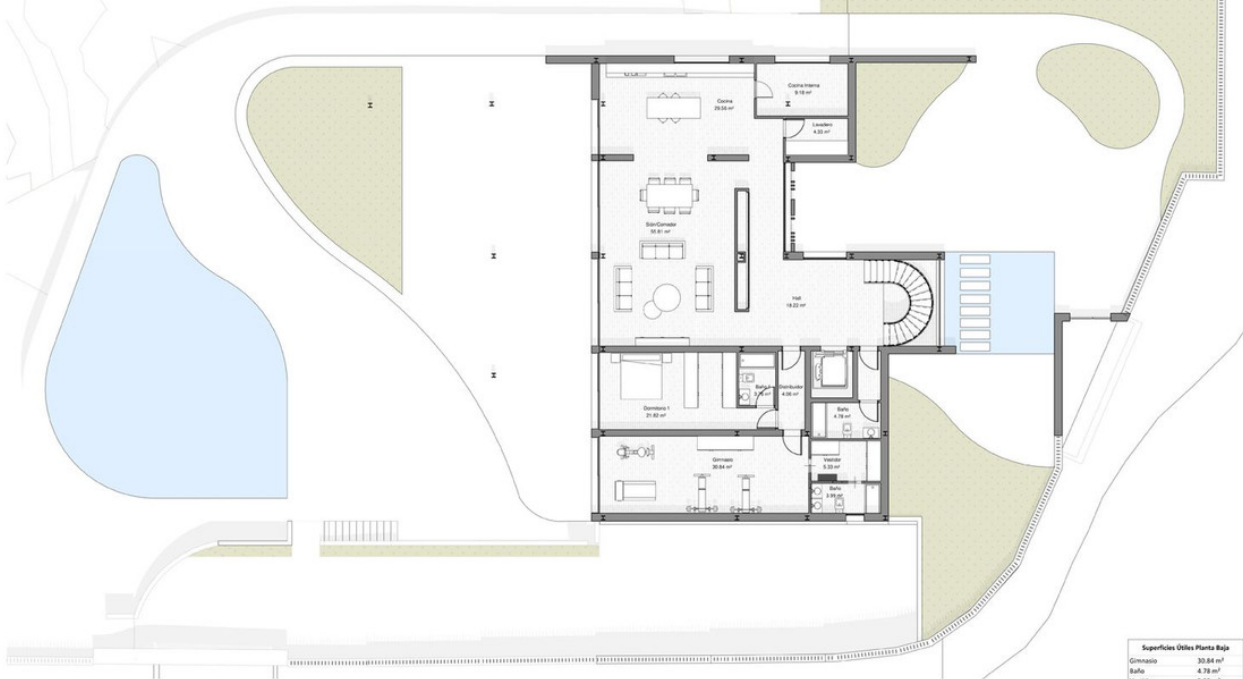






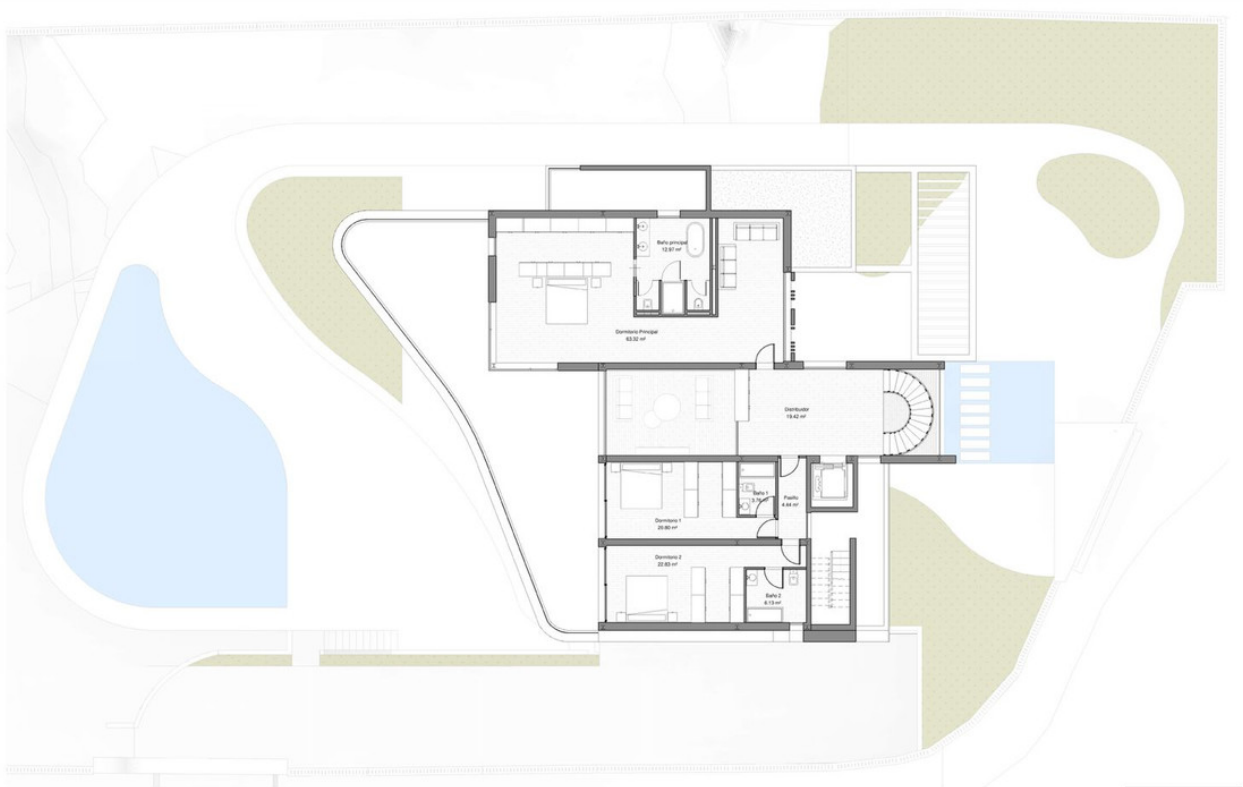






**Superficies Útiles Planta Baja**

Gimnasio	33.84 m <sup>2</sup>
Baño	4.78 m <sup>2</sup>
Trastero	5.33 m <sup>2</sup>
Baño	3.99 m <sup>2</sup>
Baño 1	3.76 m <sup>2</sup>
Dormitorio 1	21.82 m <sup>2</sup>
Distribuidor	4.06 m <sup>2</sup>
Cocina	22.54 m <sup>2</sup>
Cocina Interna	9.18 m <sup>2</sup>
Hall	18.22 m <sup>2</sup>
Bar/Comedor	15.81 m <sup>2</sup>
Lavadero	4.33 m <sup>2</sup>
<b>Total</b>	<b>191.68 m<sup>2</sup></b>



**Superficies Útiles Planta Primera**

Dormitorio Principal	63.32 m <sup>2</sup>
Distribuidor	15.42 m <sup>2</sup>
Baño principal	12.97 m <sup>2</sup>
Dormitorio 1	20.80 m <sup>2</sup>
Dormitorio 2	12.83 m <sup>2</sup>
Baño 2	6.13 m <sup>2</sup>
Baño 1	1.78 m <sup>2</sup>
Publico	6.48 m <sup>2</sup>
<b>Total</b>	<b>159.66 m<sup>2</sup></b>

