

Ref.-ID: MIBGR4930384

Benahavís

Коммерческая

ИБИ: 1,435 EUR / год

Мусор: 57 EUR / год



6



610 m2

PRIME INVESTMENT OPPORTUNITY: Located strategically on the main street of the charming village of Benahavís, this impressive building spans approximately 700 m² of constructed space and features over 320 m² of terraces. Combining elegance, versatility, and a prime location, this property is designed to maximize your return on investment. **WHY INVEST HERE?** * Unmatched Versatility: Restaurant, social club, boutique hotel... the choice is yours! * Prime Location: A gem in the heart of the Costa del Sol. * Guaranteed Profitability: Perfect for attracting luxury tourism, golf enthusiasts, and nature lovers. * Currently, it would be the only hotel, along with another slightly smaller one, in Benahavís. And in September of this year, 2025, the International Technological School called The Creators will begin operations, hosting 400 students and creating a steady flow of visitors who will need accommodation during their trips to visit their children. * Unbeatable Investment Opportunity (Limited Time): This property has been professionally appraised at over €2,550,000, but for visionary investors who decide to act during the next 3 months, it is available for just €1,690,000. This is a rare chance to acquire a high-potential asset with nearly €1 million in built-in equity—an immediate capital gain and a strategic head start in one of the fastest-growing areas of the Costa del Sol. And for those who prefer not to handle renovations or project management, we offer a turnkey solution: for just an additional €350,000, the project will be delivered fully completed and ready to start generating a return on your investment! **VERSATILITY AND POTENTIAL:** With 5 thoughtfully designed levels, this property offers endless possibilities. Currently equipped to operate as a restaurant and social club, it also includes an approved project to transform it into a spectacular boutique hotel. Designed to appeal to golf enthusiasts, lovers of luxury, nature, and fine dining, this space is positioned as a one-of-a-kind destination on the Costa del Sol. **STRATEGIC LOCATION:** Just 15-20 minutes from the beach, Puerto Banús, and Marbella, and surrounded by prestigious golf courses such as Los Arqueros, La Quinta, and El Higueral, this property is nestled in one of Spain's most sought-after areas. Its stunning natural surroundings and Benahavís's renowned culinary scene make this project a high-value investment. **PROPERTY HIGHLIGHTS:** 1. Ground Floor – Cafeteria 87 m² of interior space + outdoor terrace seating up to 30 people seated and 50 standing. Award-winning menu: Healthy, international breakfasts and brunches. Elegant, functional design ideal for continued operations or rebranding. 2. First Floor – Luxurious Event Space 194 m² of interior space with award-winning design and 5 large windows that fill the space with natural light. Capacity for 70 people seated and 100 standing. Soundproofed area with an independent bar, kitchen, and luxury bathrooms. Perfect for private events, live music, wine tastings, pairings, and more. 3. Upper Levels – Expansion Potential Third Level: A stunning 46 m² balcony accommodating 40 people seated and 60 standing, directly connected to the social areas. Fourth Level: Open area of 211 m² interior and 95 m² terrace with an independent bar, open kitchen, and luxury bathrooms. Perfect to continue operating as a restaurant or adapt into boutique hotel rooms. Fifth Level: Open space ready for your vision. Turn your vision into reality in this magical location! Contact us today for more information and to schedule a personalized visit.

Расположение

- ✓ Деревня
- ✓ Горная деревня
- ✓ Рядом с гольф-полем
- ✓ Рядом с магазинами
- ✓ Рядом с лесом

Особенности

- ✓ Рядом с транспортом
- ✓ Приватная терраса
- ✓ Бар
- ✓ Двойные стеклопакеты
- ✓ Ресторан на территории

ОРИЕНТАЦИЯ

- ✓ Восток

Мебель

- ✓ Частично меблированный

Состояние

- ✓ Нужен ремонт
- ✓ Недавно отремонтированная

Кухня

- ✓ Полностью оборудованная

ВИД

- ✓ Горы
- ✓ Лес
- ✓ Улица

Категория

- ✓ Выгодное предложение
- ✓ Инвестиции











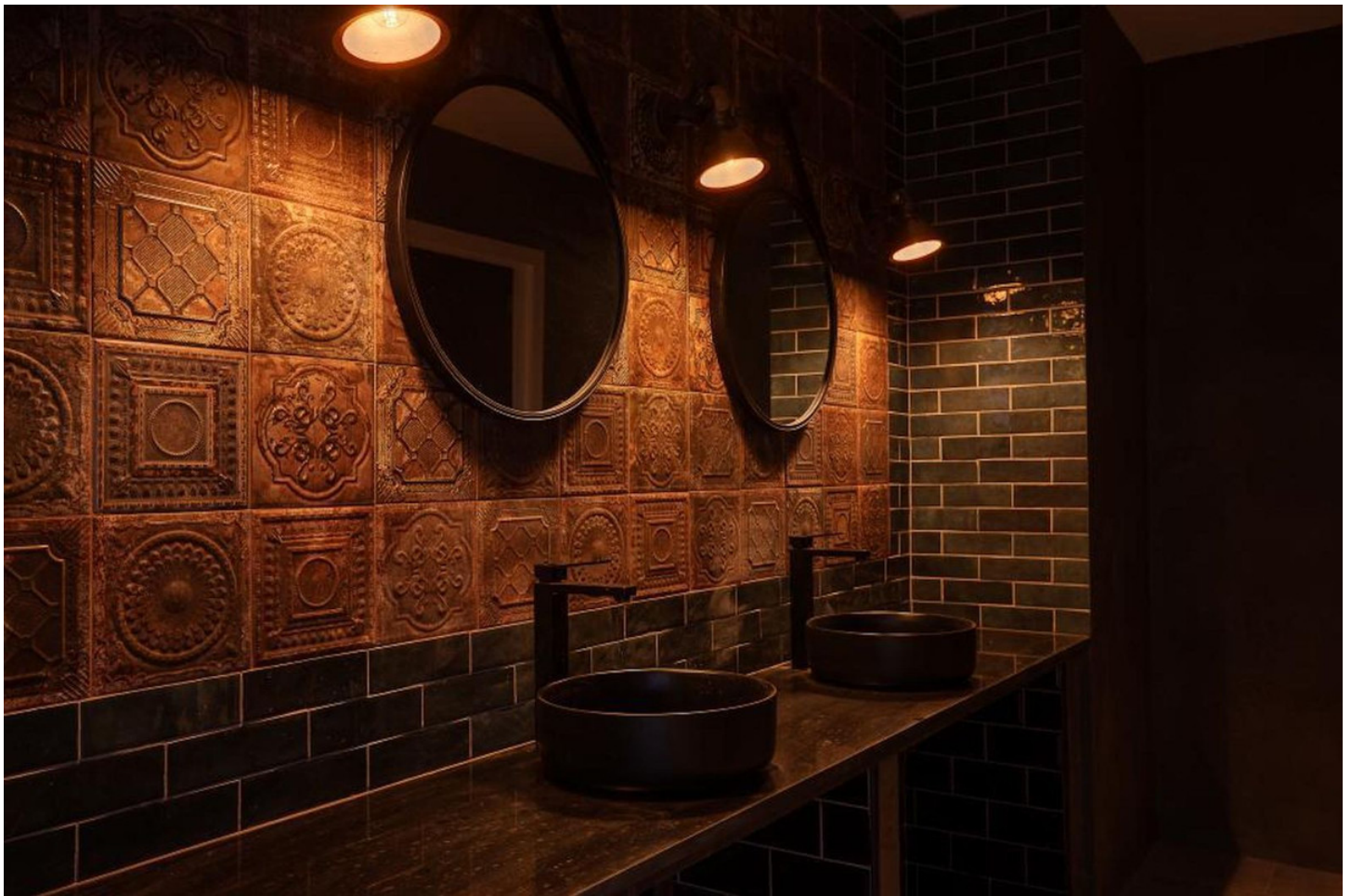


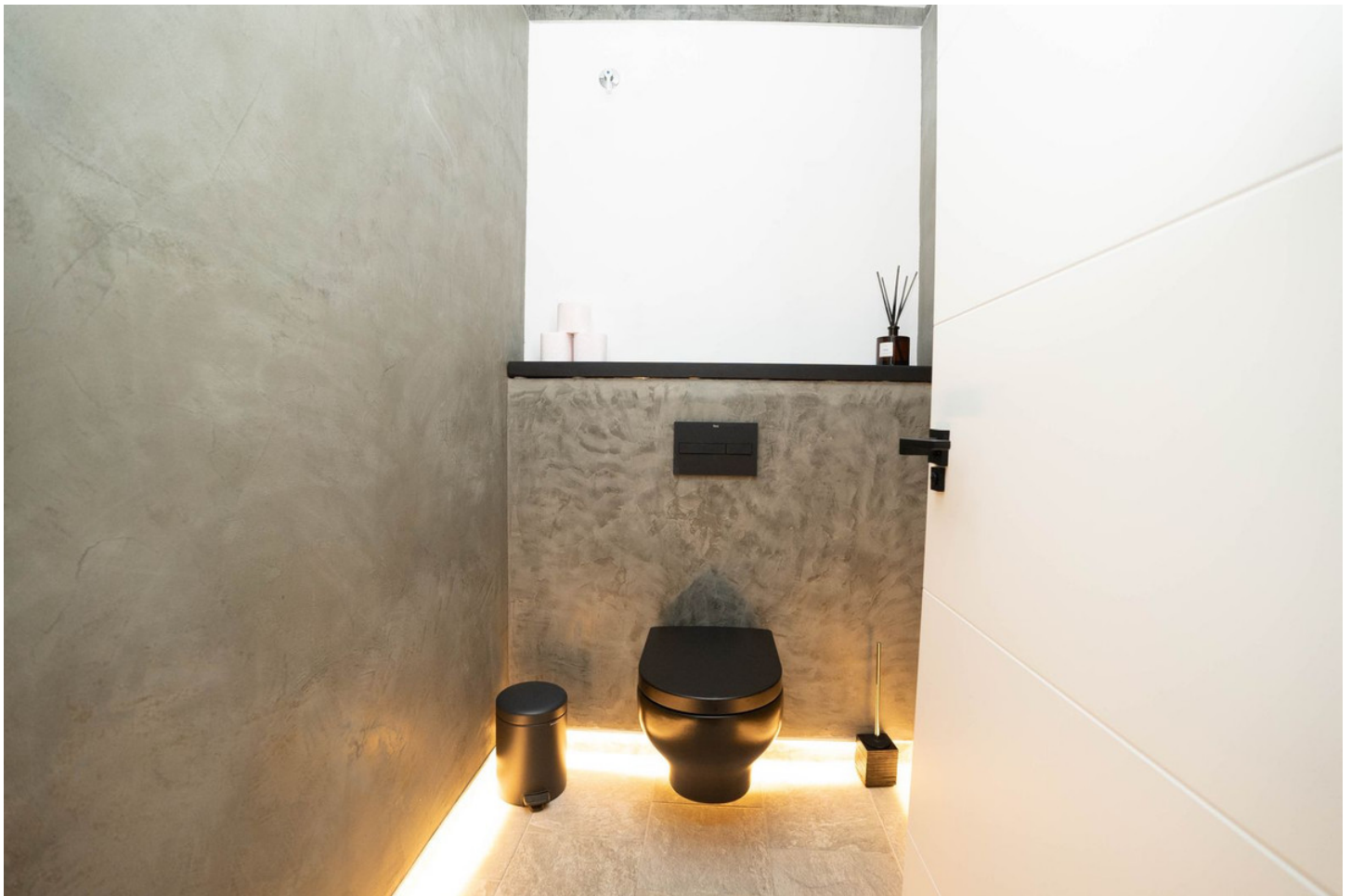


























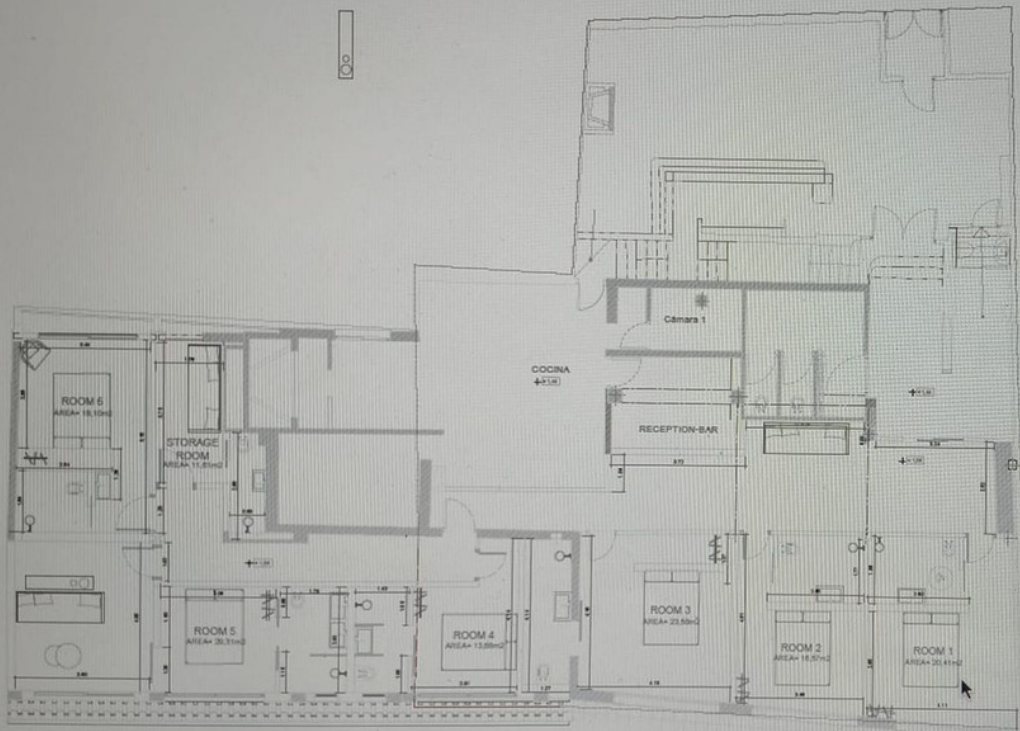








Avenida Andalucía



PLANTA COTA +1,44

SUP. CONST. = 111.42 m²
PLANTA PRIMERA
SUP. CONST. = 211.06 m²

HOTEL
SUP. CONST. 211.06 m²
RESTAURANT
SUP. CONST. 87.29 m²
LOUNGE
SUP. CONST. 228.26 m²

