

Ref.-ID: MIBGR4934050

Benalmadena

Участок



16513 m2

Incredible land to build a hotel complex, aparthotel, also ideal as a sports hotel on an existing luxury base. This 16513m² plot has a total buildable area of more than 11500m². Of which 65% is for the hotel rooms., allowing for about 250 rooms to be built. With an elegant restaurant and cafe, a paddle tennis club with 5 courts, a children's playground and an indoor playground and several rooms to host different events, it has successfully catered for multiple weddings in a single day. The total amount built at this current time is 4000m². It is a privileged location, a stone's throw from the famous Torrequebrada golf course, designed by the renowned José Gancedo, and just a few minutes from the beautiful sandy beaches of the Costa del Sol (1,2km to be exact). From the prestigious Torrequebrada area you can find in the center of Benalmádena Costa, 8 minutes by car, 20 minutes from Malaga airport and 25 minutes from the center of Marbella. Contact us to find out more about this profitable investment, you won't be disappointed.

Расположение

- ✓ Рядом с портом
- ✓ Рядом с магазинами
- ✓ Рядом с морем
- ✓ Близко к школам

ВИД

- ✓ Море
- ✓ Горы
- ✓ Гольф
- ✓ Сельская местность
- ✓ Панорамный

Особенности

- ✓ Падл теннис
- ✓ Ресторан на территории

Сад

- ✓ Приватный

Категория

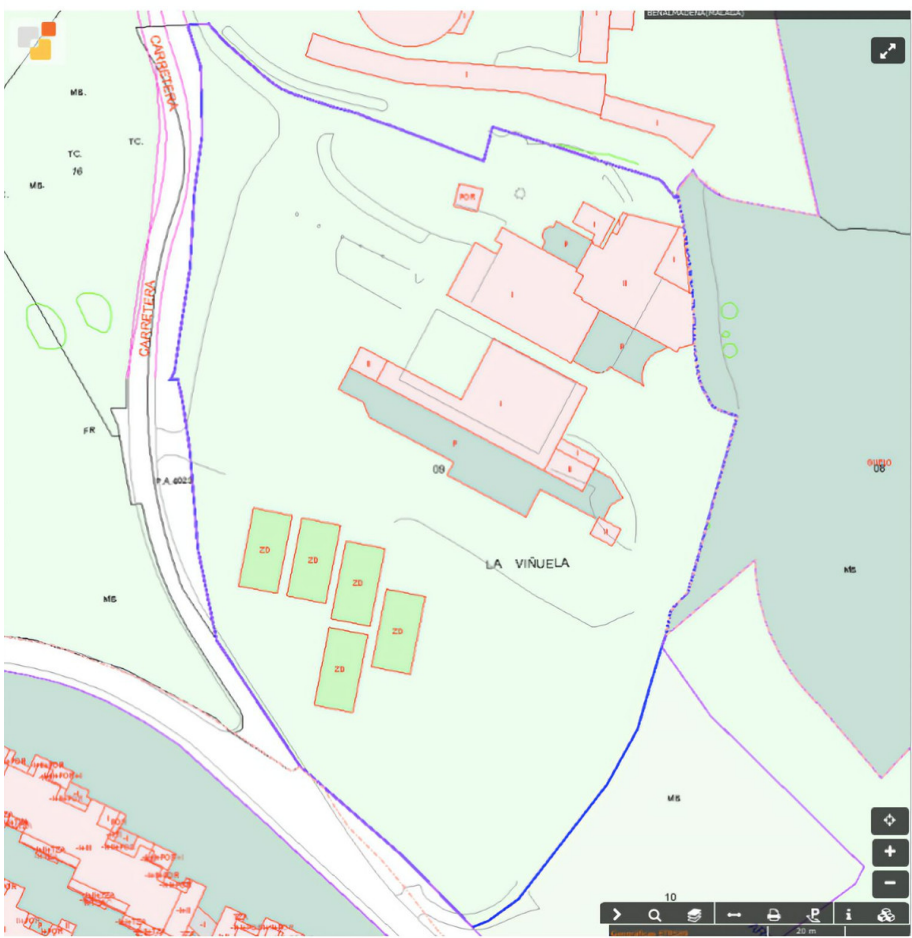
- ✓ Выгодное предложение
- ✓ Гольф
- ✓ Дома для отдыха

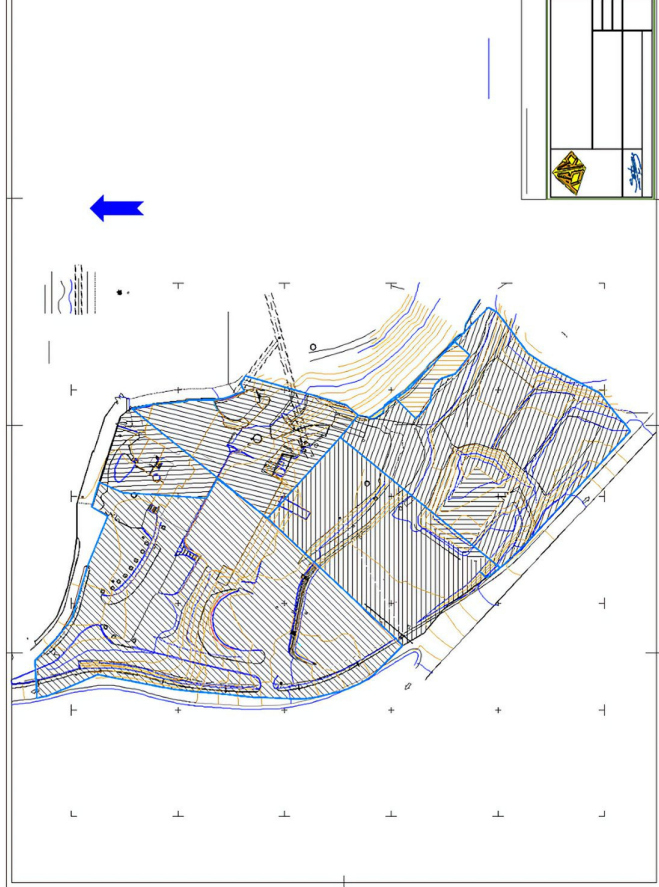












BENALMÁDENA*



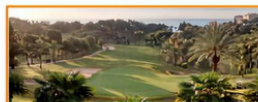
ESTUPA*BUDISTA**
BENALMÁDENA*PUEBLO*



PUERTO*MARINA



RESERVA*DEL*HIGUERÓN*
HOTEL*HILTON*



TORREQUEBRADA*GOLF*CLUB*



HOTEL*
TORREQUEBRADA