

Ref.-ID: MIBGR4976425

Benalmadena

Апартамент

Коммунальные: 2,220 EUR / год

ИБИ: 1,200 EUR / год



3



2



156 m2

Allow me to introduce you to this exquisite duplex penthouse, a real estate gem in the prestigious area of El Higuero, Benalmádena: Property Description: Privileged Location: Located in the heart of El Higuero, one of the most exclusive areas of the Costa del Sol. Panoramic and impressive views of the Mediterranean Sea, which will leave you breathless. Proximity to all types of services: supermarkets, gym, restaurants and much more. Penthouse Features: Elegant and modern duplex design, with high quality finishes. Large bright spaces, thanks to its large windows and orientation. Three spacious bedrooms, two of them with en-suite bathrooms for greater privacy. An additional guest toilet. Large terraces where you can enjoy the Mediterranean climate and sea views. Private jacuzzi on the terrace, ideal for relaxing and enjoying unique moments. Additional Amenities: Two closed garage spaces in a box, for your total comfort and security. Access to the Higuero Resort facilities, which include gym, spa, paddle tennis courts, restaurants and beach club. The higuero area has private security. An Exclusive Lifestyle: This duplex penthouse offers a luxury lifestyle, where you can enjoy the tranquility and beauty of the Costa del Sol. Ideal for those looking for an exclusive home, with all the comforts and services at your fingertips. In summary: This duplex penthouse in El Higuero is a unique opportunity to live in a privileged environment, with spectacular views and all the comforts you could want. And in compliance with the Decree of the Junta de Andalucía 218/2005 of October 11, it is reported that the notary, registration, ITP and other expenses inherent to the sale are not included in the price. The information provided is indicative, is not binding and has no contractual value. The offer is subject to errors, price changes, availability and/or withdrawal from the market without prior notice. Said information may have undergone modifications that have not yet been incorporated. We suggest you contact the company to obtain the latest data and/or confirm those presented here. If you would like more information or to arrange a visit, do not hesitate to contact us.

ОРИЕНТАЦИЯ

✓ Юг

Состояние

✓ Хорошее

бассейн

✓ Общий

Климат-контроль

✓ Кондиционер

✓ Центральное отопление

ВИД

✓ Море

Особенности

✓ Лифт

✓ Приватная терраса

✓ Кладовка

✓ Джакузи

Мебель

✓ Полностью меблированный

Кухня

✓ Полностью оборудованная

Парковка

✓ Более чем один

Коммунальные услуги

✓ Питьевая вода









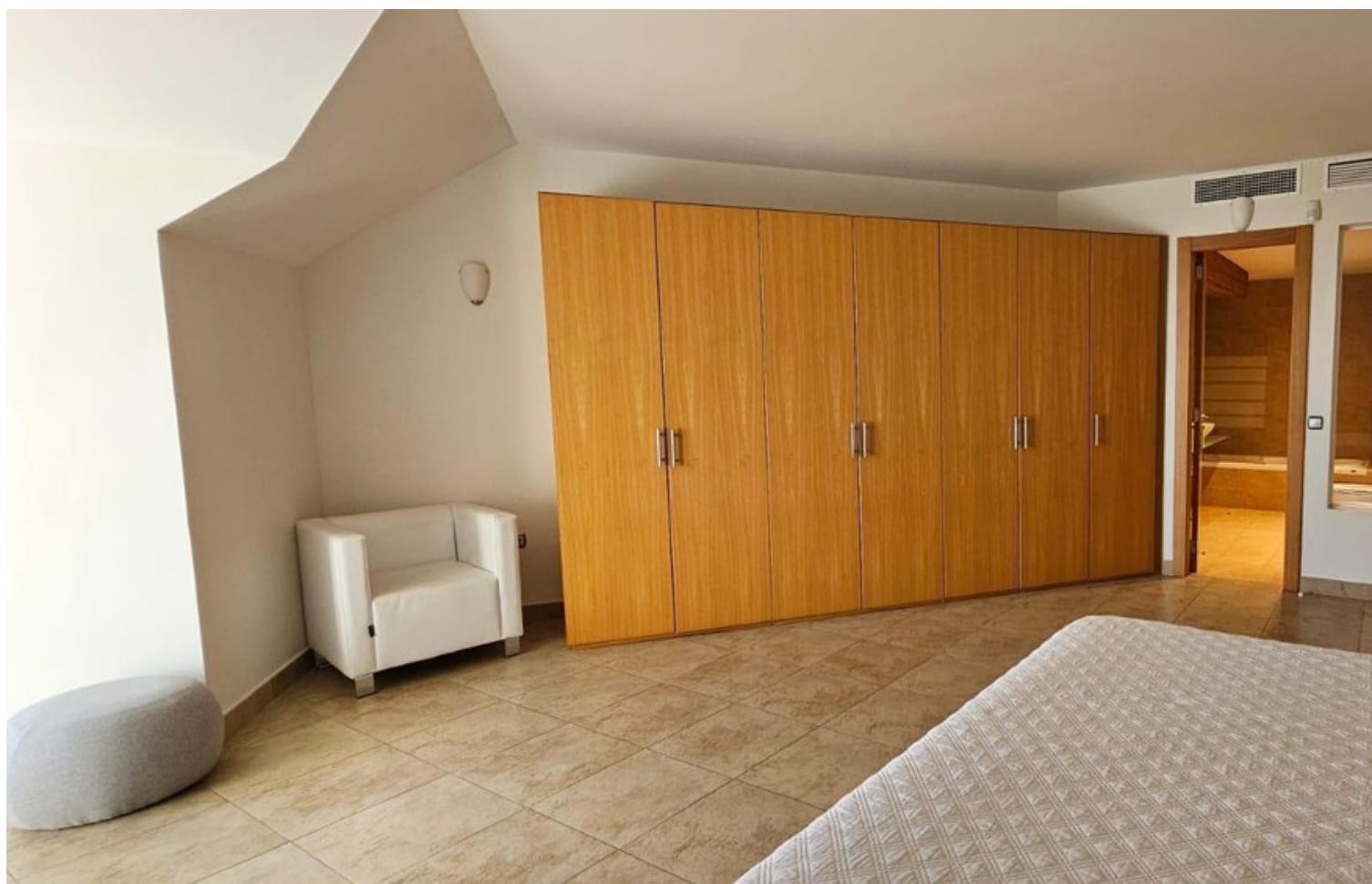












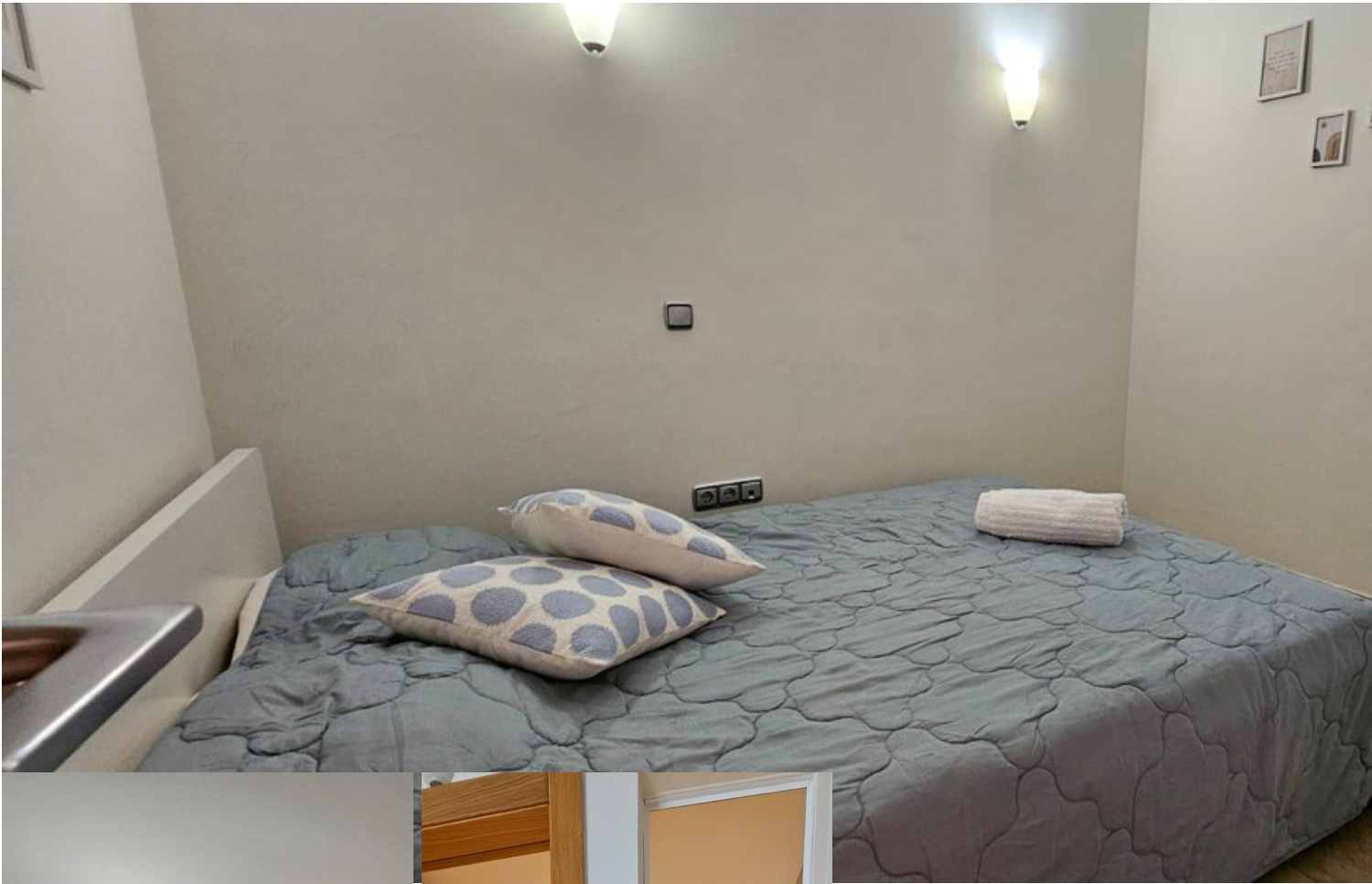












VIII



CLUB DE CAMPO & SPA
COUNTRY CLUB & SPA



NIVEL QUINTO DUPLEX
TIPO V

	SUPERFICIE CONSTRUIDA VIVIENDA	SUPERFICIE ABIERTA CUBIERTA	SUPERFICIE ABIERTA DESCUBIERTA	SUPERFICIE TOTAL POR VIVIENDA
BAJA	54.35	11.54	12.72	156.09
ALTA	77.48			

ALTOS DEL HIGUERÓN

NOTA: PLANOS ORIENTATIVOS SUJETOS A MODIFICACIONES POR CRITERIO S ESTÉTICOS O ADMINISTRATIVOS