

Ref.-ID: MIBGR5026798

Riviera del Sol

Дом

Коммунальные: 1,308 EUR /  
год

ИБИ: 381 EUR / год

Мусор: 150 EUR / год



3



2



128 m2



172 m2

The property now has a vacation rentals licence. Making it ideal for investment into the holiday rentals market. This brand-new semi-detached villa, completing construction by the end of 2024, is designed for modern living in a prime location near Málaga. Located in Mijas Costa with amazing panoramic views of the sea. Less than a 10 minute drive to the coast, and with 2 golf courses right on the door step. You have Marbella Town and La Cala de Mijas close by. Malaga International airport is also less than 25 minutes away. The main entrance leads to an inviting upper floor featuring an open-concept living-dining room and a fully equipped open-plan kitchen, plus a convenient guest toilet. The highlight? A spacious 8m+ terrace offering stunning panoramic sea and mountain views, perfectly oriented for afternoon sun with its southwest aspect. Downstairs, find ultimate comfort with three bright bedrooms and two well-appointed bathrooms (one en-suite). All bedrooms open directly onto your generous 190 m<sup>2</sup>+ garden, providing a seamless indoor-outdoor flow. You'll even enjoy glimpses of the sea from the master bedroom. As a resident, you'll benefit from fantastic amenities including a communal pool, a well-equipped gym, and a convenient co-working space. Practicality is covered with two large outdoor parking spaces and a customizable entrance area. Consider this incredible opportunity: The neighboring semi-detached villa is also on the market for €650,000. Secure both at the discounted price of €1,200,000 to create a magnificent, brand-new detached villa with prime sea views and the exciting possibility of adding a private pool!

**Расположение**

- ✓ Рядом с гольф-полем
- ✓ Рядом с морем
- ✓ Рядом с лесом
- ✓ Урбанизация

**Климат-контроль**

- ✓ Кондиционер

**Кухня**

- ✓ Полностью оборудованная

**Категория**

- ✓ Перепродажа

**ОРИЕНТАЦИЯ**

- ✓ Юго-запад

**ВИД**

- ✓ Море
- ✓ Горы
- ✓ Панорамный
- ✓ Лес

**Сад**

- ✓ Приватный

**Состояние**

- ✓ Новое строительство

**Особенности**

- ✓ Крытая терраса
- ✓ Встроенные шкафы
- ✓ Рядом с транспортом
- ✓ Приватная терраса
- ✓ Ванная комната
- ✓ Двойные стеклопакеты

**меры безопасности**

- ✓ Электрические жалюзи
- ✓ Сейф

**бассейн**

- ✓ Общий

**Мебель**

- ✓ Без мебели

**Парковка**

- ✓ Открытая
- ✓ Приватная

























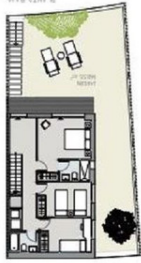




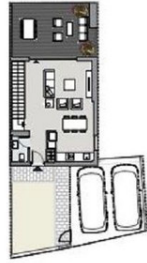








PIANTA BATH



PIANTA BATH





















