

Ref.-ID: MIBGR5099521

Calahonda

Апартамент

Коммунальные: 1,236 EUR /
год

ИБИ: 238 EUR / год

Мусор: 77 EUR / год



2



1



52 m2

"Discover your new home by the sea! This spectacular 100% renovated apartment offers a modern and elegant design, with excellent quality materials that guarantee a cozy and functional environment. With 36 m² built, the property has a master bedroom with a built-in dressing room and a second room ideal as an office or adaptable to a second bedroom. The kitchen, integrated into the bright main living room, has been designed by Cocinas "SCHMIDT", which adds a touch of distinction to this space. Imagine enjoying incredible views of the sea and the African coast from the 6th floor of this building with an elevator. The South-West orientation allows natural light to flood every corner, creating a warm and pleasant atmosphere. In addition, the hot/cold air conditioning in each room ensures your comfort throughout the year. The location is unbeatable, with access to all the necessary services for your day-to-day life and adapted for people with reduced mobility. The house also includes a full bathroom and built-in wardrobes to maximize storage space. And for those days of relaxation, you can enjoy the pool and the community garden. Don't miss the opportunity to live in this paradise!"

Расположение

- ✓ Первая линия пляжа
- ✓ На побережье
- ✓ Передняя линия комплекс

Климат-контроль

- ✓ Кондиционер

Кухня

- ✓ Полностью оборудованная

Коммунальные услуги

- ✓ Электричество
- ✓ Питьевая вода

ОРИЕНТАЦИЯ

- ✓ Юго-запад

ВИД

- ✓ Море
- ✓ Горы
- ✓ Пляж
- ✓ Бассейн

Сад

- ✓ Общественный

Категория

- ✓ Первая линия пляжа
- ✓ Элитная

Состояние

- ✓ Отличное
- ✓ Недавно отремонтированная

Особенности

- ✓ Лифт
- ✓ Встроенные шкафы
- ✓ Доступ для инвалидов
- ✓ Двойные стеклопакеты
- ✓ Ресторан на территории

меры безопасности

- ✓ Огражденный комплекс

бассейн

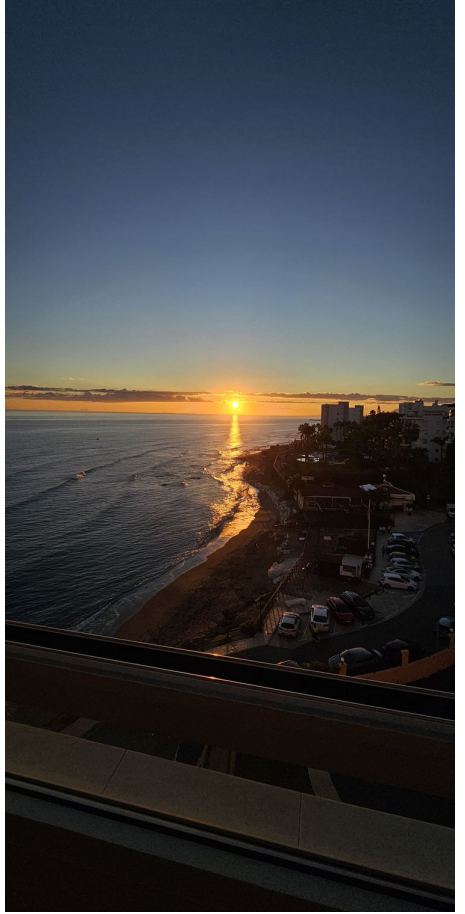
- ✓ Общий

Мебель

- ✓ Полностью меблированный

Парковка

- ✓ Улица



















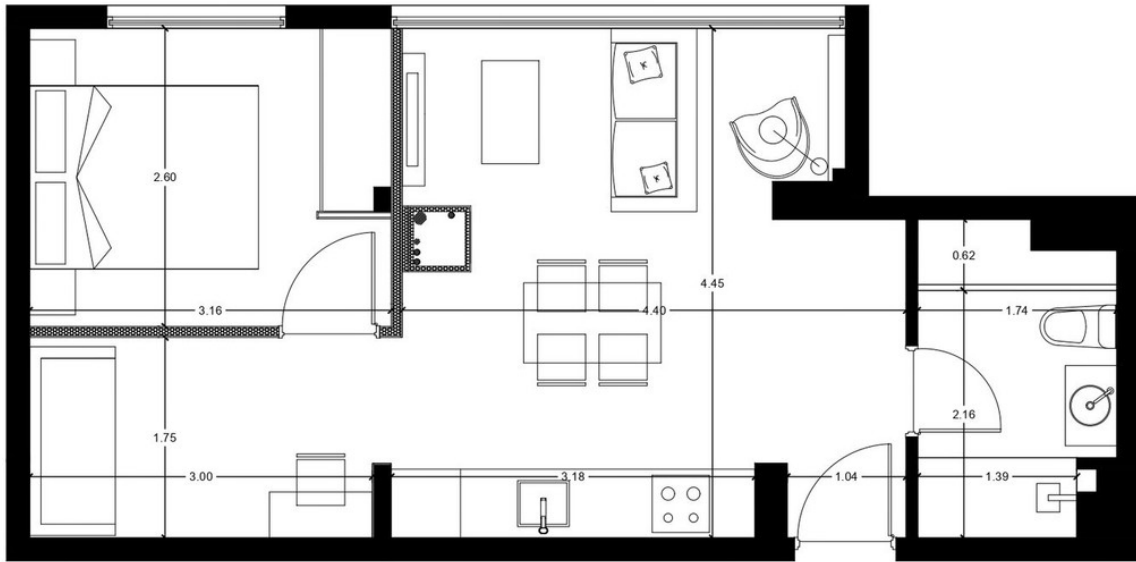












REFERENCIAS:

**EDIFICIO
CALAHONDA**

CALAHONDA
MUJAS

DOCUMENTACION DE PROYECTO

PLANO:
PLANTA BAJA CON MEDIDAS

ESCALA: 1:50

Arq-02





