

Ref.-ID: MIBGR5118034

Estepona

Дом

Коммунальные: 1,800 EUR / год



3



2



141 m2



226 m2

Modern and elegant villa with extraordinary panoramic views of the sea, the mountains, Gibraltar, and Africa, located in a privileged area with direct access to beautiful beaches via a convenient footbridge or an easy underground tunnel. This property is part of a unique architectural complex designed by renowned European architect Aubrey David, widely awarded for his innovative and aesthetic approach. Set within a well-established and meticulously maintained residential community, it offers access to six communal swimming pools, mature gardens, a gym, and a tennis court. Each villa in the complex features a unique design and layout, adding to the exclusive character of the community. The villa enjoys an excellent location, just a short drive from Estepona, La Duquesa, and Sabinillas, and well connected to Sotogrande, Marbella, Gibraltar, and Málaga Airport. All essential services, supermarkets, schools, and the new hospital are conveniently close, just 2 km away. Ideal for golf enthusiasts, the property is next to Estepona Golf and close to prestigious courses such as Finca Cortesin. Facing southeast and recently renovated, the villa retains its charming original rustic style. It is laid out over several levels, allowing for an abundance of natural light through its many windows. The home features several terraces with different orientations, a private pool, and a spacious covered parking area. Holiday rentals are allowed, with a 20% supplement applied to the community fee. A property full of character, charm, and an unbeatable location. Highly recommended for viewing.

Расположение

- ✓ Рядом с портом
- ✓ Рядом с магазинами
- ✓ Рядом с морем
- ✓ Рядом с городом
- ✓ Близко к школам
- ✓ Рядом с лесом
- ✓ Рядом с портом
- ✓ Урбанизация

Климат-контроль

- ✓ Камин

Кухня

- ✓ Полностью оборудованная

Коммунальные услуги

- ✓ Электричество
- ✓ Питьевая вода
- ✓ Телефон

ОРИЕНТАЦИЯ

- ✓ Юго-восток

ВИД

- ✓ Море
- ✓ Горы
- ✓ пляж
- ✓ Порт
- ✓ Сельская местность
- ✓ Панорамный
- ✓ Сад
- ✓ Бассейн

Сад

- ✓ Общественный
- ✓ Приватный
- ✓ Простой в уходе

Категория

- ✓ Дома для отдыха
- ✓ Инвестиции
- ✓ Элитная
- ✓ Перепродажа
- ✓ Современного

Состояние

- ✓ Отличное
- ✓ Недавно отделанная

Особенности

- ✓ Встроенные шкафы
- ✓ Рядом с транспортом
- ✓ Приватная терраса
- ✓ Спутниковое телевидение
- ✓ WiFi
- ✓ Тренажерный зал
- ✓ Теннисный корт
- ✓ Ванная комната
- ✓ Барбекю
- ✓ Двойные стеклопакеты
- ✓ Возле церкви
- ✓ Оптическое волокно

меры безопасности

- ✓ Домофон
- ✓ Сейф

бассейн

- ✓ Общий
- ✓ Приватный

Мебель

- ✓ По желанию

Парковка

- ✓ С навесом
- ✓ Открытая
- ✓ Улица
- ✓ Более чем один
- ✓ Общая
- ✓ Приватная



































































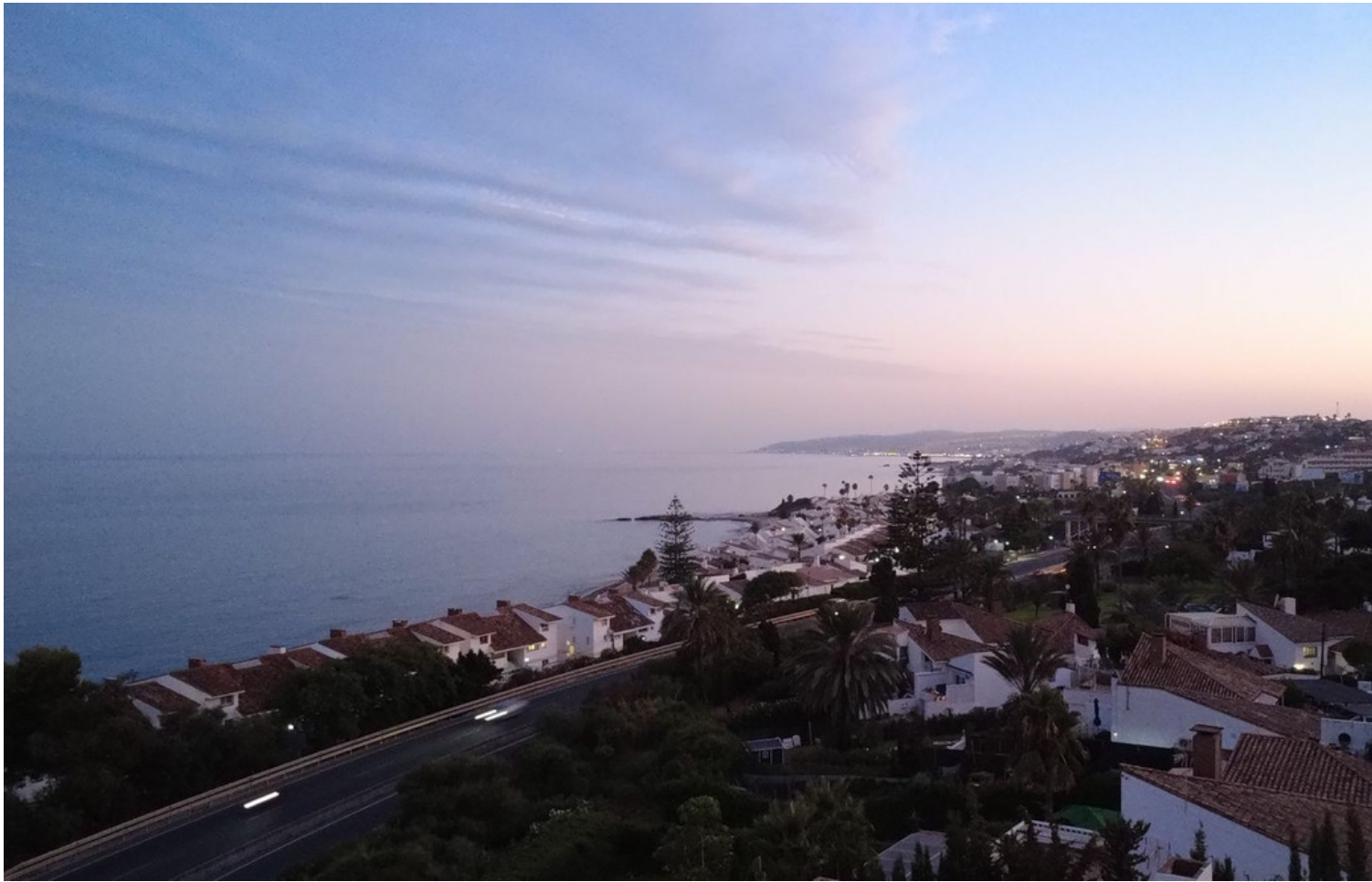




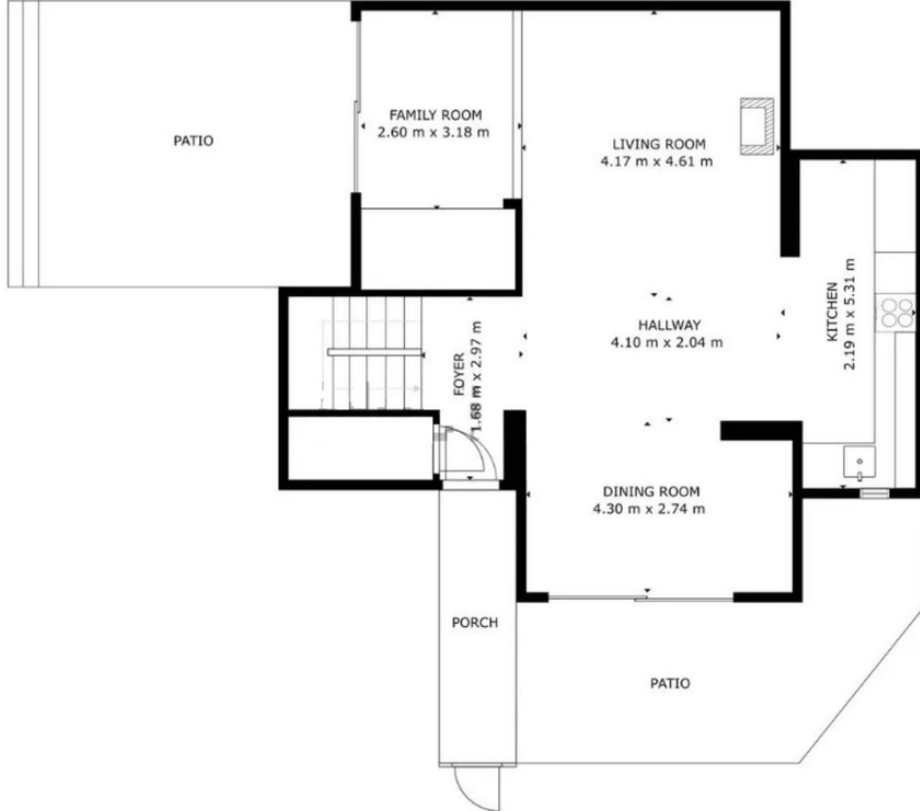




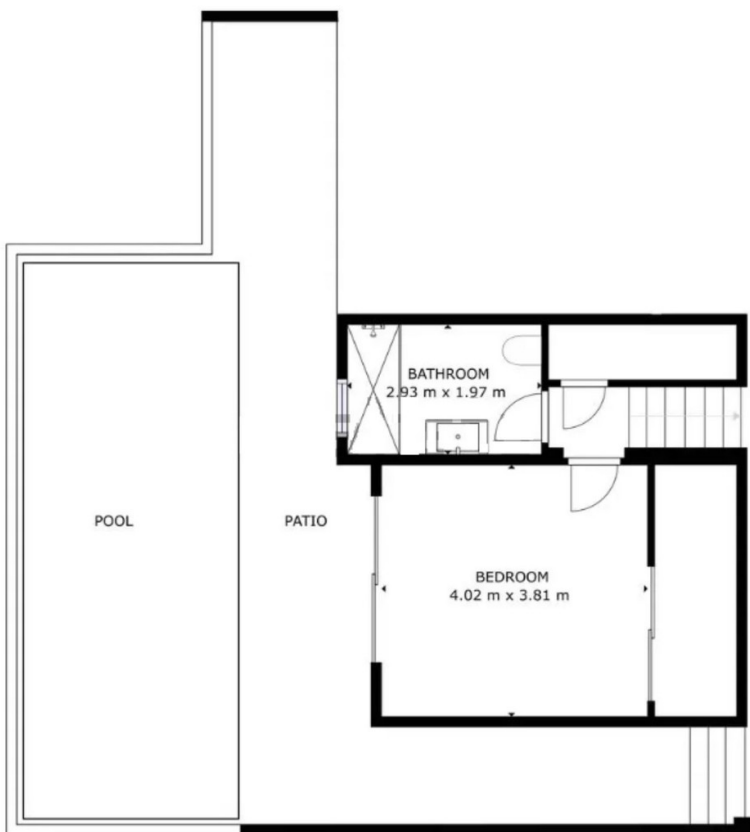




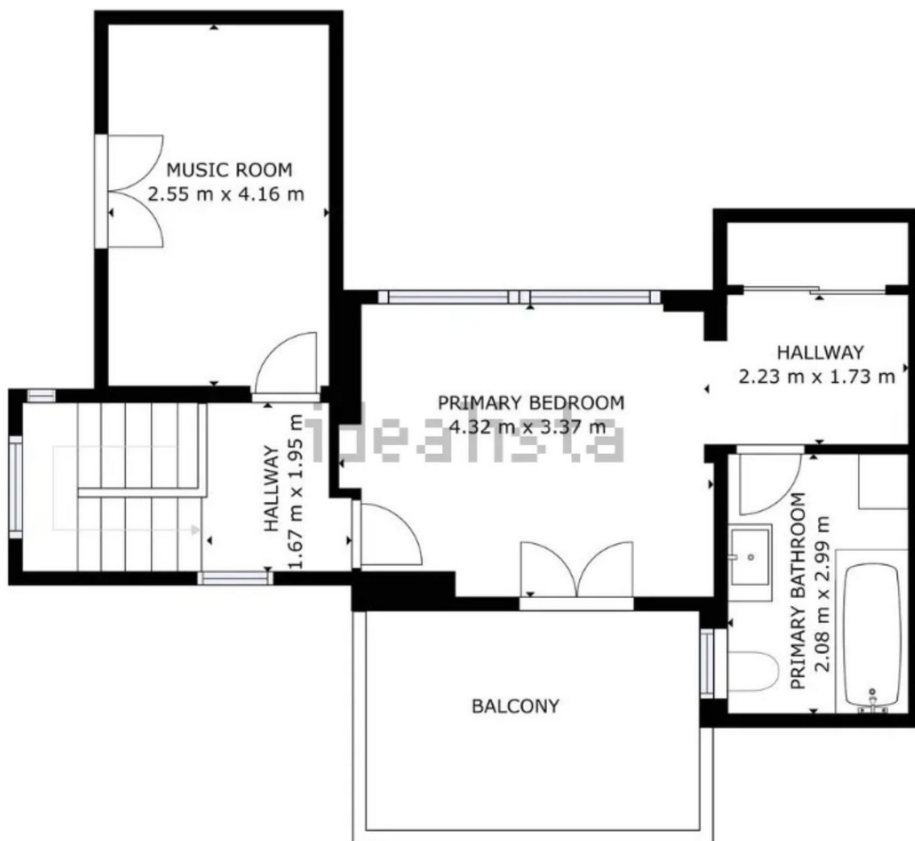




GROSS INTERNAL AREA
FLOOR 1: 32.79 m², FLOOR 2: 74.17 m², FLOOR 3: 44.72 m²
EXCLUDED AREAS: PORCH: 5.56 m², PATIO: 97.39 m², BALCONY: 10.08 m²
TOTAL: 151.68 m²
SIZES AND DIMENSIONS ARE APPROXIMATE, ACTUAL MAY VARY.



GROSS INTERNAL AREA
FLOOR 1: 32.79 m², FLOOR 2: 74.17 m², FLOOR 3: 44.72 m²
EXCLUDED AREAS: PORCH: 5.56 m², PATIO: 97.39 m², BALCONY: 10.08 m²
TOTAL: 151.68 m²
SIZES AND DIMENSIONS ARE APPROXIMATE, ACTUAL MAY VARY.



GROSS INTERNAL AREA
FLOOR 1: 32.79 m², FLOOR 2: 74.17 m², FLOOR 3: 44.72 m²
EXCLUDED AREAS: PORCH: 5.56 m², PATIO: 97.39 m², BALCONY: 10.08 m²
TOTAL: 155.68 m²
*70% AND FINISHINGS ARE APPROXIMATE. ACTUAL MAY VARY.

