

Ref.-ID: MIBGR5120911

Atalaya

Участок



2595 m²

Exclusive Beachside Plots - Costa del Sol An exceptional opportunity to acquire three prime plots of 865 m² each (total 2,595 m²), available individually or as a combined estate. Ideally suited for the creation of three luxury villas or one expansive private residence, these plots are positioned in one of the most sought-after beachside enclaves on the Costa del Sol. The land is perfectly flat and beautifully green, offering effortless building potential with full planning permissions already in place. Located just a short stroll from the golden sands, these plots also enjoy walking-distance access to a supermarket, pharmacy, and a selection of quality restaurants. The area is peaceful and exclusive, yet benefits from excellent road connections, placing Puerto Banús, Marbella, and Estepona just minutes away. This is more than just land; it is the foundation for a lifestyle defined by elegance, convenience, and coastal beauty. Whether envisioned as three distinctive villas or one magnificent estate, this property offers a rare chance to secure your place in one of Europe's most desirable destinations.

Расположение

- ✓ Город
- ✓ Коммерческая зона
- ✓ На побережье
- ✓ Рядом с гольф-полем
- ✓ Рядом с портом
- ✓ Рядом с магазинами
- ✓ Рядом с морем
- ✓ Рядом с городом
- ✓ Близко к школам
- ✓ Рядом с портом
- ✓ Урбанизация

Особенности

- ✓ Рядом с транспортом
- ✓ Рядом с мечетью
- ✓ Возле церкви

Категория

- ✓ Первая линия пляжа
- ✓ Инвестиции
- ✓ С разрешением на строительство
- ✓ Современного

ОРИЕНТАЦИЯ

- ✓ Юго-восток
- ✓ Юг
- ✓ Юго-запад

Сад

- ✓ Приватный

бассейн

- ✓ Место для бассейна

Парковка

- ✓ Улица
- ✓ Более чем один
- ✓ Приватная

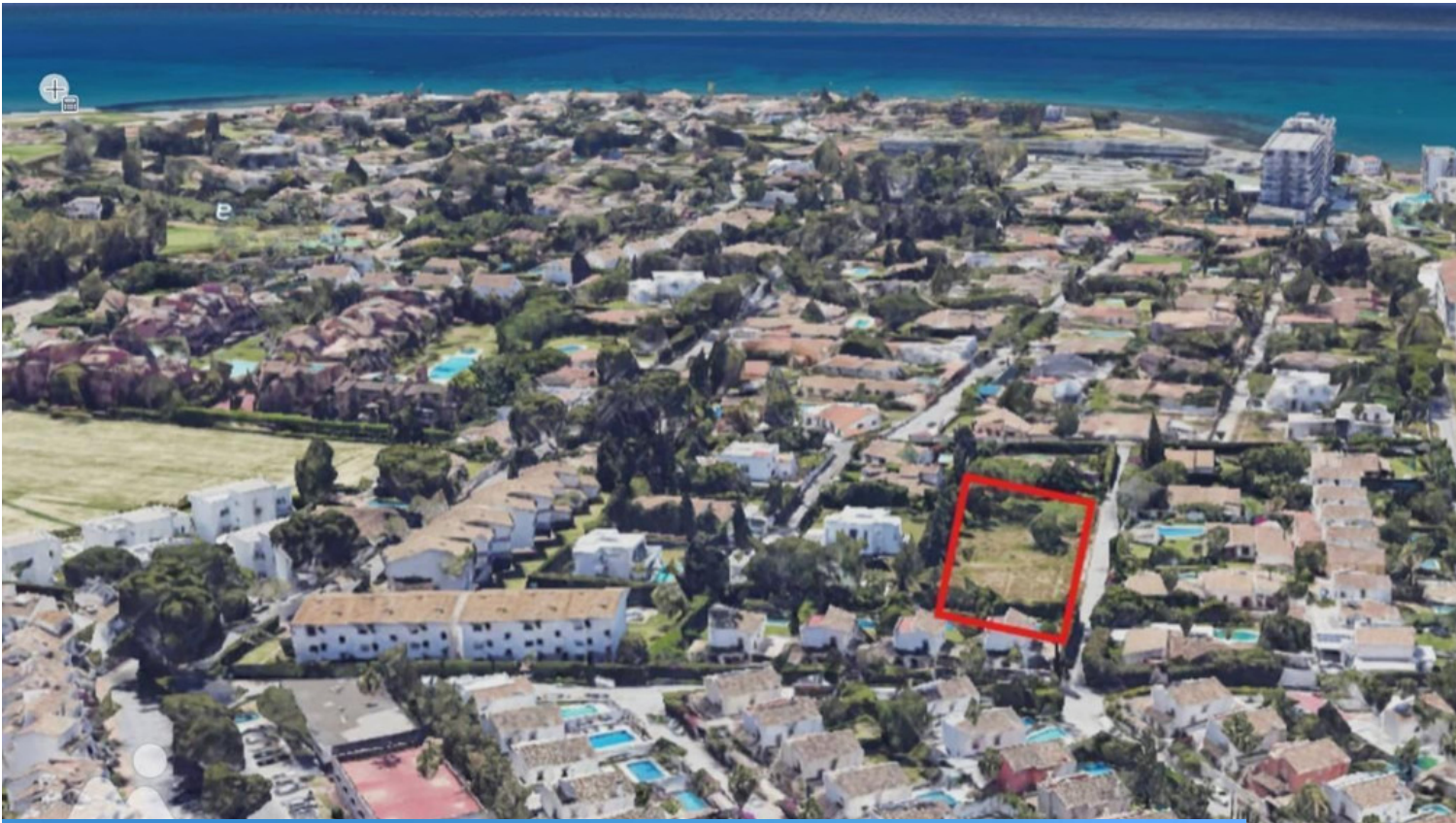
ВИД

- ✓ Море
- ✓ Горы
- ✓ Сад
- ✓ Город
- ✓ Улица

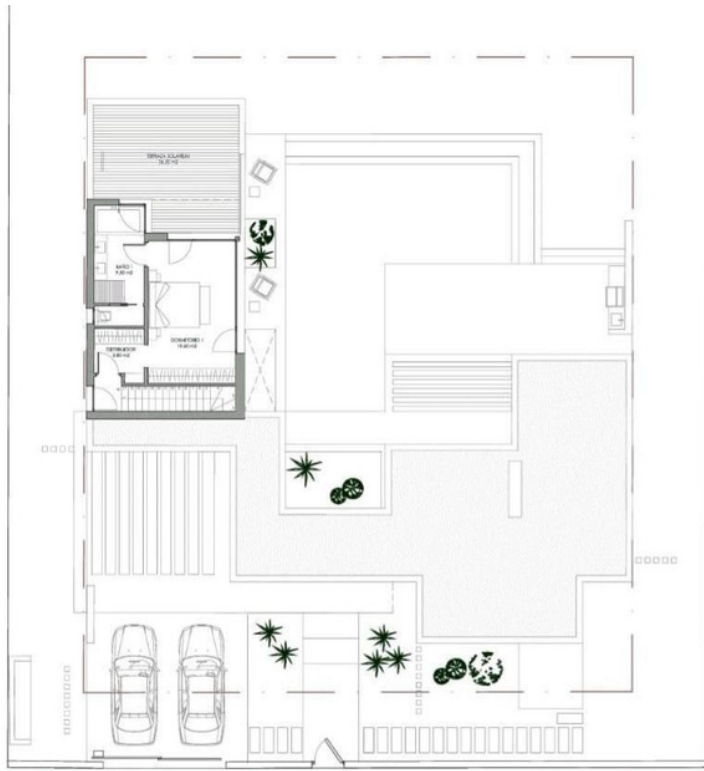
Коммунальные услуги

- ✓ Электричество
- ✓ Питьевая вода









0 1 2 3 4
ESCALA GRAFICA



PLANTA ALTA
SC CERRADA: 46 M2

