

Ref.-ID: MIBGR5141524

Calahonda

Апартамент

Коммунальные: 1,260 EUR /
год

ИБИ: 386 EUR / год

Мусор: 134 EUR / год



2



2



90 m2

This stunning and impeccably maintained apartment is perched in the upper part of Calahonda and boasts the most spectacular panoramic sea views in the entire development. It features two spacious bedrooms, two bathrooms (one en-suite), rustic-style ceramic flooring, a jacuzzi in the master bathroom, and a fully renovated and equipped kitchen with high-quality finishes. The property also includes a generous covered terrace, a laundry room, and a private rear patio. Everything is in perfect condition and ready to move into. The southeast-facing terrace is ideal for enjoying the morning sun and dining al fresco in the afternoon. From here, you'll enjoy sweeping views of the Mediterranean Sea, Gibraltar, and even the coast of Africa. The southwest-facing rear patio offers maximum privacy and sunshine from the afternoon until sunset – perfect for sunbathing in peace. Sold fully furnished and includes a private parking space. The gated community offers excellent security and features three stunning communal swimming pools with sea views and beautifully landscaped gardens. Located just a 7-minute drive from the beach and shopping areas of the urbanisation. An ideal apartment for those seeking peace and tranquillity in a lush green setting, with absolutely unbeatable sea views!

Расположение

- ✓ Город
- ✓ Рядом с гольф-полем
- ✓ Рядом с городом
- ✓ Урбанизация

Климат-контроль

- ✓ Кондиционер
- ✓ Кондиционер холодного воздуха

Сад

- ✓ Общественный

Категория

- ✓ Перепродажа

ОРИЕНТАЦИЯ

- ✓ Юго-запад

ВИД

- ✓ Море
- ✓ Панорамный

меры безопасности

- ✓ Огражденный комплекс
- ✓ Домофон
- ✓ Сигнализация

Состояние

- ✓ Отличное

Особенности

- ✓ Крытая терраса
- ✓ Встроенные шкафы
- ✓ Приватная терраса
- ✓ WiFi
- ✓ Подсобное помещение
- ✓ Ванная комната
- ✓ Двойные стеклопакеты

Парковка

- ✓ Приватная

бассейн

- ✓ Общий

Мебель

- ✓ По желанию

Коммунальные услуги

- ✓ Электричество
- ✓ Питьевая вода



















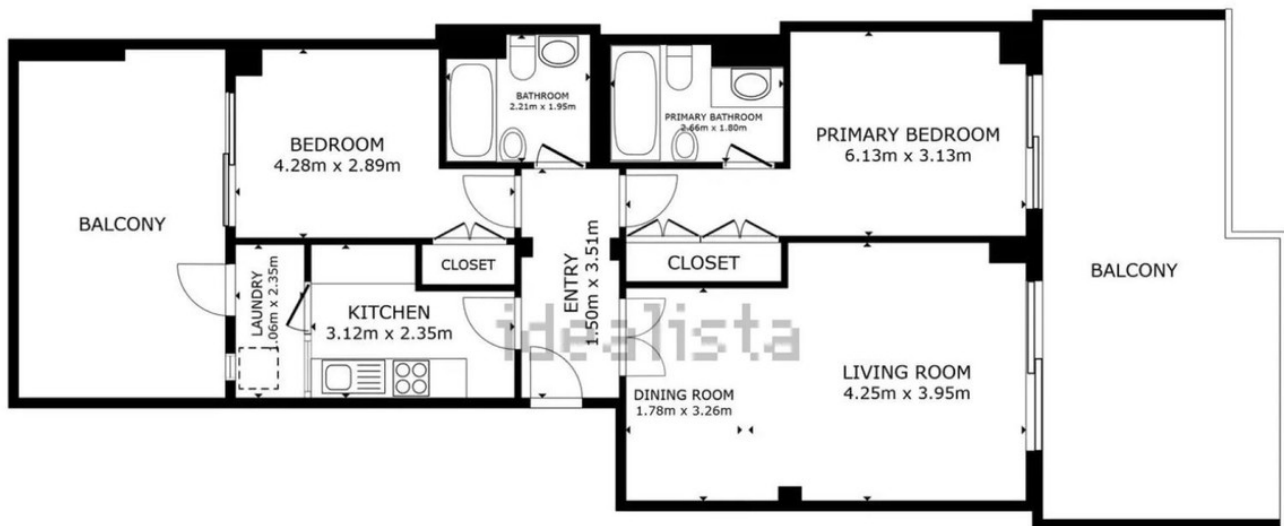












FLOOR PLAN

GROSS INTERNAL AREA
 FLOOR PLAN 76.0 m²
 EXCLUDED AREAS : BALCONY 25.0 m² BALCONY 16.9 m²
 TOTAL : 76.0 m²
 SIZES AND DIMENSIONS ARE APPROXIMATE, ACTUAL MAY VARY.