

Ref.-ID: MIBGR5257636

Benalmadena Costa

Апартамент

Коммунальные: 1,068 EUR /  
год

ИБИ: 570 EUR / год

Мусор: 164 EUR / год



3



2



95 m2

Welcome to this attractive penthouse in Benalmádena Costa, with tourist license, ideally located just 500 meters from the beach and approximately 2 kilometers from the charming Benalmádena Marina, Puerto Marina. The property enjoys a prime location within walking distance to restaurants, shops, cafés, and all amenities, making it ideal as a permanent residence, holiday home, or investment. The apartment is distributed over two levels with a well-planned layout. On the entrance level, you are welcomed by an open-plan kitchen and living area, creating a bright and social living space. This floor also features a cozy southwest-facing balcony, perfect for enjoying the evening sun, as well as two bedrooms and one bathroom. Upstairs, you will find a spacious master bedroom with an en-suite bathroom. The current owners have converted part of the bedroom into a storage room, which also has a window and can easily be used as an additional bedroom, office, or guest room if desired. This level also offers a larger southwest-facing terrace, ideal for sunbathing, outdoor dining, and relaxation. Both levels offer stunning views of the sea, mountains, and the city. Despite its central location, the area is quiet and peaceful, providing a comfortable living environment year-round. The property also benefits from a tourist rental license, currently used for short-term rentals, making it a highly attractive investment opportunity. A unique chance to own a penthouse near the beach in Benalmádena Costa with sea views, terraces, an excellent location, and strong rental potential.

#### Расположение

- ✓ Рядом с портом
- ✓ Рядом с магазинами
- ✓ Рядом с морем
- ✓ Рядом с городом
- ✓ Близко к школам
- ✓ Рядом с портом

#### Климат-контроль

- ✓ Кондиционер
- ✓ Кондиционер холодного воздуха
- ✓ Кондиционер горячего воздуха

#### Кухня

- ✓ Полностью оборудованная

#### ОРИЕНТАЦИЯ

- ✓ Юго-запад
- ✓ Запад

#### ВИД

- ✓ Море
- ✓ Горы
- ✓ Сельская местность

#### Сад

- ✓ Общественный

#### Состояние

- ✓ Хорошее

#### Особенности

- ✓ Лифт
- ✓ Рядом с транспортом
- ✓ Приватная терраса
- ✓ WiFi
- ✓ Ванная комната
- ✓ Двойные стеклопакеты

#### меры безопасности

- ✓ Огражденный комплекс
- ✓ Охрана 24 часа
- ✓ Сейф

#### бассейн

- ✓ Общий
- ✓ Детский бассейн

#### Мебель

- ✓ Полностью меблированный

#### Парковка

- ✓ Подземная
- ✓ Гараж
- ✓ С навесом
- ✓ Приватная

#### Категория

- ✓ Дома для отдыха
- ✓ Инвестиции
- ✓ Перепродажа

































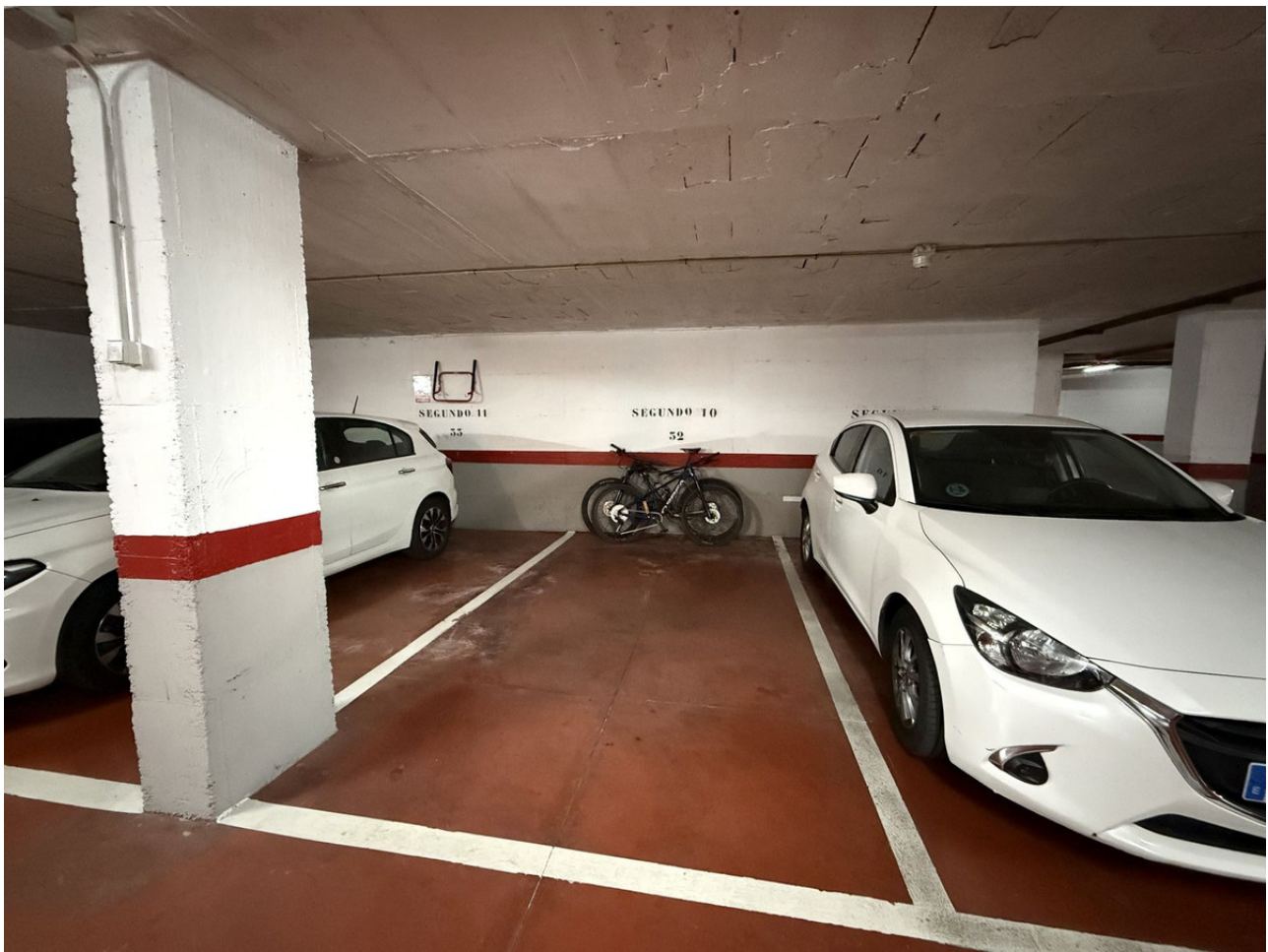




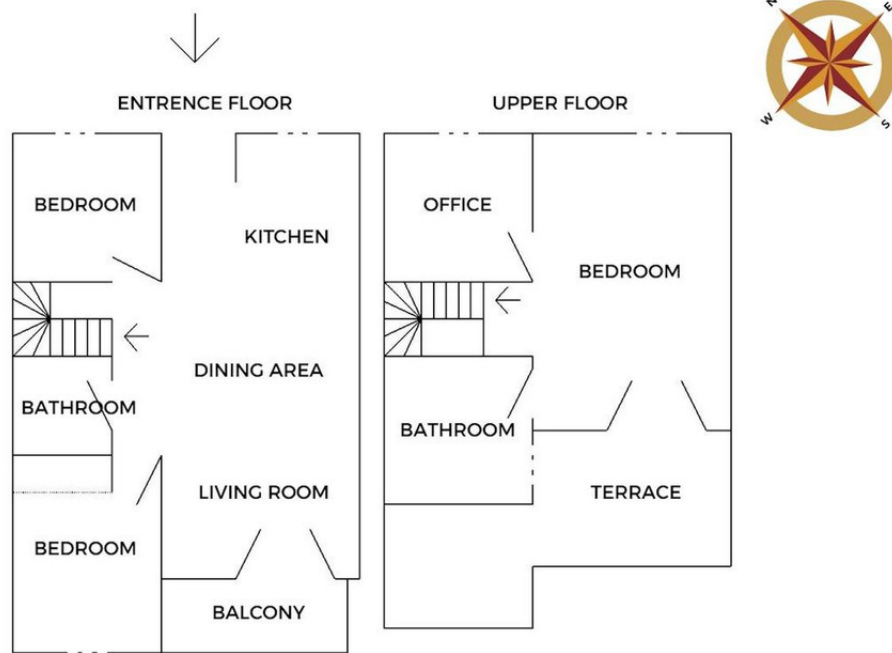












Measurements were taken on site with a GLM 50-27 CG PROFESSIONAL.  
Adjustments were done during drafting and not based on final measurements.