

Ref.-ID: MIBGR5274790

Benalmadena

Апартамент

Коммунальные: 6,600 EUR / год

ИБИ: 1,177 EUR / год

Мусор: 166 EUR / год



3



3



313 m2

Penthouse with sea views, private jacuzzi and no direct neighbours - rare position in Higueroń A rare opportunity to secure a truly private penthouse in the sought-after Higueroń area, with open sea views and no direct neighbours - a combination that is increasingly hard to find. The property offers 3 bedrooms and 3 bathrooms, finished in modern, high-quality materials, with a well-designed layout separating living and sleeping areas. The bright open-plan living space connects directly to spacious terraces through large sliding doors, creating a seamless indoor-outdoor flow. From here, you enjoy unobstructed views towards the Mediterranean and the Fuengirola coastline. A key feature is the outdoor space, designed for both relaxation and entertaining. The terrace includes a private jacuzzi and direct access to the communal pool, giving the property a unique resort-style feel rarely available in penthouses. The elevated position ensures excellent sun conditions, privacy and open views throughout the day. Located just minutes from Higueroń Resort, with access to gym, spa, padel, restaurants and services, while still offering a quiet and secluded setting. Includes 2 garage spaces and storage. Ideal as a high-end holiday home or investment with strong rental appeal. Contact for private viewing.

Расположение

- ✓ Рядом с гольф-полем
- ✓ Рядом с морем
- ✓ Урбанизация

Климат-контроль

- ✓ Кондиционер
- ✓ Кондиционер холодного воздуха
- ✓ Кондиционер горячего воздуха

меры безопасности

- ✓ Огражденный комплекс
- ✓ Домофон
- ✓ Сигнализация

ОРИЕНТАЦИЯ

- ✓ Юг

ВИД

- ✓ Море
- ✓ Порт
- ✓ Бассейн

Парковка

- ✓ Подземная
- ✓ Гараж
- ✓ С навесом

Состояние

- ✓ Отличное

Особенности

- ✓ Крытая терраса
- ✓ Лифт
- ✓ Встроенные шкафы
- ✓ Рядом с транспортом
- ✓ Приватная терраса
- ✓ WiFi
- ✓ Падл теннис
- ✓ Кладовка
- ✓ Джакузи

Категория

- ✓ Перепродажа

бассейн

- ✓ Общий

Кухня

- ✓ Полностью оборудованная





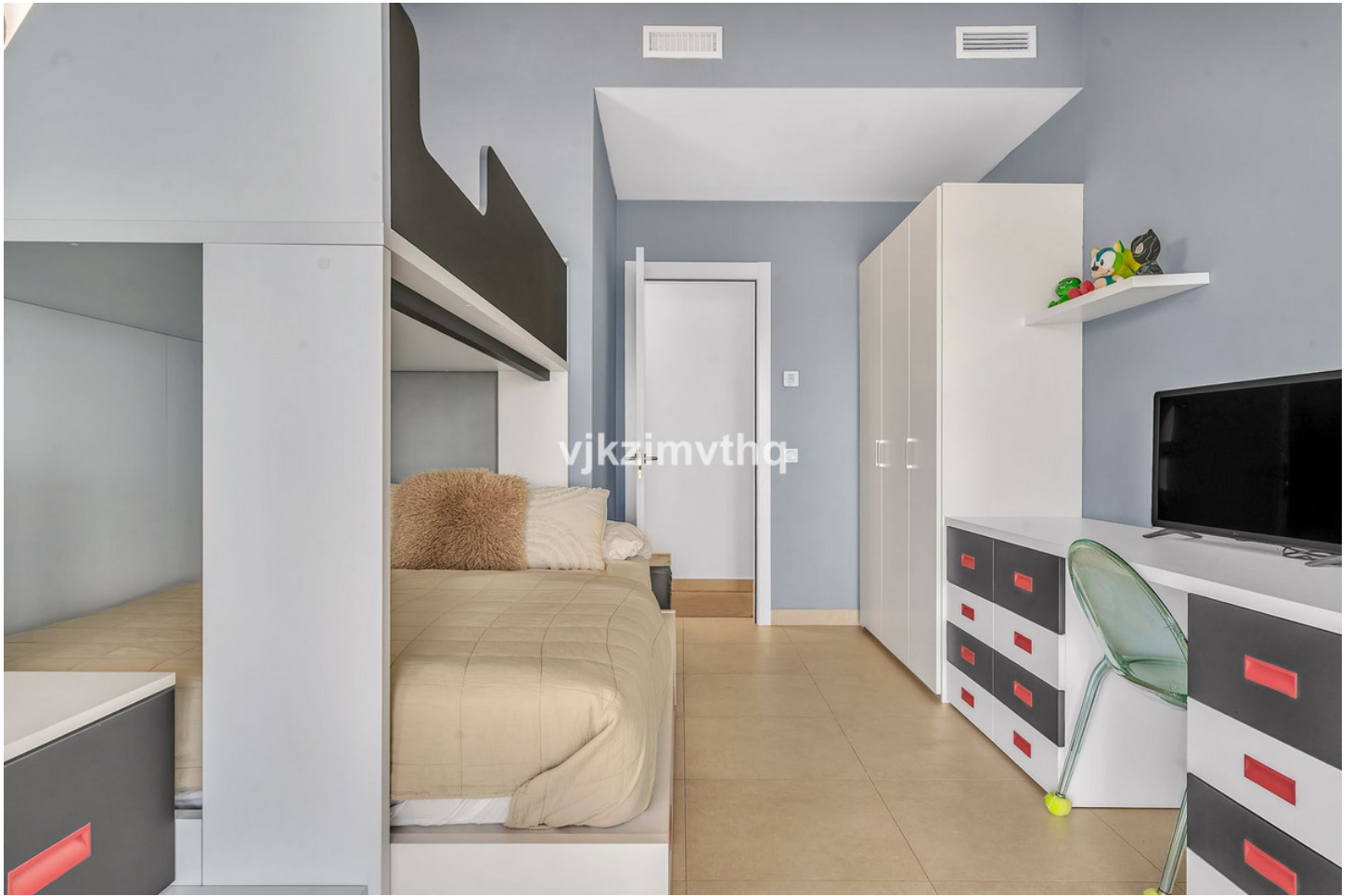












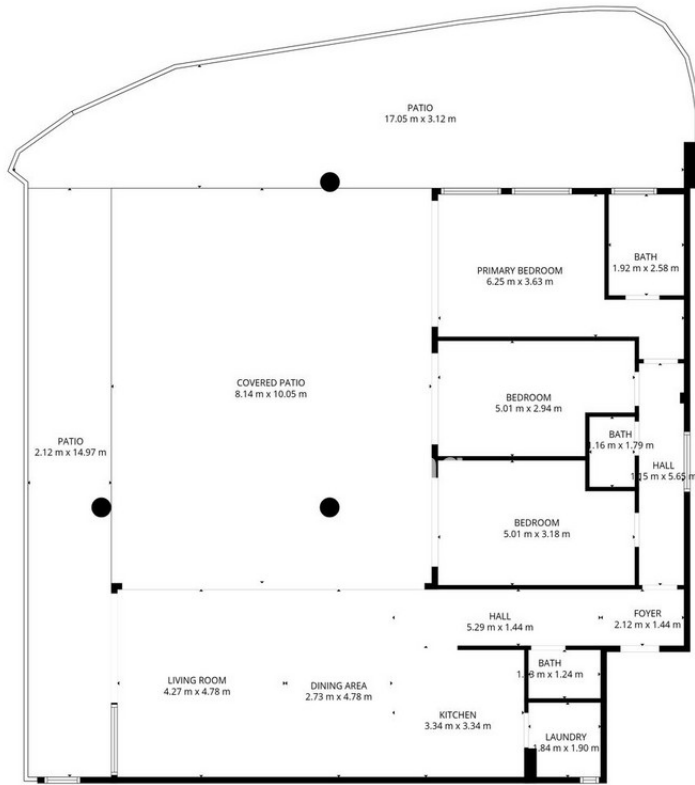












TOTAL: 125 m2
 1st floor: 125 m2
 EXCLUDED AREAS: COVERED PATIO: 82 m2, PATIO: 91 m2, WALLS: 10 m2

FLOOR PLAN CREATED BY CUBICASA APP. MEASUREMENTS DEEMED HIGHLY RELIABLE BUT NOT GUARANTEED.







