

**Ref.-ID: MIBGR5304907**

**Benalmadena**

**Участок**



**2000 m2**

Magnificent 2,000 m<sup>2</sup> plot with stunning sea views, located in Torremuelle, one of the most exclusive and peaceful residential areas between Fuengirola and Benalmádena, just 600 metres from the beach. LICENCE GRANTED The plot is sold with a project for the construction of a high-end detached house, distributed over three floors above ground (the top floor being under the roof) and two basement floors, designed to offer maximum comfort, privacy and quality of life. The project includes: Basement -2: Garage for four vehicles, storage room, workshop, toilet and direct connection to the lift. Basement -1: Spectacular leisure area with gym, cinema room, games room, changing room, wine cellar, toilet and laundry room. Ground floor: Spacious living-dining room with open kitchen and large windows connecting to the outdoor terrace, as well as a guest toilet. First floor: Three bedrooms, all with en-suite bathrooms. Attic floor: Exclusive master suite occupying the entire floor, ensuring maximum privacy. A unique opportunity to develop a contemporary villa in a privileged location on the Costa del Sol. About Torremuelle Torremuelle is a well-established residential area, highly valued for its tranquillity, privacy and natural surroundings, with excellent road and commuter train connections. It has supermarkets, international schools (such as the British College), restaurants, green areas and all the necessary services just a few minutes away. Its proximity to the sea Translated with DeepL.com (free version)

**Расположение**

- ✓ Город
- ✓ Коммерческая зона
- ✓ На побережье
- ✓ Рядом с портом
- ✓ Близко к школам

**Категория**

- ✓ Выгодное предложение
- ✓ Инвестиции
- ✓ Перепродажа

**ОРИЕНТАЦИЯ**

- ✓ Восток
- ✓ Юг
- ✓ Запад

**Состояние**

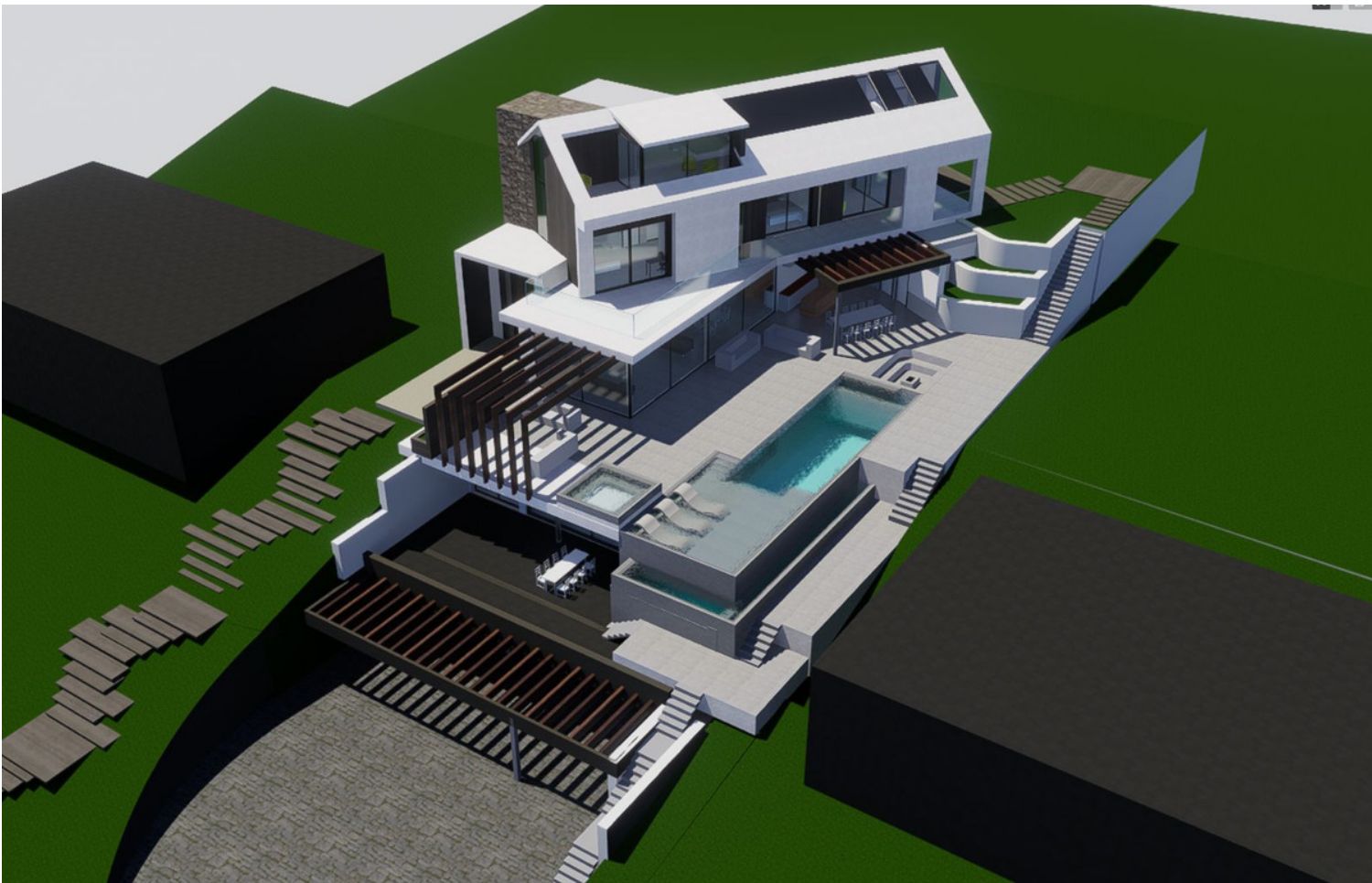
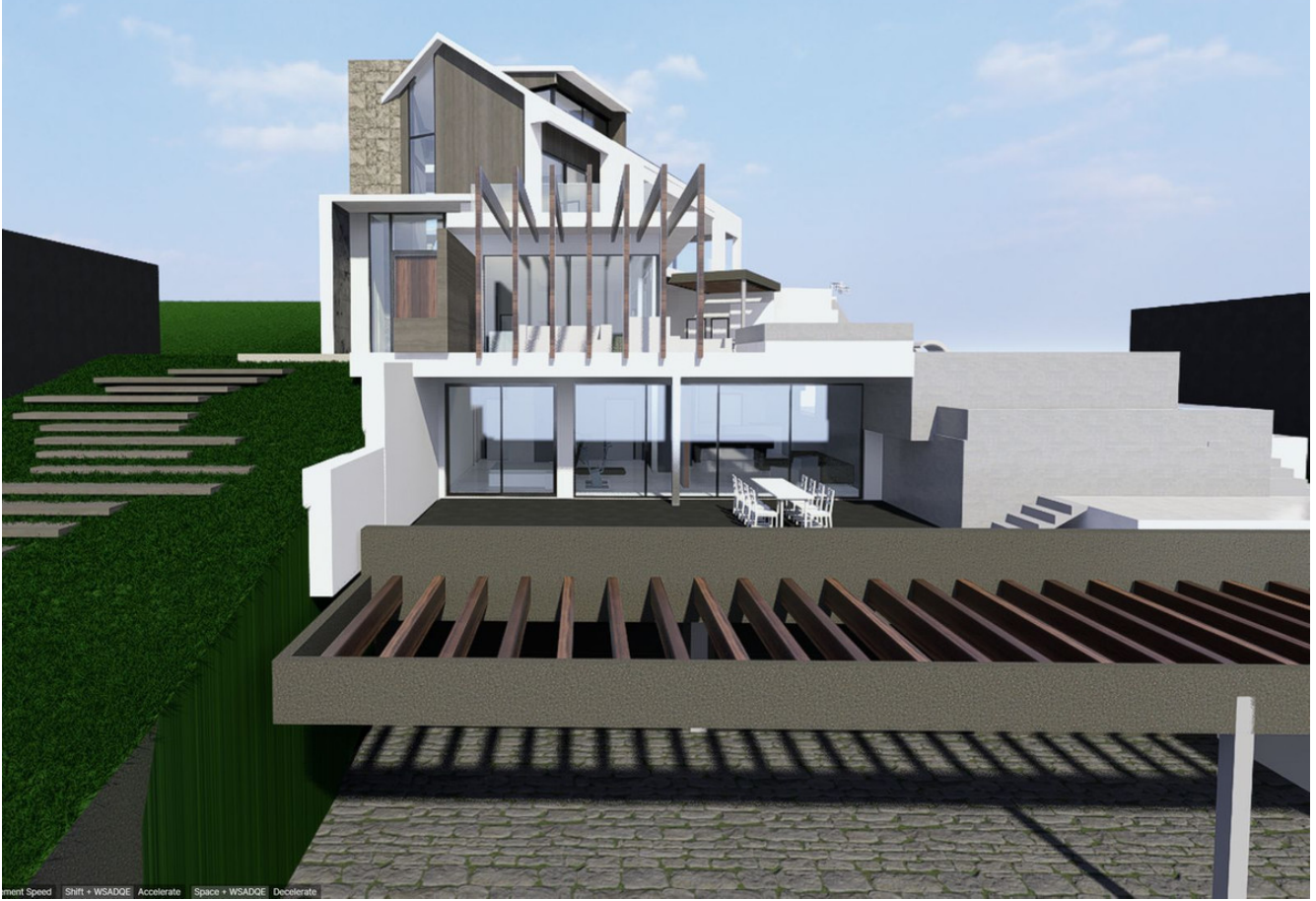
- ✓ Отличное

**ВИД**

- ✓ Море
- ✓ Горы
- ✓ Порт
- ✓ Сельская местность







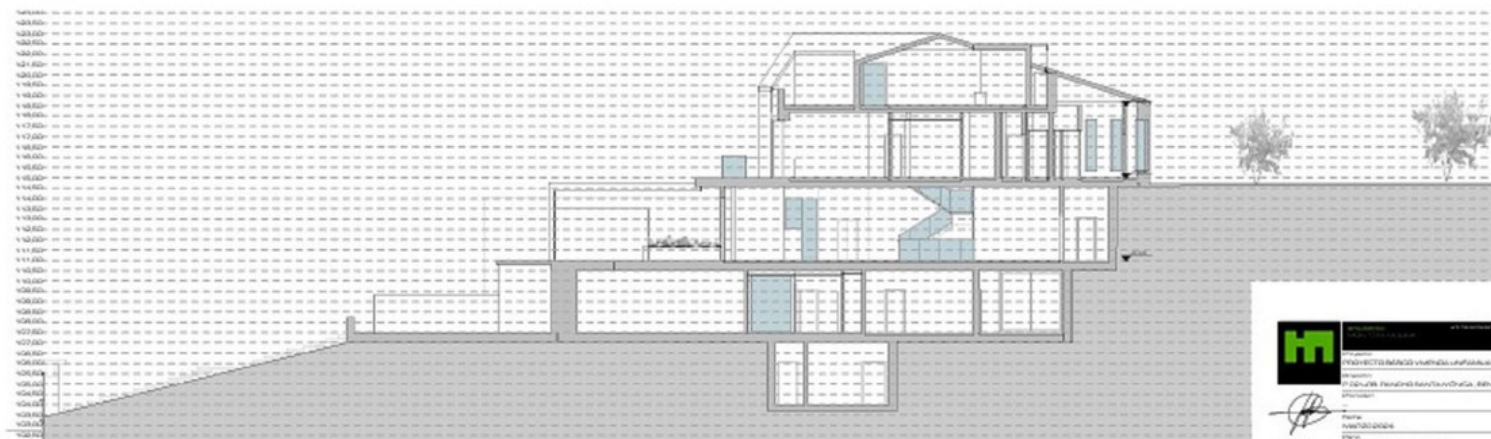
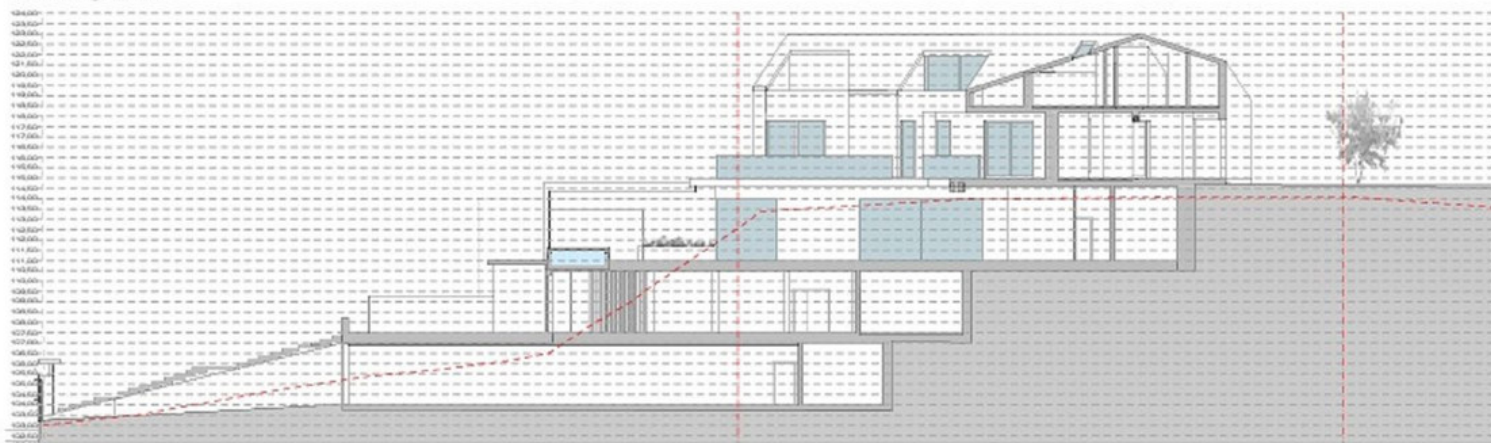








Sección Longitudinal S-1



INSTITUTO TECNOLÓGICO DE CALZAS  
 DEPARTAMENTO DE ARQUITECTURA  
 CARRILLO, Pineda y Rodríguez  
 Arquitectos  
 Mónica Rodríguez  
 Mónica Rodríguez





