

**Ref.-ID: MIBGR5304922**

**Mijas Costa**

**Апартамент**

**Коммунальные: 3,252 EUR / год**



This is a brand-new property that has never been lived in, offering the financial advantage of paying 7% transfer tax instead of 10% VAT. The property is located in El Chaparral, within the new and exclusive Myramar Costa development, an emerging residential area known for its quality surroundings and excellent connectivity. It features two private terraces with a total surface area of 110 m<sup>2</sup>, providing the opportunity to enjoy sunshine throughout the day. The main terrace and garden, accessed directly from the living area, benefit from a south-west orientation, while the rear terrace is east-facing, ensuring natural light at different times of the day. The property is within walking distance of the beach and local shops and offers excellent access to the main highway, allowing easy travel along the coast. It is just a 5-minute drive to both La Cala de Mijas and Fuengirola. Residents have access to high-quality communal facilities, including a fitness room, swimming pools, a gourmet social area, paddle tennis court, landscaped gardens, and a children's playground. The property is also located very close to El Chaparral Golf Course, making it an ideal option for both permanent living and investment. \*The property is sold unfurnished, the photos that show furniture is virtual staging to give you an idea of how it could be decorated\*\*

**Расположение**

- ✓ На побережье
- ✓ Рядом с гольф-полем
- ✓ Рядом с магазинами
- ✓ Рядом с морем

**Особенности**

- ✓ Лифт
- ✓ Встроенные шкафы
- ✓ Рядом с транспортом
- ✓ Приватная терраса
- ✓ Тренажерный зал
- ✓ Теннисный корт
- ✓ Кладовка
- ✓ Ванная комната
- ✓ Доступ для инвалидов
- ✓ Бесплатный автобус
- ✓ Оптическое волокно

**Парковка**

- ✓ Гараж
- ✓ Приватная

**Состояние**

- ✓ Отличное

**Кухня**

- ✓ Полностью оборудованная

**бассейн**

- ✓ Общий

**Сад**

- ✓ Общественный

**Климат-контроль**

- ✓ Кондиционер
- ✓ Центральное отопление

**меры безопасности**

- ✓ Огражденный комплекс







































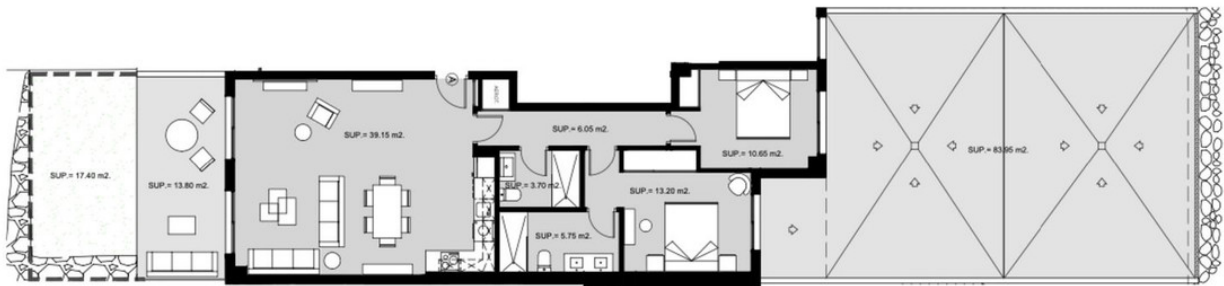












0 0.5 1 2 3  
ESCALA GRÁFICA