

**Ref.-ID: MIBGR5330638**

**Benalmadena Costa**

**Апартамент**

**Коммунальные: 2,988 EUR / год**

**ИБИ: 1,066 EUR / год**



Spacious Apartment with Private Garden A Beautiful Home Less than a 10-minute stroll from the beach, this beautiful three bedroom, two bathroom apartment offers a modern open plan layout. The interior is carefully styled with a calm and elegant feel, creating a home that is both comfortable and welcoming. One of the bedrooms features an en suite bathroom and direct access to the terrace, allowing you to step outside and enjoy the outdoor space from the privacy of your own room. Generous Terrace and Private Garden One of the most attractive features of this apartment is the spacious terrace together with a private garden with grass. This outdoor area adds an extra dimension to the home and provides plenty of space to enjoy the sun and the pleasant climate throughout the year. Since the apartment is built on a terraced level, the terrace and garden are elevated above ground level, giving plenty of privacy. The terrace is divided into a comfortable lounge area with a large sofa and a dining area with a table, perfect for sunny mornings and long evenings outdoors. The private lawn gives the home a sense of openness while still offering privacy. Modern and Well Maintained Community The property is part of a well maintained residential community that offers several high quality facilities for residents. These include a fully equipped gym, a dedicated yoga room, a sauna, and a large outdoor swimming pool with views over the mountains. The surroundings are calm and well cared for, creating a pleasant and relaxing environment. Sports and Active Lifestyle Nearby For those who enjoy staying active, the location is particularly convenient. Padel and tennis courts are located directly next to the building, making it easy to include sports and outdoor activities in everyday life. Practical Location Details - Approximately 500 meters to the beach - Supermarket and several restaurants approximately 200 meters away - Arroyo de la Miel train station approximately 1.8 kilometers - Padel and tennis courts located directly next to the property

**Расположение**

- ✓ Рядом с гольф-полем
- ✓ Рядом с портом
- ✓ Рядом с магазинами
- ✓ Рядом с морем
- ✓ Рядом с городом
- ✓ Близко к школам
- ✓ Рядом с портом

**Климат-контроль**

- ✓ Кондиционер
- ✓ Кондиционер холодного воздуха
- ✓ Кондиционер горячего воздуха
- ✓ Центральное отопление

**Кухня**

- ✓ Полностью оборудованная

**Коммунальные услуги**

- ✓ Электричество

**ОРИЕНТАЦИЯ**

- ✓ Восток
- ✓ Юго-восток

**ВИД**

- ✓ Горы
- ✓ Сад

**Сад**

- ✓ Приватный

**Категория**

- ✓ Инвестиции
- ✓ Элитная

**Состояние**

- ✓ Отличное

**Особенности**

- ✓ Крытая терраса
- ✓ Лифт
- ✓ Встроенные шкафы
- ✓ Рядом с транспортом
- ✓ Приватная терраса
- ✓ Тренажерный зал
- ✓ Сауна
- ✓ Кладовка
- ✓ Подсобное помещение
- ✓ Ванная комната
- ✓ Мраморные полы
- ✓ Двойные стеклопакеты

**меры безопасности**

- ✓ Огражденный комплекс
- ✓ Электрические жалюзи
- ✓ Домофон

**бассейн**

- ✓ Общий

**Мебель**

- ✓ Без мебели

**Парковка**

- ✓ Подземная
- ✓ Гараж
- ✓ Более чем один





























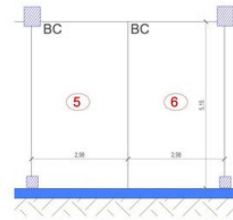
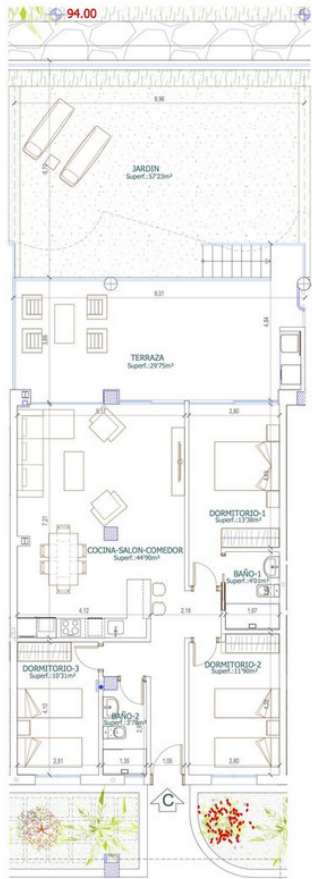








LAS PALMERAS  
25



APARCAMIENTOS Y TRASTERO

SUPERFICIE CONSTRUIDA VIVIENDA	
SUPERFICIE DE VIVIENDA	98.08 m <sup>2</sup>
SUPERFICIE DE TERRAZA	29.75 m <sup>2</sup>
SUPERFICIE TOTAL	127.83 m <sup>2</sup>
SUPERFICIE ÚTIL ANEJOS	
SUP. APARCAMIENTO Nº05 (Garaje-2)	15.24 m <sup>2</sup>
SUP. APARCAMIENTO Nº06 (Garaje-2)	15.27 m <sup>2</sup>
SUP. TRASTERO Nº04 (Garaje-3)	11.10 m <sup>2</sup>
SUPERFICIE TOTAL	41.61 m <sup>2</sup>

VIVIENDA "C" NIVEL BAJO



Urb. Reserva del Higuero  
Avenida del Higuero S/N - Complejo Rivera  
Casa N°1 - 29639 Buzadillos (Málaga)  
Tel. (+34) 952 569 091  
Móv. (+34) 669 404 309  
ventas@reservadelhiguero.com  
www.reservadelhiguero.com

Las Superficies expresadas, al dimensionarse de plano, la situación de los muros y cimientos de verificación podrán experimentar leves variaciones durante la ejecución de la obra por imperfecciones técnicas, constructivas, materiales.  
Los planos sólo son válidos en la medida de lo indicado. El contenido es meramente informativo. Algunos datos de planta y distribución de espacios reservados para otros futuros edificios.