

Ref.-ID: MIBGR5337538

Marbella

Дом



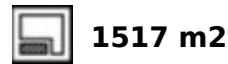
6



7.5



640 m2



1517 m2

Perched on the coast, in the tranquil hills of La Mairena, this contemporary villa offers a balanced blend of architectural elegance, privacy, and expansive views of the Mediterranean. Surrounded by protected natural landscapes, the residence enjoys a serene setting that feels removed from the bustle of Marbella, while being just minutes away from the beaches of Elviria and the city's dynamic lifestyle. Recently rebuilt under the supervision of the award-winning design and construction studio Roomzly, the villa has been conceived to integrate contemporary architecture, comfort, and a lifestyle centered on light, space, and well-being. With approximately 640 m<sup>2</sup> indoors, the home is organized into spacious open-plan areas framed by floor-to-ceiling windows capturing panoramic views of the Mediterranean and the surrounding mountains. At the heart of the house is a thoughtfully designed living area, where natural light and selected materials create an elegant and relaxing atmosphere. The custom-designed kitchen, equipped with Gaggenau appliances, seamlessly integrates with the dining and living areas, ideal for both daily living and entertaining guests. The property features six generously sized bedrooms, each with an en-suite bathroom, offering comfort and privacy for residents and guests. The master suite is envisioned as a true private retreat, with a walk-in closet and a spa-inspired bathroom that includes a sauna, steam room, and hydrotherapy bathtub.

#### Расположение

- ✓ Рядом с гольф-полем
- ✓ Близко к школам

#### бассейн

- ✓ Приватный

#### Климат-контроль

- ✓ Кондиционер
- ✓ Центральное отопление

#### ВИД

- ✓ Море
- ✓ Горы
- ✓ Гольф
- ✓ Панорамный

#### Особенности

- ✓ Встроенные шкафы
- ✓ Приватная терраса
- ✓ Тренажерный зал
- ✓ Сауна
- ✓ Кладовка
- ✓ Ванная комната
- ✓ Двойные стеклопакеты
- ✓ Детский сад

#### Кухня

- ✓ Полностью оборудованная

#### Сад

- ✓ Приватный

#### меры безопасности

- ✓ Электрические жалюзи

#### Парковка

- ✓ Гараж
- ✓ С навесом



















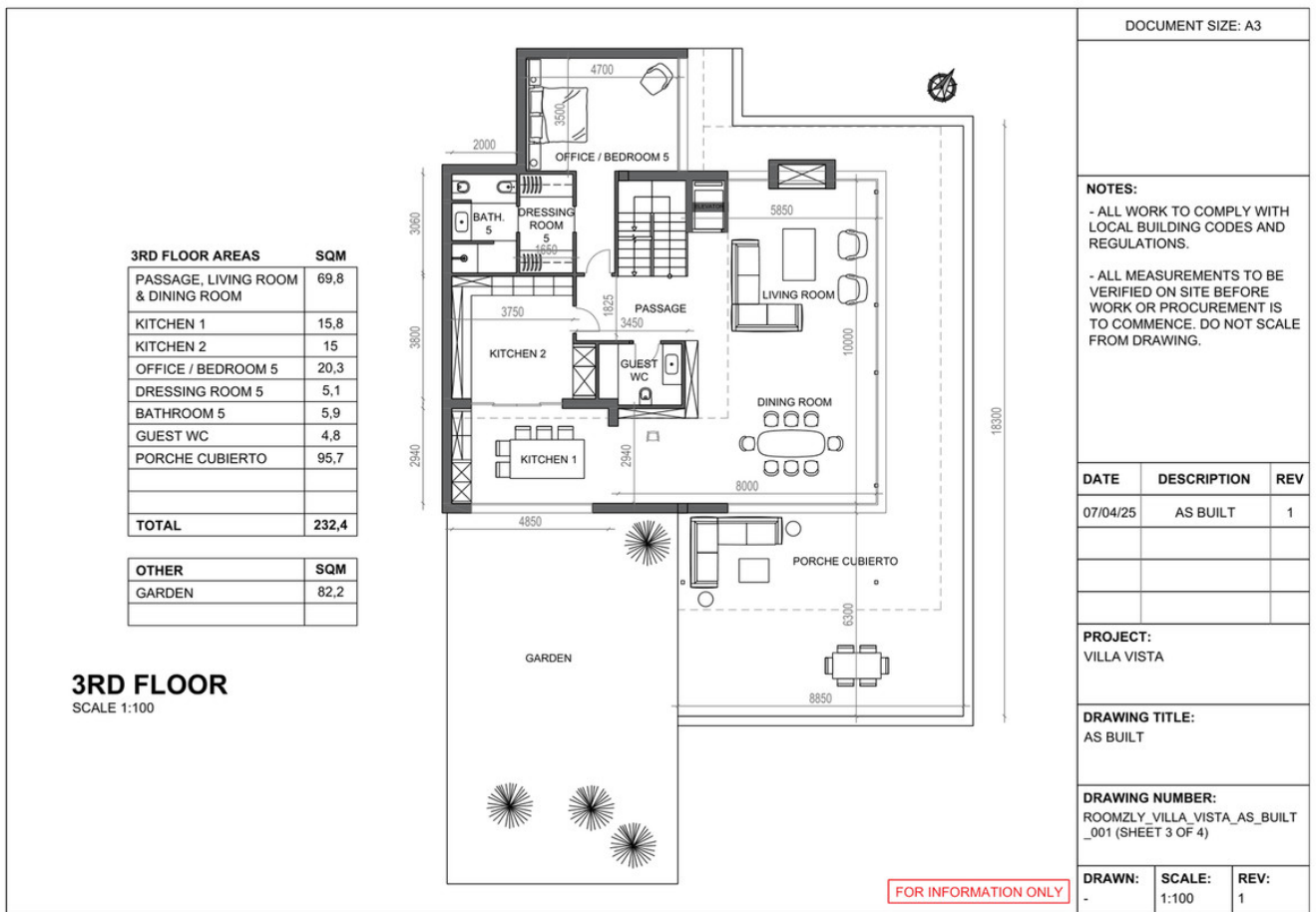










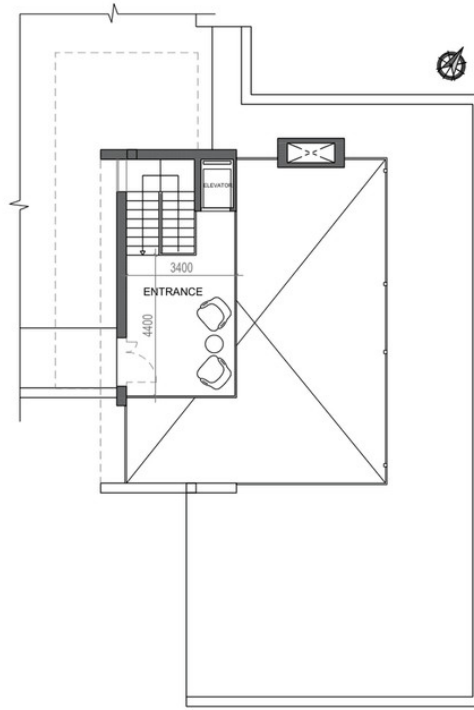




4TH FLOOR AREAS	SQM
ENTRANCE	16.8
<b>TOTAL</b>	<b>16.8</b>

OTHER	SQM
STAIRCASE LEVEL 1-4	19.2
ELEVATOR	1

**4TH FLOOR**  
SCALE 1:100



**NOTES:**  
 - ALL WORK TO COMPLY WITH LOCAL BUILDING CODES AND REGULATIONS.  
 - ALL MEASUREMENTS TO BE VERIFIED ON SITE BEFORE WORK OR PROCUREMENT IS TO COMMENCE. DO NOT SCALE FROM DRAWING.

DATE	DESCRIPTION	REV
07/04/25	AS BUILT	1

**PROJECT:**  
VILLA VISTA

**DRAWING TITLE:**  
AS BUILT

**DRAWING NUMBER:**  
ROOMZLY\_VILLA\_VISTA\_AS\_BUILT\_001 (SHEET 4 OF 4)

DRAWN:	SCALE:	REV:
-	1:100	1

FOR INFORMATION ONLY