

Ref.-ID: MIBGR5353273

Riviera del Sol

Дом

Коммунальные: 2,496 EUR /  
год

ИБИ: 632 EUR / год

Мусор: 135 EUR / год



Stunning two-bedroom corner townhouse ideally positioned on the second line of a beachfront complex in Riviera del Sol, offering breathtaking panoramic views of the sea and coastline. The property is distributed over two levels. On the ground floor, you'll find a bright open-plan living and dining area with a fully fitted kitchen, along with a guest toilet. From here, there is direct access to a spacious, sunny terrace facing south and west, perfect for enjoying the afternoon sun, complete with a built-in barbecue. At the entrance, a charming covered porch welcomes you into the home. Upstairs, there are two generous double bedrooms, both with fitted wardrobes and access to a terrace boasting magnificent sea views. This level also features a large bathroom, which offers the potential to be divided into two, allowing for the creation of an additional en-suite bathroom. Set within a secure gated community, the property benefits from communal parking, beautifully maintained gardens, two swimming pools, and access to a garden snack bar. There is also direct access to the beachfront promenade and the beach itself. Ideally located within walking distance of restaurants, supermarkets, bars, shops, a beach club, fitness centre, and public transport, this property is perfect as a holiday home, rental investment, or permanent residence. Sold furnished according to inventory.

**Расположение**

- ✓ Первая линия пляжа
- ✓ На побережье
- ✓ Рядом с гольф-полем
- ✓ Рядом с магазинами
- ✓ Рядом с морем
- ✓ Рядом с городом

**Климат-контроль**

- ✓ Кондиционер
- ✓ Камин

**Кухня**

- ✓ Кухня-зал

**ОРИЕНТАЦИЯ**

- ✓ Юго-запад

**ВИД**

- ✓ Море
- ✓ Бассейн

**Сад**

- ✓ Общественный

**Состояние**

- ✓ Хорошее

**Особенности**

- ✓ Встроенные шкафы
- ✓ Рядом с транспортом
- ✓ Приватная терраса
- ✓ WiFi
- ✓ Барбекю
- ✓ Двойные стеклопакеты

**меры безопасности**

- ✓ Огражденный комплекс
- ✓ Сигнализация

**бассейн**

- ✓ Общий

**Мебель**

- ✓ Полностью меблированный

**Категория**

- ✓ Первая линия пляжа











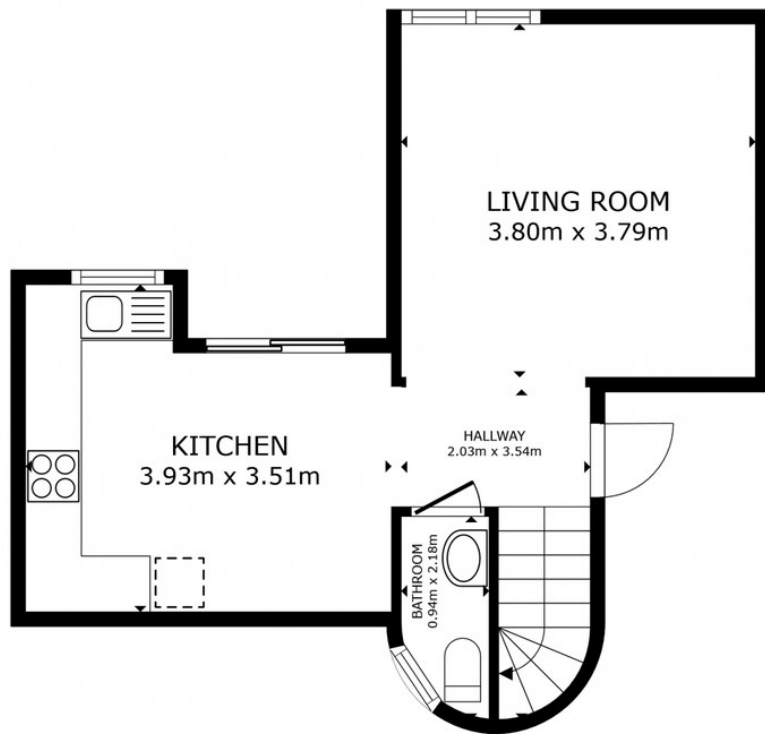
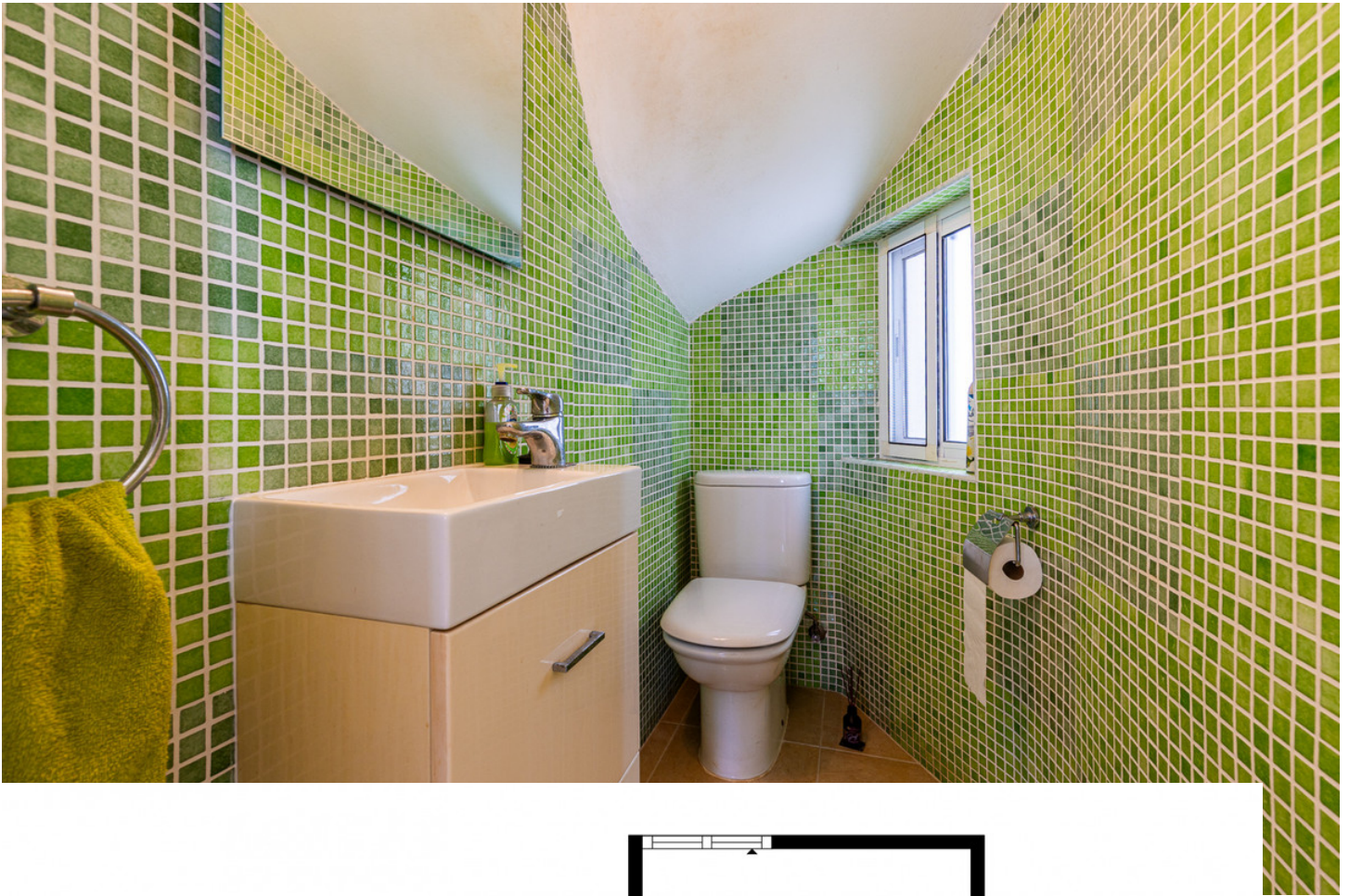






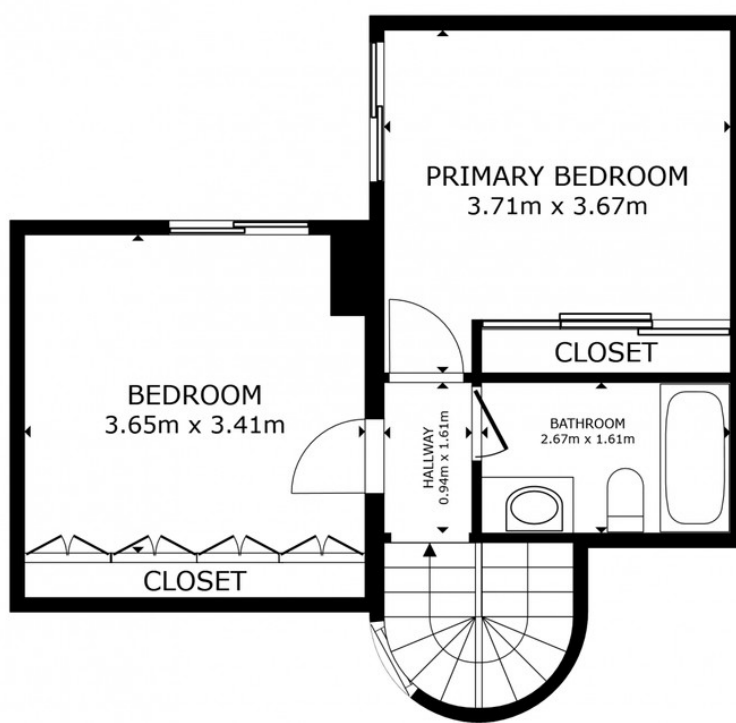






FLOOR 1

SIZES AND DIMENSIONS ARE APPROXIMATE, ACTUAL MAY VARY.



FLOOR 2

SIZES AND DIMENSIONS ARE APPROXIMATE, ACTUAL MAY VARY.









