

Ref.-ID: MIBGR5353453

Coín

Дом

ИБИ: 524 EUR / год

Мусор: 134 EUR / год



3



2



151 m2



4594 m2

Looking for peace and space, yet close to everything? This detached country house is the perfect blend of rural living and modern convenience. Located just a 5-minute drive from the vibrant town of Coín and only 30 minutes from Málaga city and the airport, it offers an ideal balance between tranquillity and accessibility. Inside, the home welcomes you with a bright, open-plan living, dining, and kitchen area – perfect for family life and entertaining. On the ground floor, you'll find two comfortable bedrooms and a full bathroom, while upstairs is reserved for a private master suite with a generous bedroom and a spacious ensuite bathroom. Step outside and enjoy your very own swimming pool, brick-built barbecue area, and storeroom, which is everything you need for long summer days with family and friends. This is the kind of home that gives you room to breathe, space to grow, and a lifestyle to enjoy. The property sits on 1,500m<sup>2</sup> of land directly around the house, with an additional 3,000m<sup>2</sup> plot just across the road. This extra land offers exciting potential – whether you dream of keeping a horse, growing your own fruit trees, or creating a hobby garden. Mains water and electricity connected. Plenty of space for country living. A short drive to shops, restaurants, and amenities.

**Расположение**

- ✓ Загородный
- ✓ Рядом с городом

**Климат-контроль**

- ✓ Кондиционер
- ✓ Камин

**Кухня**

- ✓ Полностью оборудованная

**Категория**

- ✓ Перепродажа

**ОРИЕНТАЦИЯ**

- ✓ Юг

**ВИД**

- ✓ Сельская местность

**Сад**

- ✓ Приватный

**Состояние**

- ✓ Хорошее

**Особенности**

- ✓ Крытая терраса
- ✓ Встроенные шкафы
- ✓ Приватная терраса
- ✓ Кладовка
- ✓ Ванная комната
- ✓ Двойные стеклопакеты

**Парковка**

- ✓ Открытая
- ✓ Более чем один
- ✓ Приватная

**бассейн**

- ✓ Приватный

**Мебель**

- ✓ По желанию

**Коммунальные услуги**

- ✓ Электричество
- ✓ Питьевая вода



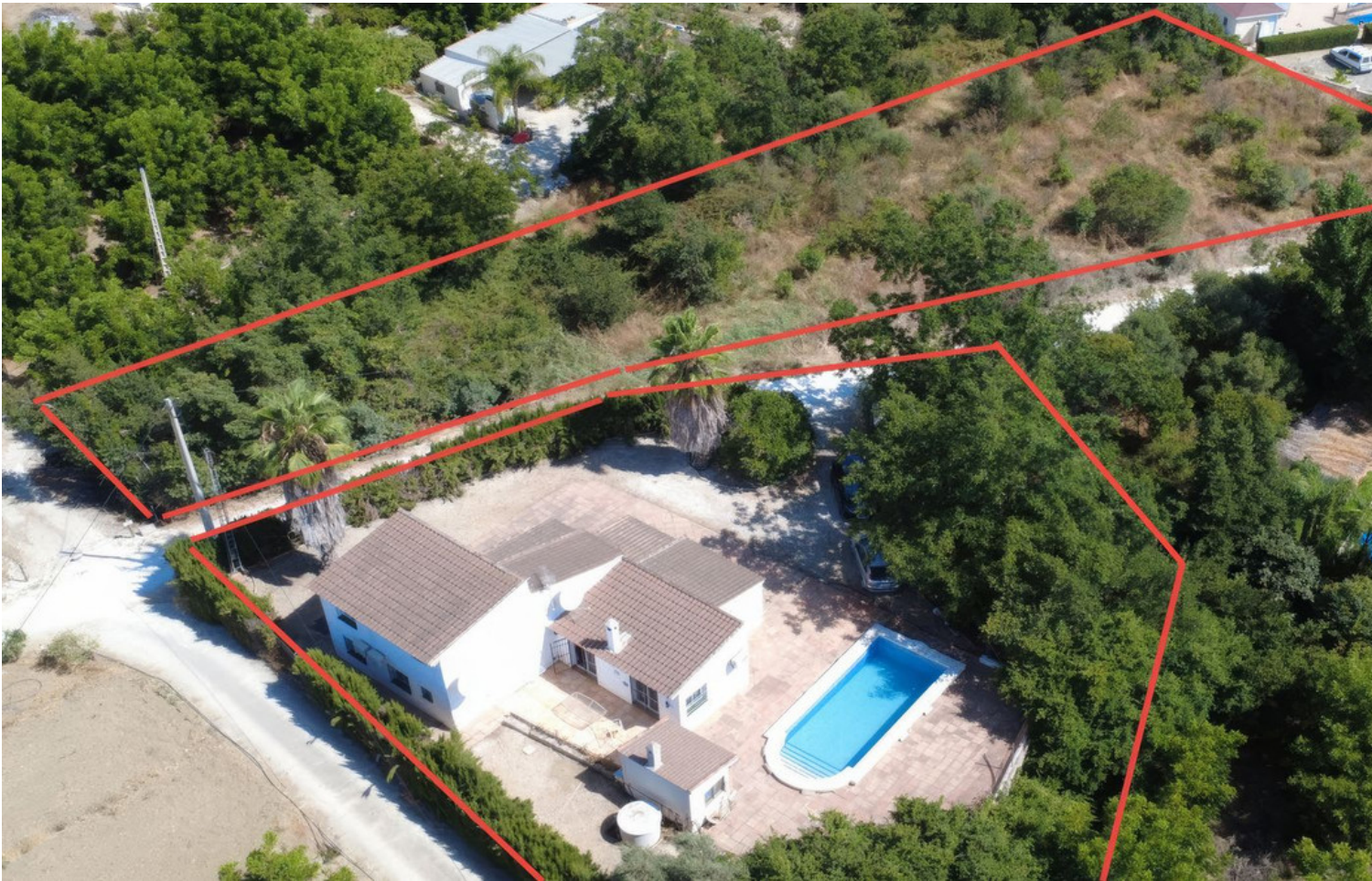








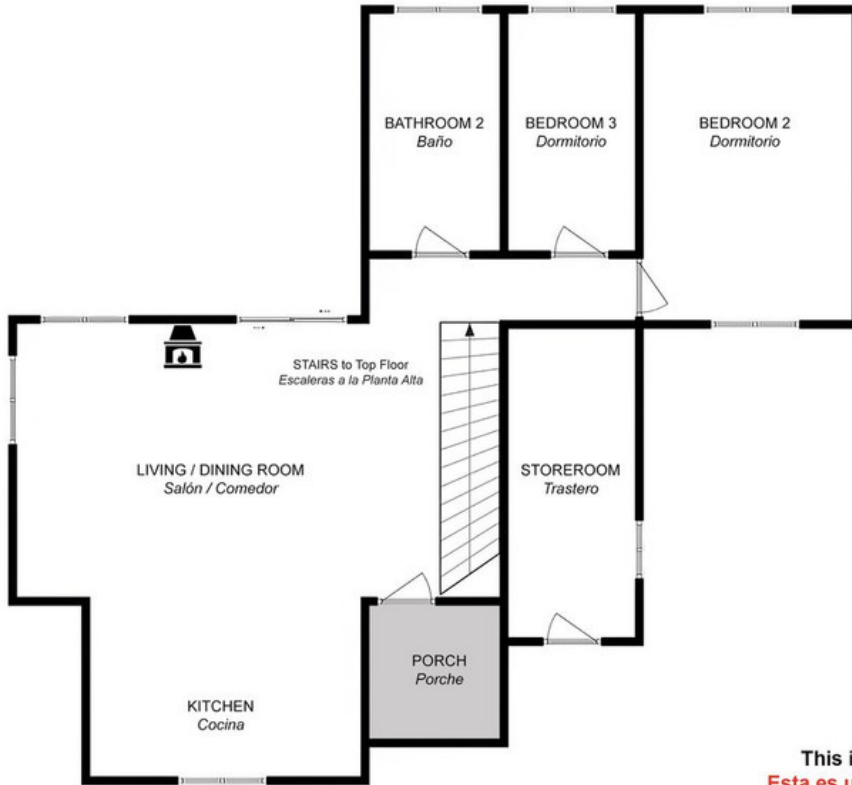




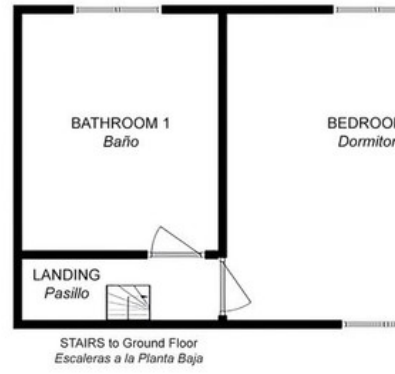




**GROUND FLOOR**  
*Planta Baja*



**TOP FLOOR**  
*Planta Alta*



This is a representation of the layout of the property and it is not  
*Esta es una representación de la distribución de la propiedad y no es*