

Ref.-ID: MIBGR5360593

Estepona

Апартамент

Коммунальные: 1,200 EUR / год



2



2



74 m2

This 2 Bedroom, 2 Bathroom, 3rd Floor South Orientation Apartment is a box ticker. Right in the heart of Estepona, close to La Lobilla School and Sports Centre. Modern, Clean, Fresh, in total working order, and with the Andalusia Tourist License fully registered. In fact we have to work our access around the multiple bookings in the coming season. The community offers a large communal pool, as well as outdoor gym, and kids' playground. All with affordable community fees under 100/month. The property comes with an underground parking space as well as storage room. (Furniture Included). You may see others on the market there, but they don't have the orientation & the light due to this property being on a higher floor (being just under a penthouse), and don't have a tourist license. What's more, for modern in this location you don't have to wait and you pay less in taxes.

Расположение

- ✓ Город
- ✓ Рядом с магазинами
- ✓ Рядом с морем
- ✓ Близко к школам
- ✓ Рядом с портом
- ✓ Урбанизация

Особенности

- ✓ Лифт
- ✓ Встроенные шкафы
- ✓ Рядом с транспортом
- ✓ Кладовка
- ✓ Ванная комната

меры безопасности

- ✓ Огражденный комплекс
- ✓ Домофон

ОРИЕНТАЦИЯ

- ✓ Юг

Мебель

- ✓ Полностью меблированный

Парковка

- ✓ Подземная

бассейн

- ✓ Общий

Кухня

- ✓ Полностью оборудованная

Коммунальные услуги

- ✓ Электричество
- ✓ Питьевая вода

ВИД

- ✓ Бассейн

Сад

- ✓ Общественный

Категория

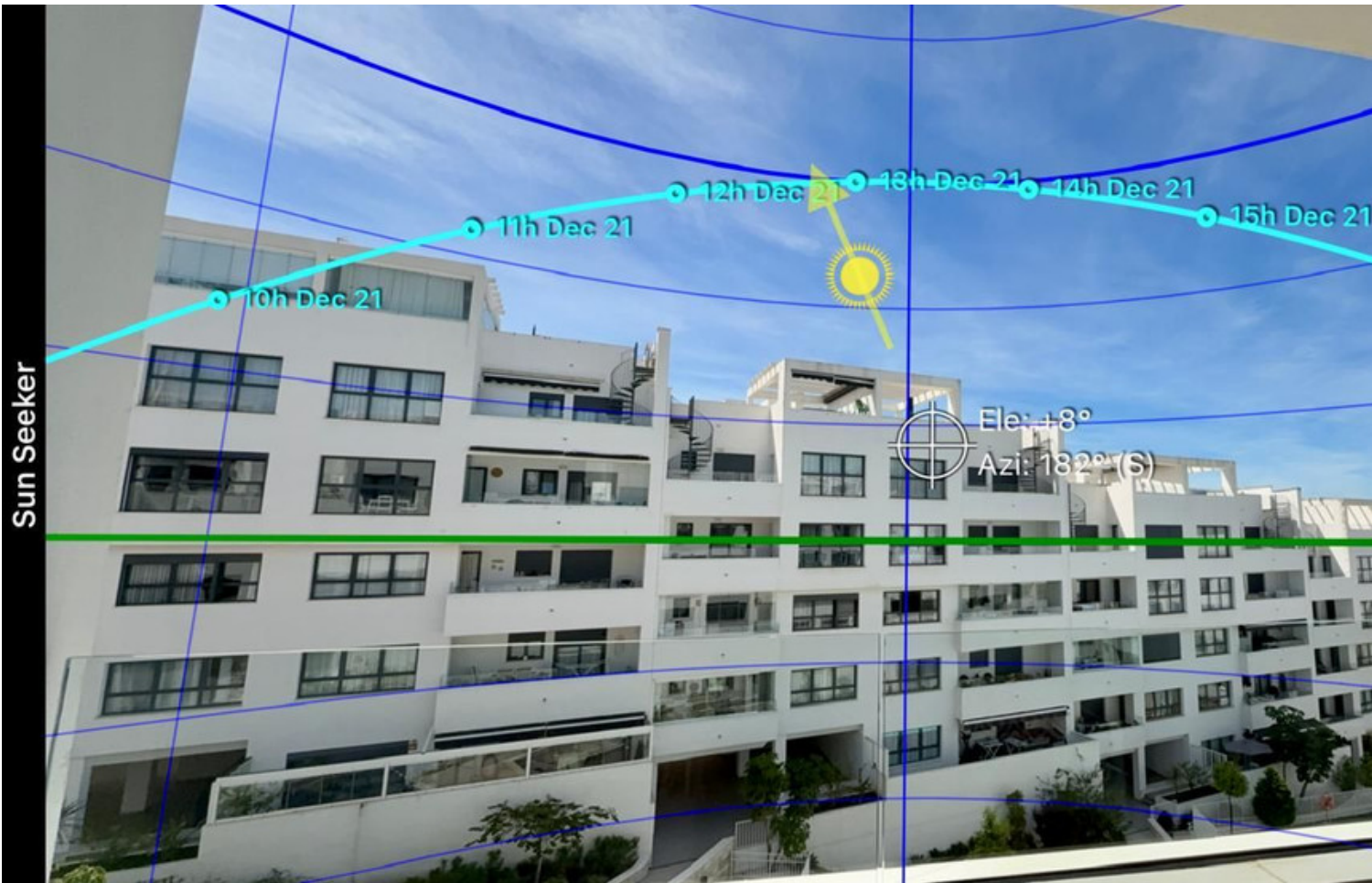
- ✓ Дома для отдыха
- ✓ Перепродажа

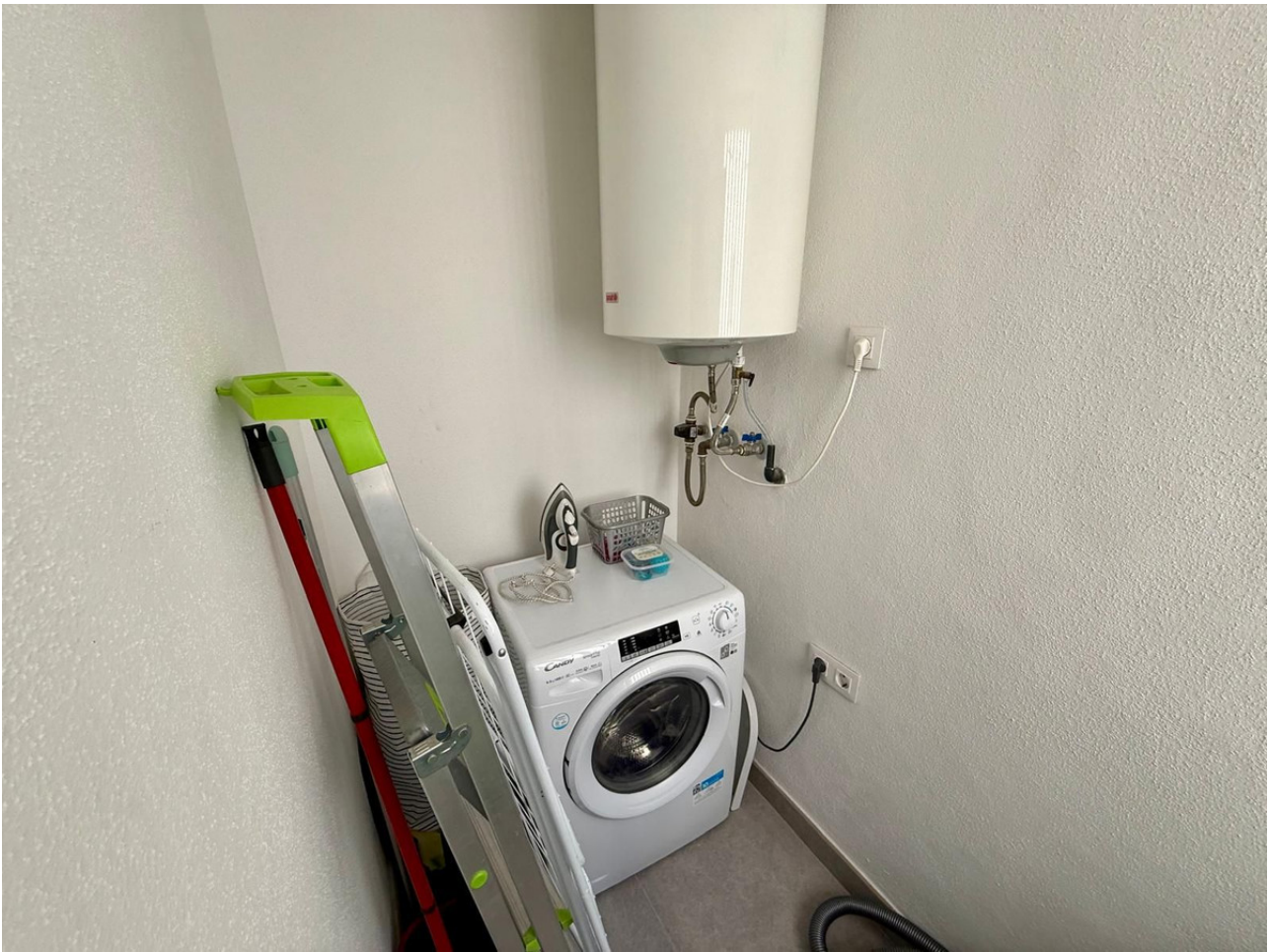










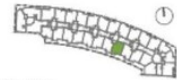




Confidencial

C/ DÁMASO ALONSO
Estepona, Málaga

BLOQUE 5
Planta Tercera. Vivienda A



SUPERFICIES	m ²
ÚTIL CERRADA	83.94
ÚTIL EXTERIOR	8.85
ÚTIL TOTAL	70.17
(v/Decreto 218/2005)	
CONSTRUIDA CERRADA	77.73
CONSTRUIDA EXTERIOR	11.26
(Lavadero + Terraza)	
CONSTRUIDA + Z.C.	107.09
CONSTRUIDA + Z.C.	98.24
(v/Decreto 218/2005)	

Escala Gráfica: Escala 1/75

GESTIONA
AQ
ACENTOR

PROMUEVE
HIGHLINE RESIDENCES
SIERRA DE ESTEPOÑA, S.L.U.

Las superficies reflejadas en el plano son aproximativas. Para obtener información detallada sobre las superficies y utilidades, consulte el proyecto de obra. Toda la información contenida en este documento es confidencial y no debe ser divulgada sin el consentimiento expreso de la empresa. Toda la información contenida en este documento es confidencial y no debe ser divulgada sin el consentimiento expreso de la empresa. Toda la información contenida en este documento es confidencial y no debe ser divulgada sin el consentimiento expreso de la empresa.