

Ref.-ID: MIBGR5361643

Torrequebrada

Апартамент

Коммунальные: 1,392 EUR /  
год

ИБИ: 1,310 EUR / год

Мусор: 172 EUR / год



3



3



136 m<sup>2</sup>

Everything new, including kitchen, bathrooms, wooden floor in the bedrooms, windows with electric persiana-shutters, etc. Luxury Duplex Penthouse for Sale in Torrequebrada, Benalmádena - Sea Views, 3 Terraces & Resort-Style Amenities Discover this exceptional duplex penthouse for sale in Torrequebrada, Benalmádena, perfectly designed for modern family living on the Costa del Sol. Located just 600 meters from the beach and close to top international schools, this home combines lifestyle, comfort and prime location. Set within a sought-after residential community, this property offers resort-style amenities, including a swimming pool, gym, (sauna), and paddle tennis court - ideal for a healthy Mediterranean lifestyle. ASK THE AGENT FOR THE 3D VIRTUAL TOUR Key Features: 3 spacious bedrooms 2 bathrooms + guest toilet + laundry room 3 private terraces with open views Open-plan kitchen, living & dining area 2 underground parking spaces Private storage room West-facing orientation with stunning sunsets Interior & Layout The property is thoughtfully distributed across two levels: Main Level: Welcoming entrance leading into a bright open-plan living, dining, and kitchen area, designed for effortless everyday living. From here, you access two terraces - perfect for outdoor dining and relaxing. A guest toilet and laundry room complete this level. Upper Level: Three well-appointed bedrooms: Master bedroom with en-suite bathroom and fitted wardrobes. Second bedroom with built-in double-wide bunk beds and wardrobe - ideal for children or guests - with access to the terrace. Third bedroom with fitted wardrobe and access to the terrace. Shared spacious bathroom for bedrooms two and three. Lifestyle & Views This home is all about light, space and tranquility. Enjoy panoramic views of the Mediterranean Sea and surrounding mountains, with spectacular sunsets from your private terraces. Prime Location in Torrequebrada 200 m to restaurants 600 m to the beach and Yucas Café & Bar 500 m to Mercadona, pharmacy & services 1 km to Trocadero Benalmádena 2.8 km to Torrequebrada Golf Club This area is highly sought-after for its proximity to international schools, golf courses, beaches and amenities, making it ideal as a family home, holiday residence, or investment property. The penthouse has been completely renovated in 2025, everything is new, including windows, doors, floors, wardrobes, bathrooms, kitchen, etc. The building is from 2005. The community has made a decision to paint the building and it'll be done soon. If you're searching for a luxury penthouse in Benalmádena with sea views, outdoor living, and premium community facilities - this is the one.

**Расположение**

- ✓ Рядом с гольф-полем
- ✓ Рядом с магазинами
- ✓ Рядом с морем
- ✓ Близко к школам

**Климат-контроль**

- ✓ Кондиционер
- ✓ Кондиционер холодного воздуха
- ✓ Кондиционер горячего воздуха
- ✓ Центральное отопление

**Кухня**

- ✓ Полностью оборудованная

**Коммунальные услуги**

- ✓ Электричество
- ✓ Питьевая вода

**ОРИЕНТАЦИЯ**

- ✓ Юго-запад
- ✓ Запад

**ВИД**

- ✓ Море
- ✓ Панорамный
- ✓ Город

**Сад**

- ✓ Общественный

**Категория**

- ✓ Дома для отдыха
- ✓ Инвестиции
- ✓ Элитная
- ✓ Перепродажа
- ✓ Современного

**Состояние**

- ✓ Отличное
- ✓ Недавно отремонтированная
- ✓ Недавно отделанная

**Особенности**

- ✓ Крытая терраса
- ✓ Лифт
- ✓ Встроенные шкафы
- ✓ Приватная терраса
- ✓ WiFi
- ✓ Тренажерный зал
- ✓ Падл теннис
- ✓ Кладовка
- ✓ Подсобное помещение
- ✓ Ванная комната
- ✓ Двойные стеклопакеты
- ✓ Оптическое волокно

**меры безопасности**

- ✓ Огражденный комплекс
- ✓ Электрические жалюзи
- ✓ Домофон

**бассейн**

- ✓ Общий
- ✓ Детский бассейн

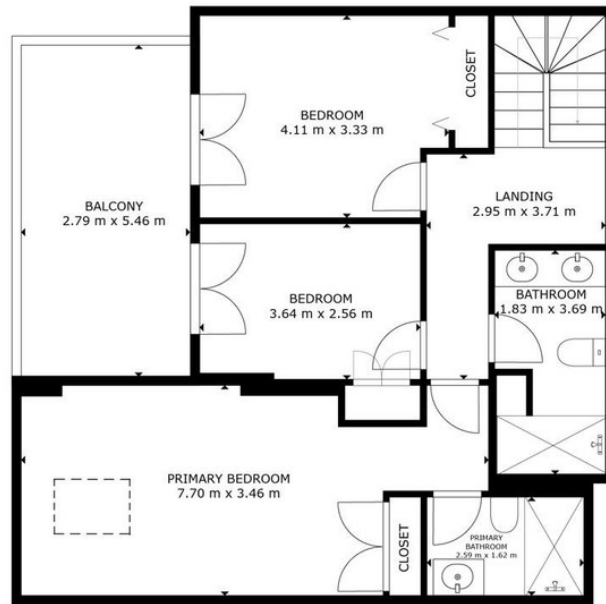
**Мебель**

- ✓ По желанию

**Парковка**


- ✓ Подземная
- ✓ Гараж
- ✓ С навесом
- ✓ Более чем один
- ✓ Общая
- ✓ Приватная

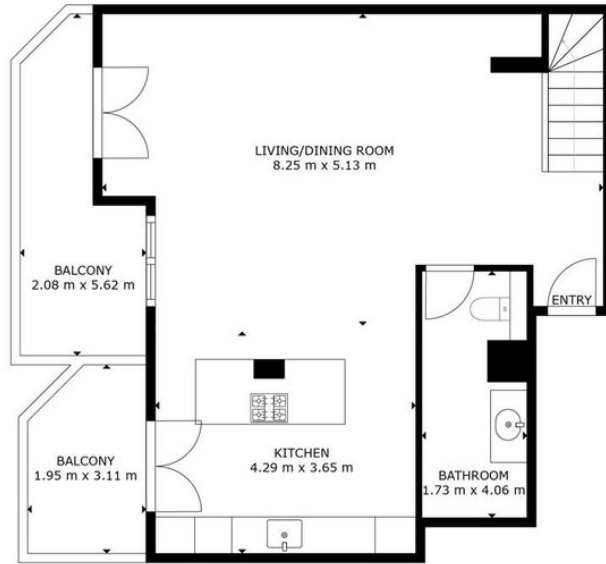




FLOOR 2

GROSS INTERNAL AREA  
 FLOOR 1: 62 m<sup>2</sup>, FLOOR 2: 73 m<sup>2</sup>  
 TOTAL: 135 m<sup>2</sup>  
 EXCLUDED AREA: BALCONY: 28 m<sup>2</sup>  
 SIZES AND DIMENSIONS ARE APPROXIMATE. ACTUAL MAY VARY.

Imago  
 Matterport®



FLOOR 1

GROSS INTERNAL AREA  
 FLOOR 1: 62 m<sup>2</sup>, FLOOR 2: 73 m<sup>2</sup>  
 TOTAL: 135 m<sup>2</sup>  
 EXCLUDED AREA: BALCONY: 28 m<sup>2</sup>  
 SIZES AND DIMENSIONS ARE APPROXIMATE, ACTUAL MAY VARY.

