

Ref.-ID: MIBGR5379574

Benahavís

Дом

Коммунальные: 7,800 EUR / год

ИБИ: 1,380 EUR / год

Мусор: 18 EUR / год



4



4.5



492 m2



538 m2

Nestled in an exclusive urbanization with 24-hour security, this magnificent villa offers a life of luxury and comfort in a privileged setting. Distributed over four floors, every corner of this property has been designed to maximize comfort and sea views. On the main floor, you'll find a modern open kitchen seamlessly integrated with the living-dining area, creating an ideal space for family gatherings and entertaining friends. This floor also includes a convenient guest restroom. The first floor features 3 en-suite bedrooms, each thoughtfully designed to ensure privacy and comfort. On the lower floor, there is a beauty room with an en-suite bathroom, perfect for relaxing and pampering yourself in the comfort of your home, a music room, laundry room, and wine cellar, as well as a garage with space for 2 vehicles, offering both functionality and style. The rooftop is a true oasis, complete with an outdoor kitchen and pergola, perfect for savoring the stunning sea views and creating unforgettable outdoor moments. The villa is equipped with an elevator, heated pool, and central air conditioning for both hot and cold, as well as underfloor heating on the main living floor and upstairs bathrooms, ensuring a luxurious and comfortable living experience year-round. Don't miss the opportunity to live in this exceptional villa in Benahavís Pueblo, where lifestyle meets nature and tranquility!

Расположение

- ✓ Рядом с магазинами
- ✓ Рядом с городом
- ✓ Близко к школам

Климат-контроль

- ✓ Кондиционер
- ✓ Камин
- ✓ Полы с подогревом
- ✓ Полы с подогревом в ванной

Кухня

- ✓ Частично оборудованная

Категория

- ✓ Элитная

ОРИЕНТАЦИЯ

- ✓ Юго-восток

ВИД

- ✓ Море
- ✓ Горы
- ✓ Сельская местность
- ✓ Панорамный
- ✓ Бассейн

Сад

- ✓ Приватный

Состояние

- ✓ Недавно отремонтированная

Особенности

- ✓ Крытая терраса
- ✓ Лифт
- ✓ Встроенные шкафы
- ✓ Приватная терраса
- ✓ Ванная комната
- ✓ Мраморные полы
- ✓ Двойные стеклопакеты

меры безопасности

- ✓ Огражденный комплекс
- ✓ Охрана 24 часа

бассейн

- ✓ Приватный
- ✓ С подогревом

Мебель

- ✓ Без мебели

Парковка

- ✓ Более чем один
- ✓ Приватная



























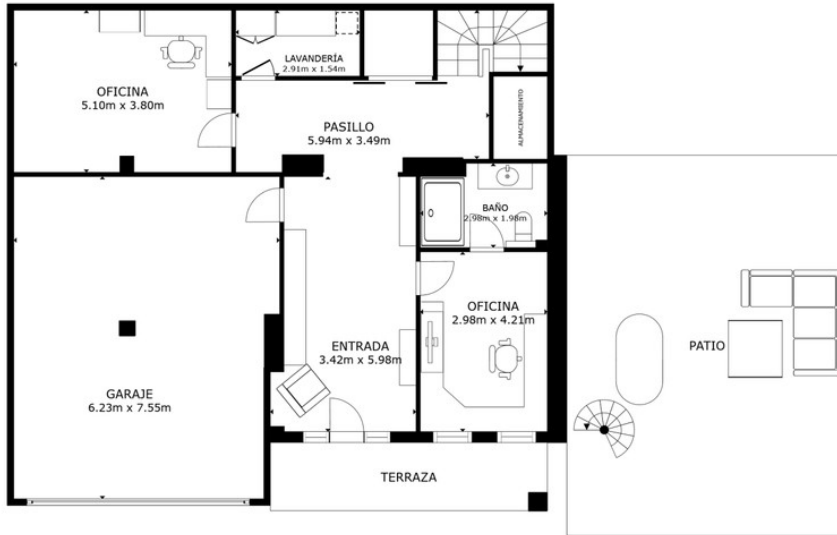








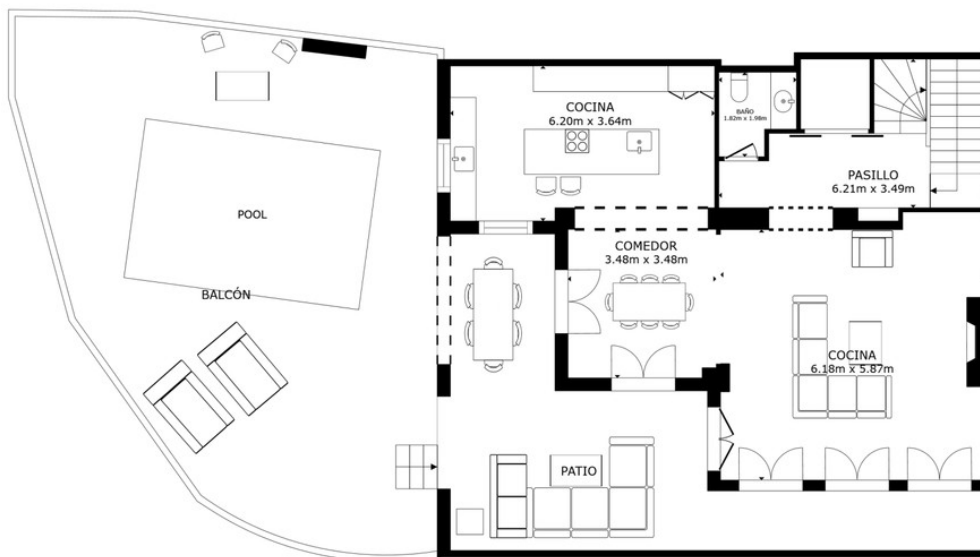




PLANTA 1

ÁREA INTERNA BRUTA
 PLANTA 1 87.0 m² PLANTA 2 96.5 m² PLANTA 3 100.8 m² PLANTA 4 8.2 m²
 ÁREAS EXCLUIDAS : GARAJE 45.9 m² TERRAZA 10.4 m² PATIO 58.7 m² PATIO 40.7 m²
 BALCÓN 98.1 m² BALCÓN 3.0 m² BALCÓN 3.0 m² BALCÓN 42.5 m²
 TOTAL : 292.5 m²

LOS TAMAÑOS Y LAS DIMENSIONES SON APROXIMADAS Y PUEDEN VARIAR EN ALGUNOS CASOS.

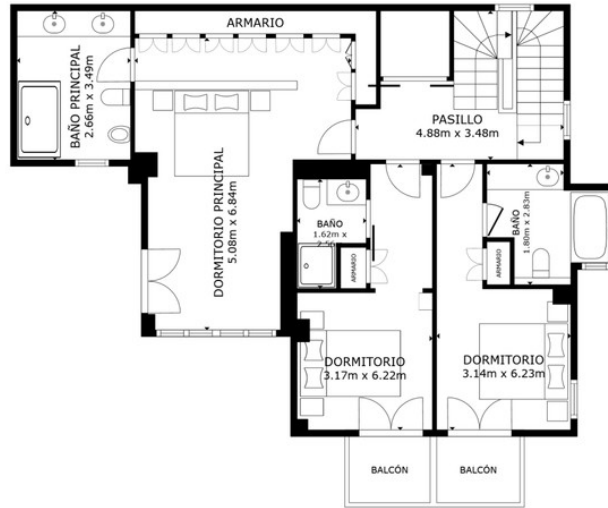


PLANTA 2

ÁREA INTERNA BRUTA
 PLANTA 1 87.0 m² PLANTA 2 96.5 m² PLANTA 3 100.8 m² PLANTA 4 8.2 m²
 ÁREAS EXCLUIDAS : GARAJE 45.9 m² TERRAZA 10.4 m² PATIO 58.7 m² PATIO 40.7 m²
 BALCÓN 98.1 m² BALCÓN 3.0 m² BALCÓN 3.0 m² BALCÓN 42.5 m²
 TOTAL : 292.5 m²

LOS TAMAÑOS Y LAS DIMENSIONES SON APROXIMADAS Y PUEDEN VARIAR EN ALGUNOS CASOS.

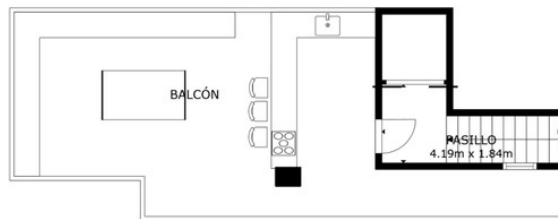




PLANTA 3

ÁREA INTERNA BRUTA
 PLANTA 1 87.0 m² PLANTA 2 96.5 m² PLANTA 3 100.8 m² PLANTA 4 8.2 m²
 ÁREAS EXCLUIDAS : GARAJE 45.9 m² TERRAZA 10.4 m² PATIO 58.7 m² PATIO 40.7 m²
 BALCÓN 98.1 m² BALCÓN 3.0 m² BALCÓN 3.0 m² BALCÓN 42.5 m²
 TOTAL : 292.5 m²

LOS TAMAÑOS Y LAS DIMENSIONES SON APROXIMADAS Y PUEDEN VARIAR EN ALGUNOS CASOS.



PLANTA 4

ÁREA INTERNA BRUTA
 PLANTA 1 87.0 m² PLANTA 2 96.5 m² PLANTA 3 100.8 m² PLANTA 4 8.2 m²
 ÁREAS EXCLUIDAS : GARAJE 45.9 m² TERRAZA 10.4 m² PATIO 58.7 m² PATIO 40.7 m²
 BALCÓN 98.1 m² BALCÓN 3.0 m² BALCÓN 3.0 m² BALCÓN 42.5 m²
 TOTAL : 292.5 m²

LOS TAMAÑOS Y LAS DIMENSIONES SON APROXIMADAS Y PUEDEN VARIAR EN ALGUNOS CASOS.

