

Ref.-ID: MIBGR5382334

El Chaparral

Дом



4



4



159 m2



457 m2

Are you dreaming of a home where sleek design, tranquility, and luxury come together in perfect harmony? This stunning townhouse is part of an exclusive new development in El Chaparral, scheduled for completion in Q1 2027. Located in the heart of Mijas Golf Valley, just minutes from the beach and with the golf club right around the corner, this is a unique opportunity to secure a modern home before the project is completed. Here, architecture and nature meet in perfect harmony. Large panoramic windows let in the light and open up to a fantastic view of the Mediterranean, while the elegant living spaces create a warm and inviting atmosphere. Every detail is carefully considered, from material choices to layout, resulting in a home that is both highly functional and aesthetically superior. The townhouse offers four spacious bedrooms and stylish bathrooms with underfloor heating, collectively creating an oasis of comfort and well-being. The open kitchen and living room form the natural gathering point of the home, where design and quality go hand in hand. Outdoor living is equally impressive. The large terrace and private garden invite relaxation, al fresco dining, and long, sunny days. There is the possibility to add a private pool and create your very own sanctuary. As an owner, you will have access to exclusive resort-style communal facilities: swimming pools with panoramic views, a fitness center, sauna, Turkish bath, social areas, and coworking facilities - all designed to add a touch of luxury to everyday life. You are surrounded by nature, golf, and some of the most beautiful beaches on the Costa del Sol. Please note: The images are from a show home. The layout is identical. The private pool shown is not included but can be added as an optional upgrade. The development is scheduled for completion in Q1 2027. Ideal Location: 25 minutes from Malaga Airport 10 minutes from Fuengirola Station 40 minutes from Malaga city centre 23 minutes from Marbella 30 minutes from Puerto Banús Contact us for more information and to secure your place in this exclusive development.

Расположение

- ✓ Первая линия гольфа
- ✓ На побережье
- ✓ Рядом с гольф-полем
- ✓ Рядом с магазинами
- ✓ Рядом с морем
- ✓ Рядом с городом

Климат-контроль

- ✓ Кондиционер
- ✓ Центральное отопление
- ✓ Полы с подогревом в ванной

Сад

- ✓ Приватный

ОРИЕНТАЦИЯ

- ✓ Юго-восток

ВИД

- ✓ Море
- ✓ Горы
- ✓ Гольф
- ✓ Панорамный
- ✓ Сад
- ✓ Бассейн
- ✓ Город

меры безопасности

- ✓ Огражденный комплекс
- ✓ Электрические жалюзи
- ✓ Сигнализация
- ✓ Охрана 24 часа

Состояние

- ✓ Отличное

Особенности

- ✓ Крытая терраса
- ✓ Встроенные шкафы
- ✓ Приватная терраса
- ✓ WiFi
- ✓ Тренажерный зал
- ✓ Мраморные полы
- ✓ Двойные стеклопакеты
- ✓ Подвал
- ✓ Оптическое волокно

Парковка

- ✓ Более чем один
- ✓ Приватная

бассейн

- ✓ Общий

Мебель

- ✓ Без мебели

Категория

- ✓ Гольф
- ✓ Элитная





















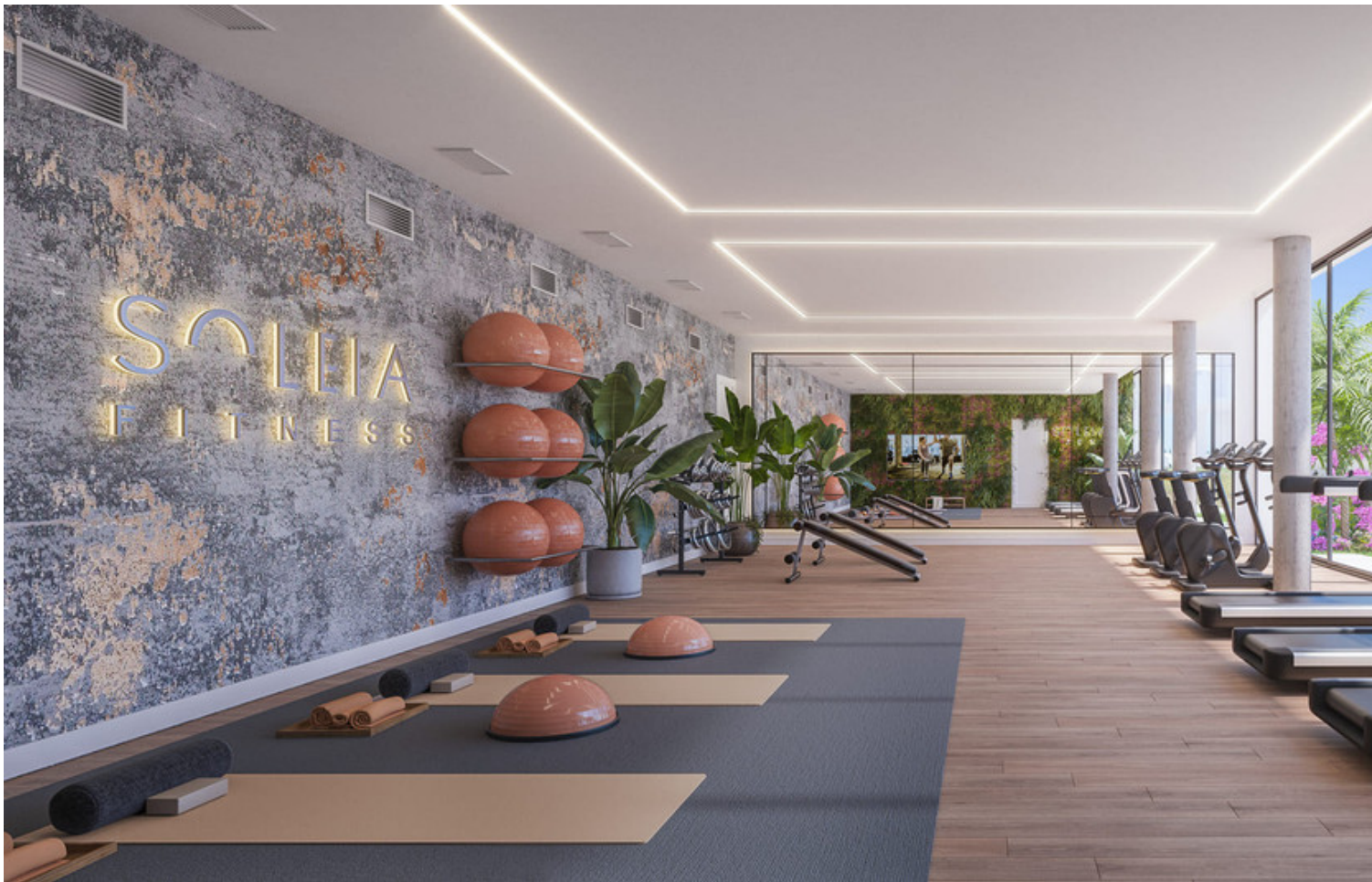












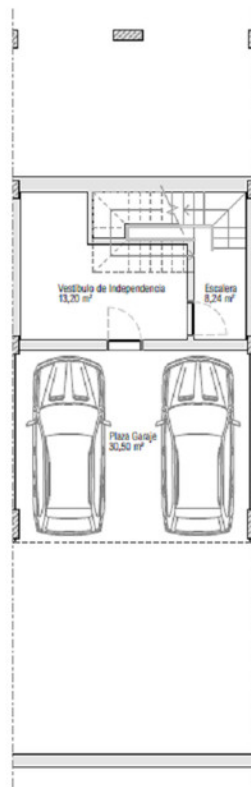
SOLEIA LIVING El Chaparral
MÚJAS (MÁLAGA)

VIVIENDA 03

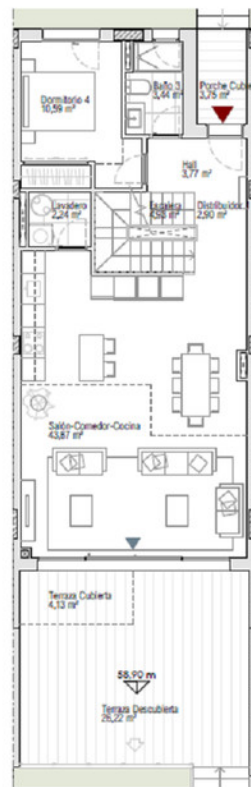
TIPO A3
4 DORMITORIOS

SUPERFICIES

Parcela Privativa	175,36 m ²
Jardín	54,01 m ²
Superficie Construida Vivienda	158,31 m ²
Superficie Construida Sótano	58,94 m ²
Superficie Construida Terrazas	42,03 m ²
Construida Total	259,28 m²
Superficies BOJA	
Superficie BOJA Útil	145,53 m ²
Superficie BOJA Construida	174,14 m ²



PLANITA SÓTANO



PLANITA BAJA



PLANITA ALTA



SOLEIA LIVING El Chapparal
MIJAS (MÁLAGA)

VIVIENDA 04

TIPO A3
4 DORMITORIOS

SUPERFICIES

Parcela Privativa	174,28 m ²
Jardín	54,93 m ²
Superficie Construida Vivienda	158,31 m ²
Superficie Construida Sótano	38,94 m ²
Superficie Construida Terrazas	42,03 m ²
Construida Total	239,28 m²
Superficies BOJA	
Superficie BOJA Util	145,83 m ²
Superficie BOJA Construida	174,14 m ²

