



**Продажа - Дом - Estepona
732.000€**

**www.mibgroup.es
+34 661 89 71 88
info@mibgroup.es**



Spacious 4-Bedroom Family Townhouse with Private Patio & Flexible Basement – Zona Calvario, Estepona An ideal family home in a small, exclusive private urbanisation in Zona Calvario, Estepona. This charming semi-detached villa offers tranquillity and green surroundings while being just a short walk from the centre of Estepona. Key Features 250 m² built over 4 levels 4 bedrooms | 4 bathrooms Private patio with barbecue and outdoor dining area Two terraces with excellent orientation Fitted wardrobes Central heating + air conditioning Built in 2005 Private garage with 2 parking spaces Distribution Ground Floor: Bright living-dining room with double orientation and direct access to a terrace overlooking the park and a private patio with BBQ. Independent kitchen and guest toilet. First Floor: Two spacious bedrooms with fitted wardrobes and one bathroom. Master bedroom with en-suite bathroom and terrace with park views. Attic: Large fourth bedroom with its own en-suite bathroom and private terrace — ideal for guests or teenagers seeking privacy and independence. Basement: Versatile multi-purpose space (perfect as a gym, office, workshop or children’s playroom) with direct access from the garage. Location Situated in a quiet, green and secure residential area, yet only a few minutes’ walk from Estepona town centre, parks, schools, nurseries and shops. An excellent combination of peace and convenience. A spacious, versatile and well-built family home with great potential in one of Estepona’s most pleasant residential areas. Viewing highly recommended.

Расположение

- ✓ Город
- ✓ Коммерческая зона
- ✓ Рядом с магазинами
- ✓ Рядом с морем
- ✓ Близко к школам
- ✓ Рядом с портом
- ✓ Урбанизация

ВИД

- ✓ Панорамный
- ✓ Сад
- ✓ Двор
- ✓ Город
- ✓ Улица

Сад

- ✓ Общественный

ОРИЕНТАЦИЯ

- ✓ Восток
- ✓ Запад

Особенности

- ✓ Крытая терраса
- ✓ Встроенные шкафы
- ✓ Рядом с транспортом
- ✓ Приватная терраса
- ✓ Солярий
- ✓ WiFi
- ✓ Кладовка
- ✓ Подсобное помещение
- ✓ Ванная комната
- ✓ Мраморные полы
- ✓ Барбекю
- ✓ Двойные стеклопакеты
- ✓ Возле церкви
- ✓ Оптическое волокно

меры безопасности

- ✓ Огражденный комплекс
- ✓ Сигнализация

Состояние

- ✓ Отличное

Мебель

- ✓ Полностью меблированный

Парковка

- ✓ Подземная
- ✓ Гараж
- ✓ С навесом
- ✓ Более чем один
- ✓ Приватная

Климат-контроль

- ✓ Кондиционер
- ✓ Камин

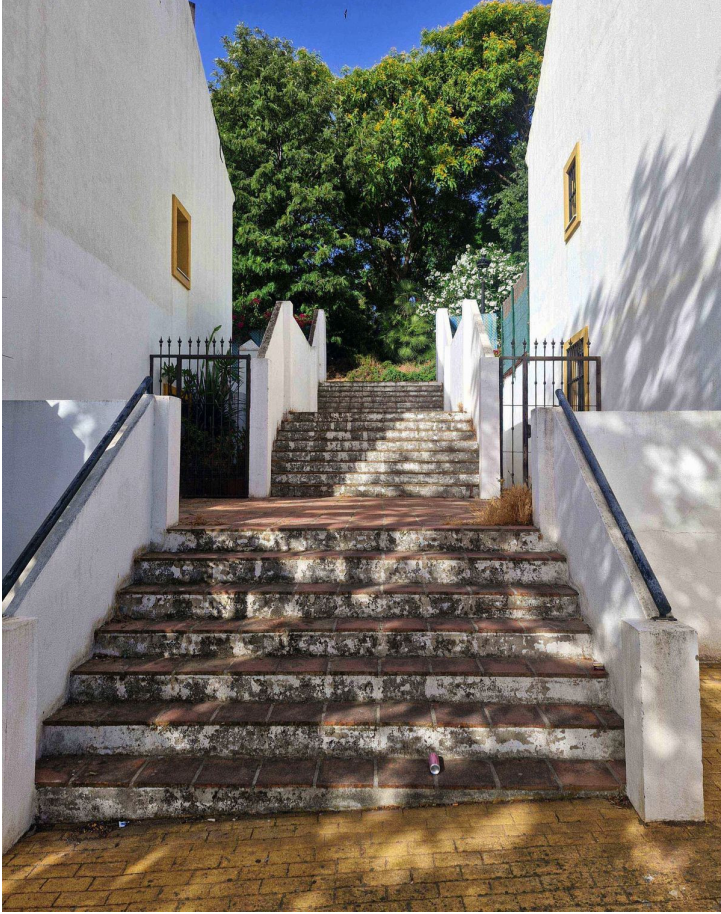
Кухня

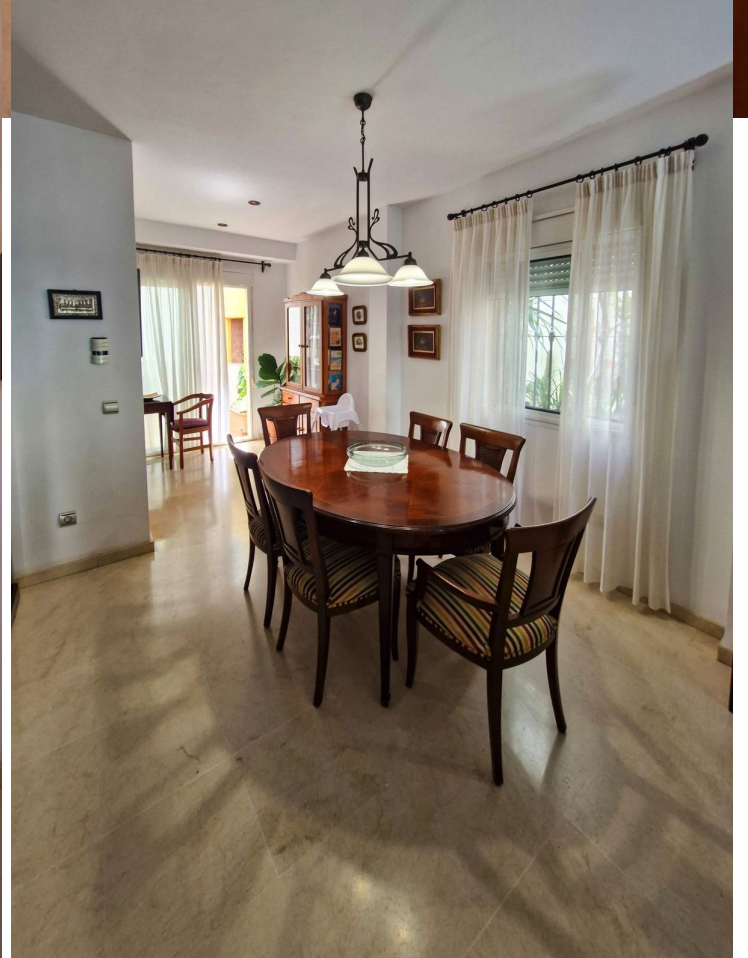
- ✓ Полностью оборудованная

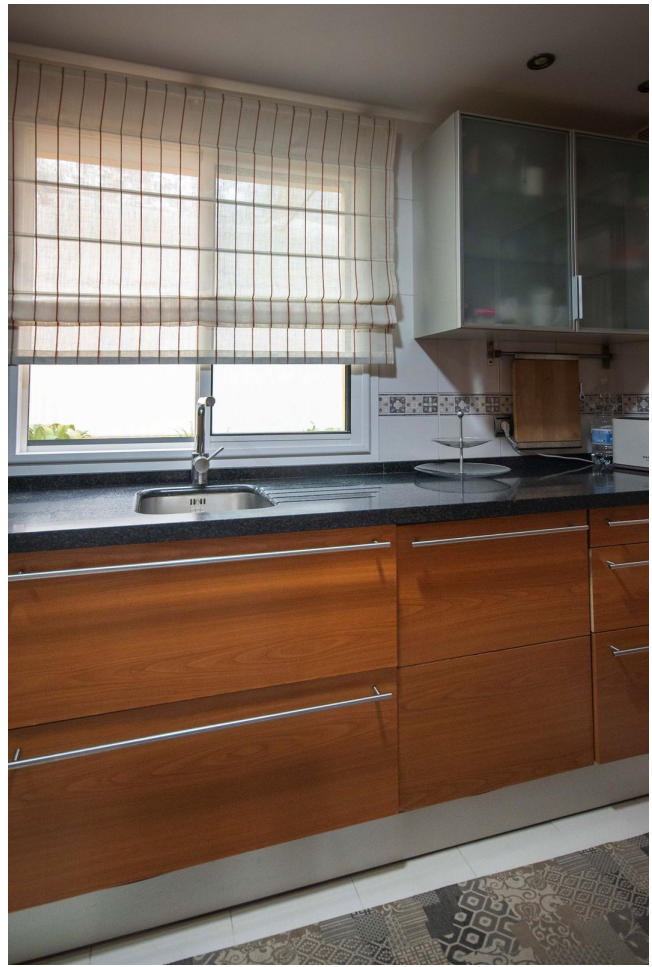






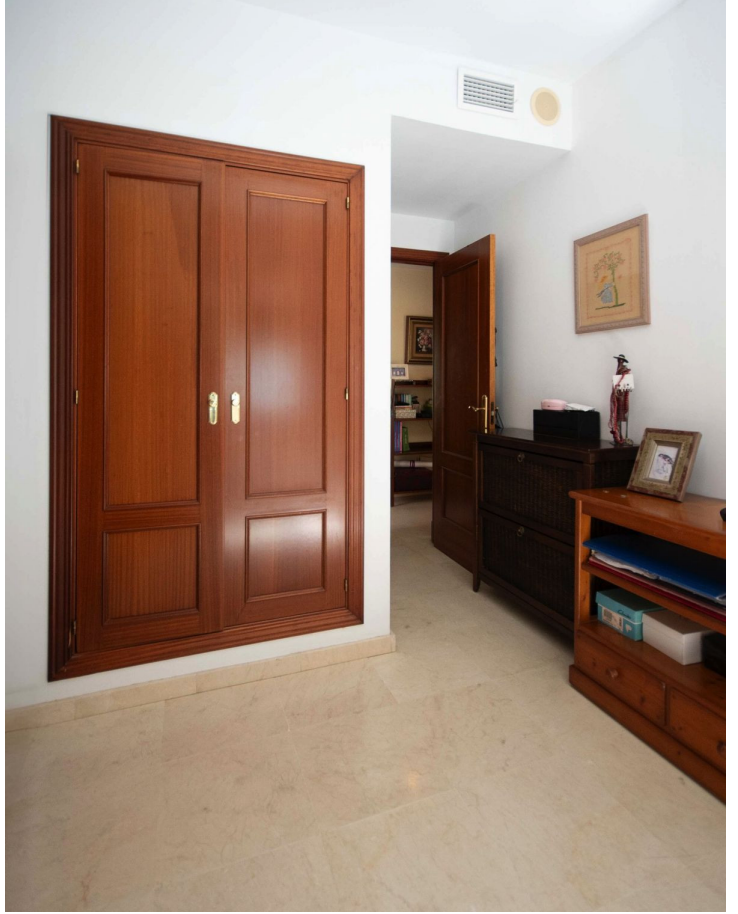










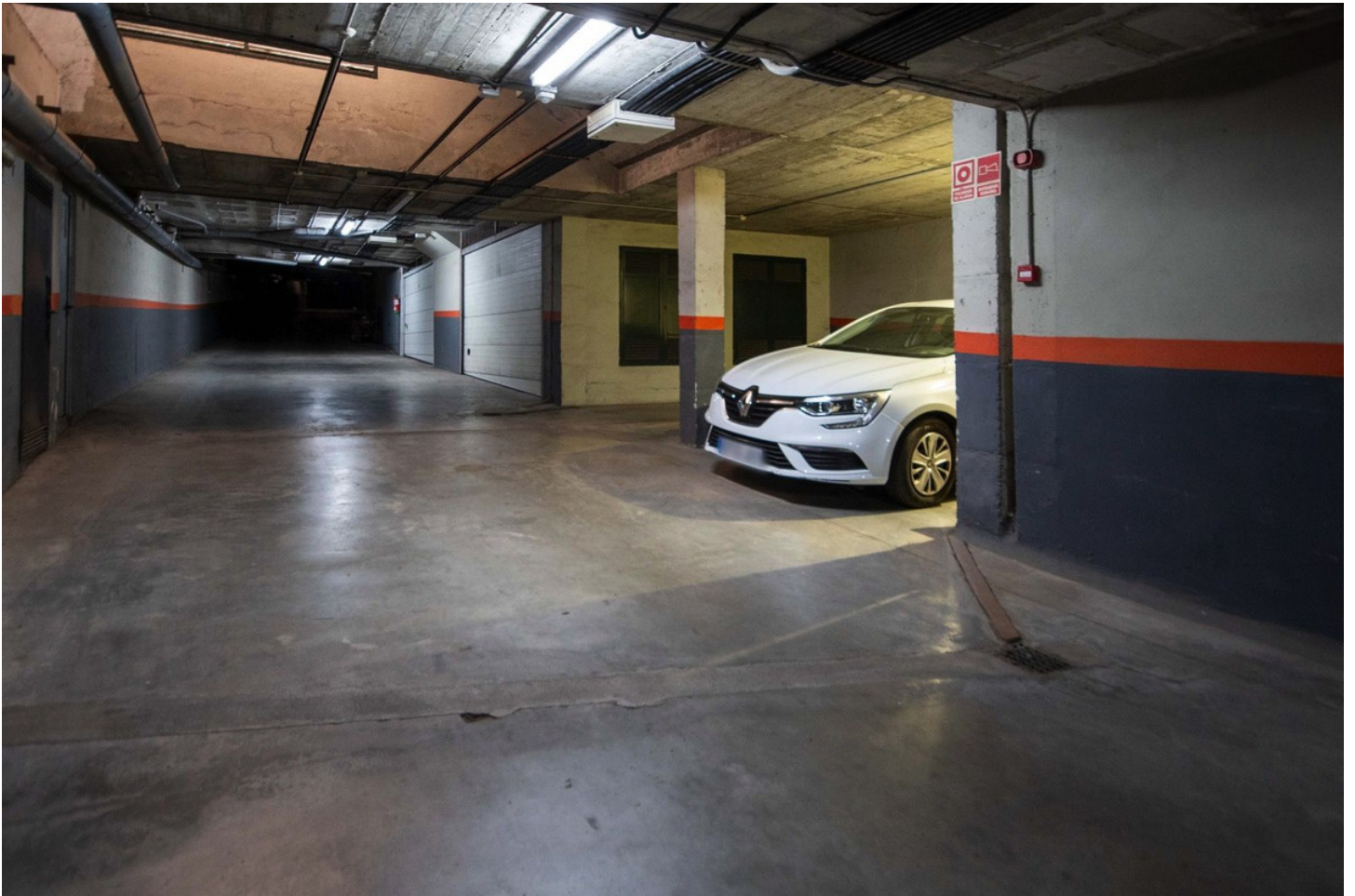




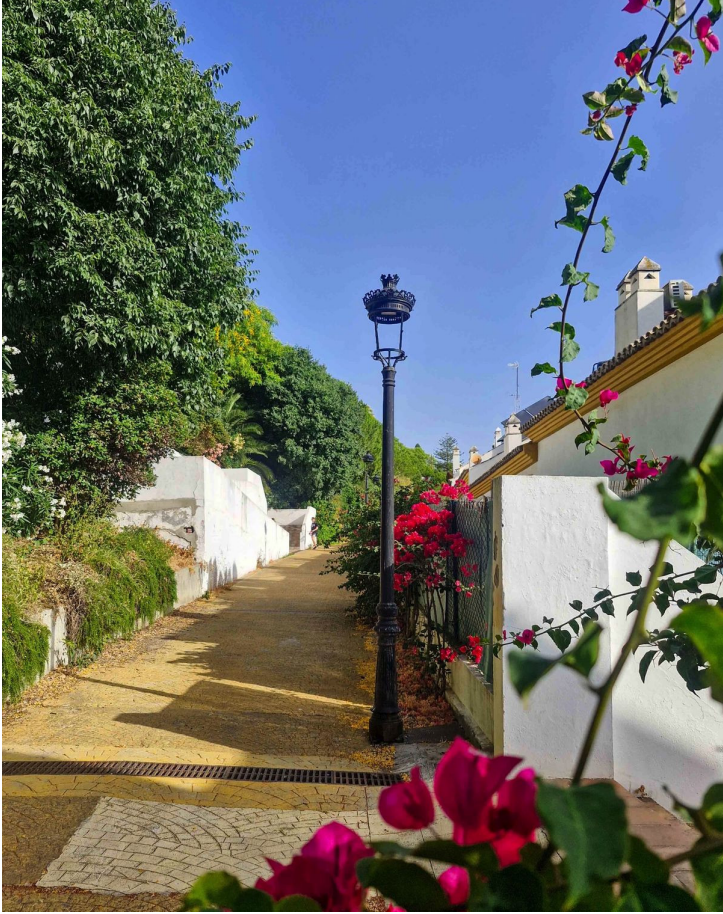








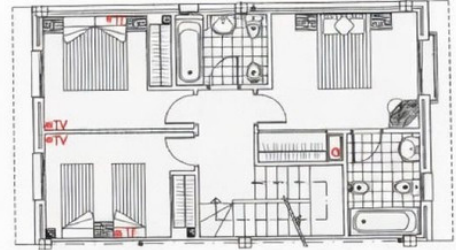








PLANTA GARAJE



PLANTA PRIMERA

TIRO DE CHIMENEA



PLANTA BAJA

6A



PLANTA SEGUNDA