

Ref.-ID: MIBGR5135941

Benahavís

Дом



4



4.5



410 m2



654 m2

Set within the exclusive Atalaya Fairways community of Benahavís, this stunning contemporary villa offers a rare combination of elegance, privacy, and breathtaking views. With 4 spacious bedrooms, all featuring luxurious en-suite bathrooms, plus an additional guest toilet, this home is designed to deliver the ultimate in comfort and style. Spanning 410 m<sup>2</sup> of interior space on a generous 654 m<sup>2</sup> plot, the property blends modern architecture with functional living, creating the perfect sanctuary for family life or holiday escapes. The interior comes fully furnished, showcasing a sleek, fully fitted kitchen, a bright dining room, and an inviting living area. Floor-to-ceiling glass doors flood the home with natural light while framing panoramic vistas of the sea, mountains, golf course, and surrounding greenery. Enjoy unobstructed views stretching across the coastline, a spectacular setting for entertaining or sunset cocktails. The villa's private outdoor spaces are equally impressive, featuring a pristine swimming pool, landscaped garden, and both covered and uncovered terraces for year-round enjoyment. Practical luxuries such as fitted wardrobes, a lift, and a private garage ensure a lifestyle of convenience and sophistication. Located in a boutique development of just 16 uniquely designed residences, Atalaya Fairways is a peaceful, low-density enclave surrounded by the lush fairways of Atalaya Golf Course. Its privileged position offers the perfect balance: tranquil natural surroundings yet only minutes from golden beaches, vibrant dining spots, world-class leisure facilities, and the highly regarded Atalaya International School, making it an ideal choice for families seeking quality education close to home. This property is in excellent condition, offering a move-in-ready opportunity to own a slice of contemporary luxury in one of the Costa del Sol's most sought-after addresses.

**Расположение**

- ✓ Рядом с гольф-полем
- ✓ Близко к школам

**Климат-контроль**

- ✓ Кондиционер
- ✓ Камин

**Сад**

- ✓ Приватный

**ОРИЕНТАЦИЯ**

- ✓ Юг

**ВИД**

- ✓ Море
- ✓ Сад
- ✓ Бассейн

**меры безопасности**

- ✓ Огражденный комплекс
- ✓ Домофон

**Состояние**

- ✓ Отличное

**Особенности**

- ✓ Крытая терраса
- ✓ Лифт
- ✓ Встроенные шкафы
- ✓ Приватная терраса
- ✓ WiFi
- ✓ Ванная комната
- ✓ Мраморные полы
- ✓ Умный дом
- ✓ Подвал
- ✓ Оптическое волокно

**Парковка**

- ✓ Более чем один
- ✓ Приватная

**бассейн**

- ✓ Приватный

**Мебель**

- ✓ Полностью меблированный



































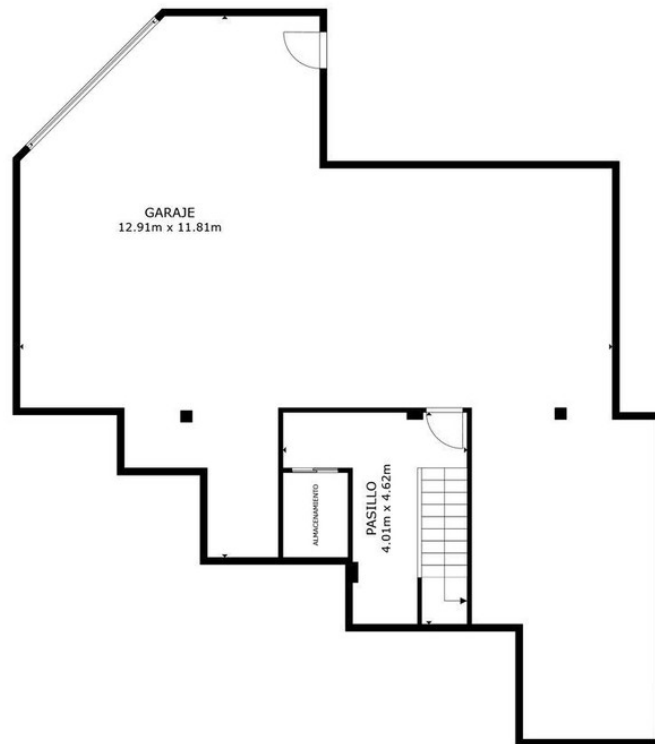
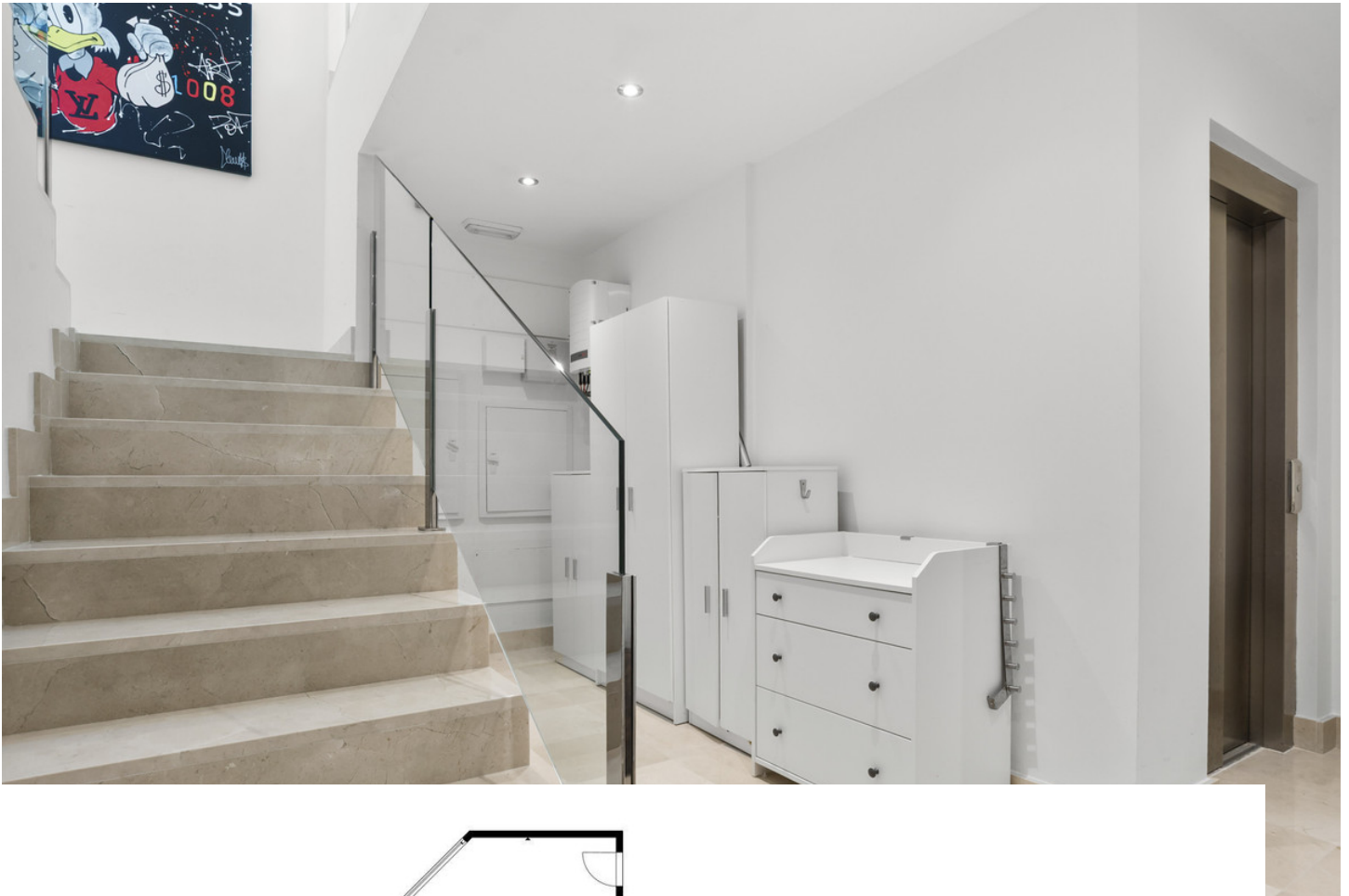






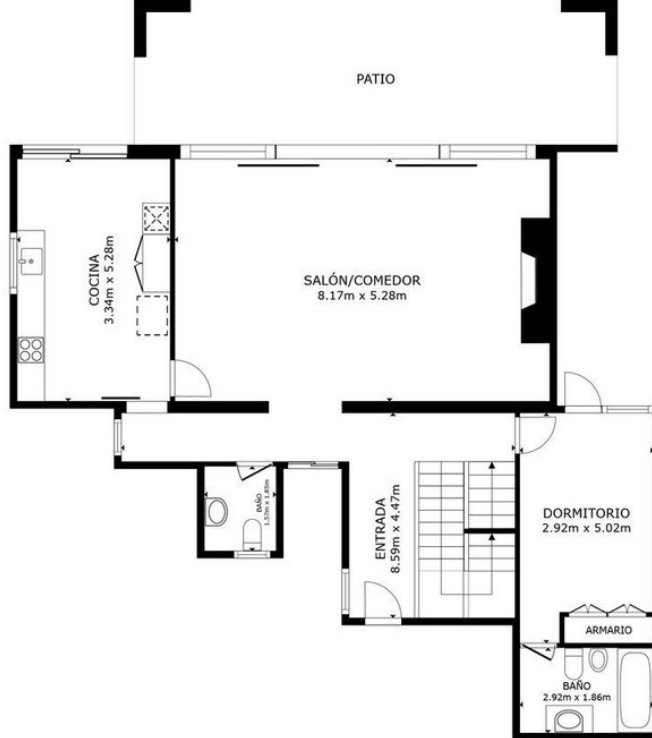






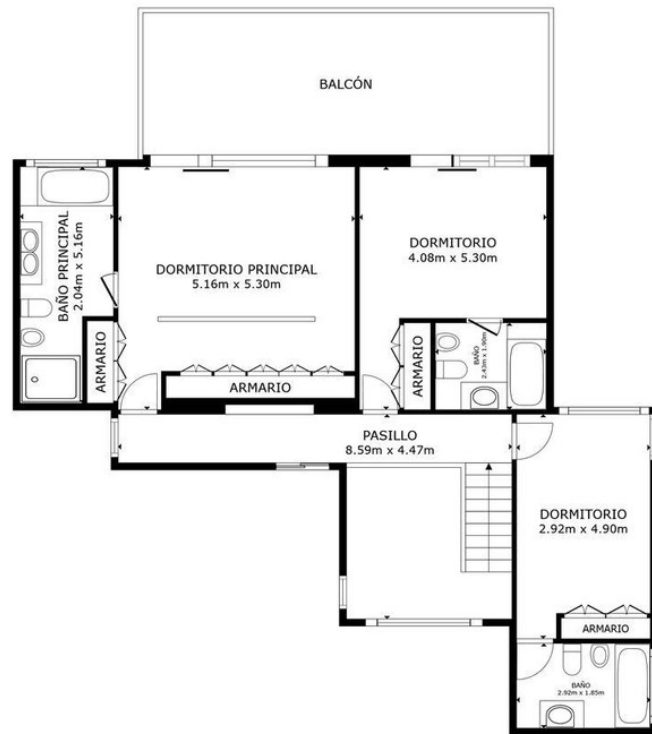
PLANTA 1

ÁREA INTERNA BRUTA  
 PLANTA 1 17.5 m<sup>2</sup> PLANTA 2 109.0 m<sup>2</sup> PLANTA 3 103.3 m<sup>2</sup>  
 ÁREAS EXCLUIDAS : GARAJE 117.7 m<sup>2</sup> PATIO 29.0 m<sup>2</sup> BALCÓN 27.5 m<sup>2</sup>  
 TOTAL : 229.9 m<sup>2</sup>  
 LOS TAMAÑOS Y LAS DIMENSIONES SON APROXIMADAS Y PUEDEN VARIAR EN ALGUNOS CASOS.



PLANTA 2

ÁREA INTERNA BRUTA  
 PLANTA 1 17.5 m<sup>2</sup> PLANTA 2 109.0 m<sup>2</sup> PLANTA 3 103.3 m<sup>2</sup>  
 ÁREAS EXCLUIDAS : GARAJE 117.7 m<sup>2</sup> PATIO 29.0 m<sup>2</sup> BALCÓN 27.5 m<sup>2</sup>  
 TOTAL : 229.9 m<sup>2</sup>  
 LOS TAMAÑOS Y LAS DIMENSIONES SON APROXIMADAS Y PUEDEN VARIAR EN ALGUNOS CASOS.



PLANTA 3

ÁREA INTERNA BRUTA  
 PLANTA 1 17.5 m<sup>2</sup> PLANTA 2 109.0 m<sup>2</sup> PLANTA 3 103.3 m<sup>2</sup>  
 ÁREAS EXCLUIDAS : GARAJE 117.7 m<sup>2</sup> PATIO 29.0 m<sup>2</sup> BALCÓN 27.5 m<sup>2</sup>  
 TOTAL : 229.9 m<sup>2</sup>  
 LOS TAMAÑOS Y LAS DIMENSIONES SON APROXIMADAS Y PUEDEN VARIAR EN ALGUNOS CASOS.

